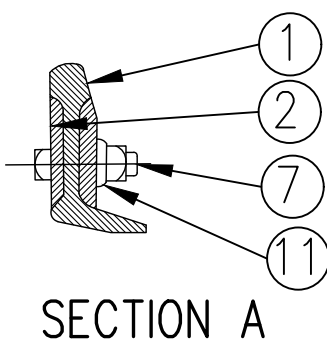
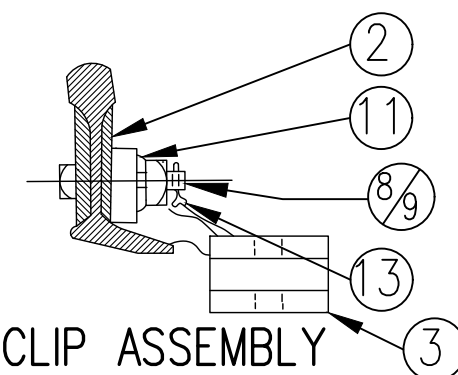


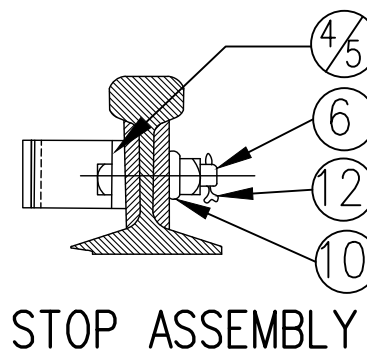
ASSEMBLY OF 22'-0" POINT RAIL
DRAWING NO. GTS-0332/B
LEFT HAND POINT RAIL



SECTION A



CLIP ASSEMBLY



STOP ASSEMBLY

ITEM NO.	DESCRIPTION	STANDARD PLAN NO.	MARK NO.	QUANTITY	
				DWG.NO.GTS-0332	
				A	B
1	RIGHT POINT RAIL	GTS-0429		1	-
	LEFT POINT RAIL			-	1
2	REINFORCING BAR 1/2" THK X 20'-0" LONG.	GTS-0342/K		2	2
3	SWITCH CLIP-RIGHT HAND	GTS-0338/5	338A-3	3	-
	SWITCH CLIP-LEFT HAND	GTS-0338/6	338B-3	-	3
4	STOP BLOCK*1	GTS-0339/K	K	1	1
5	STOP BLOCK*2	GTS-0339/L	L	1	1
6	3/4" DIA-10 UNC SQ.HD.BOLT X 4" LG.C/W SQ.NUT	GTS-1305/6		4	4
7	1" DIA-8 UNC SQ.HD.BOLT X 3-1/2" LG.C/W SQ.NUT	GTS-1309/13		20	20
8	1" DIA-8 UNC SQ.HD.BOLT X 4-1/4" LG.C/W SQ.NUT	GTS-1305/20		2	2
9	1" DIA-8 UNC SQ.HD.BOLT X 4-1/2" LG.C/W SQ.NUT	GTS-1305/21		4	4
10	SPRING WASHER FOR 3/4" DIA BOLT	GTS-1301		4	4
11	SPRING WASHER FOR 1" DIA BOLT	GTS-1301		26	26
12	3/16" COTTER PIN X 1-1/4" LONG			4	4
13	1/4" COTTER PIN X 2" LONG			6	6

NOTES

CONVERSION FACTOR: 1 INCH=25.4mm, 1 FOOT=304.8mm

WHEN REFERRING TO POINT RAILS, DRAWING NO. MUST BE STATED AS A OR B INDICATE RIGHT OR LEFT HAND POINT:



- A- RIGHT HAND POINT
- B- LEFT HAND POINT (ILLUSTRATED)

METRIC CONVERSION: 1 inch=25.4mm, 1 foot=304.8mm

1	18/07/27	ADDED IMPERIAL TO METRIC CONVERSION NOTE	
No.	Date	Revision	By Approved

Standard / **ASSEMBLY 22'-0" POINT RAIL 132LB. R.E. RAIL**

Drawn _____ Checked _____ Approved KBL
VP Engineering & Asset Management

Date DEC 15, 2017 Plan Number GTS-0332 Rev 1