

ASSEMBLY OF 39'-0" SAMSON POINT RAIL

POINT ASSEMBLY INCLUDES:

ITEM NO.	DESCRIPTION	STANDARD PLAN NO.	QUANTITY					
			DWG. No. GTS-0337					
			B	C	E	F	G	H
1	LEFT SAMSON CURVED POINT RAIL	R11C-673.1	1	-	-	-	-	-
	RIGHT SAMSON CURVED POINT RAIL	R11C-673.1	-	1	-	-	-	-
	RIGHT SAMSON STRAIGHT POINT RAIL	FS-108	-	-	1	-	-	-
	LEFT SAMSON STRAIGHT POINT RAIL	FS-108	-	-	-	1	-	-
	RIGHT SAMSON STRAIGHT POINT RAIL		-	-	-	-	1	-
	LEFT SAMSON STRAIGHT POINT RAIL		-	-	-	-	-	1
2	STOCK SIDE REINFORCING BAR 1/2" THK. x 37'-0" LONG	GTS-0342/L	1	1	1	1	1	1
3	GAUGE SIDE REINFORCING BAR 1-1/4" THK. x 37'-0" LONG	GTS-0342/U	1	1	1	1	1	1
4	STOP BLOCK	GTS-0339/N	1	1	-	-	1	1
	STOP BLOCK	GTS-0339/P	-	-	1	1	-	-
5	STOP BLOCK	GTS-0339/P	1	1	-	-	1	1
	STOP BLOCK	GTS-0339/M	-	-	1	1	-	-
6	STOP BLOCK	GTS-0339/M	1	1	-	-	1	1
	STOP BLOCK	GTS-0339/R	-	-	1	1	-	-
7	3/4" DIA-10 UNC SQ. HD. BOLT x 4-3/4" LG. C/W SQ. NUT	GTS-1305/9	6	6	6	6	6	6
8	1" DIA-8 UNC SQ. HD. BOLT (3/8" HD.) x 4-1/4" LG. C/W SQ. NUT	GTS-1309/25	8	8	8	8	8	8
9	1" DIA-8 UNC SQ. HD. BOLT x 4-1/4" LG. C/W SQ. NUT	GTS-1309/24	21	21	21	21	21	21
10	1" DIA-8 UNC SQ. HD. BOLT (3/8" HD.) x 4-1/4" LG. C/W SQ. NUT	GTS-1305/19	2	2	2	2	2	2
11	SPRING WASHER FOR 3/4" DIA. BOLT	GTS-1301	6	6	6	6	6	6
12	SPRING WASHER FOR 1" DIA. BOLT	GTS-1301	31	31	31	31	31	31
13	3/16" COTTER PIN X 1-1/4" LONG		6	6	6	6	6	6
14	1/4" COTTER PIN X 2" LONG		2	2	2	2	2	2

NOTES:

WHEN REFERRING TO POINT RAILS, DRAWING NUMBER MUST BE STATED AS B, C, E, F, G OR H TO INDICATE SPECIFIC POINT REQUIRED.

STOCK NUMBERS FOR POINT ASSEMBLIES USED ON:

NO. 20 EQUILATERAL TURNOUT (STRAIGHT SWITCH) GTS-0230 E/F
 GTS-0337 E RIGHT SAMSON STRAIGHT POINT RAIL
 GTS-0337 F LEFT SAMSON STRAIGHT POINT RAIL

NO. 20 TURNOUT (CURVED SWITCH) GTS-0231 A/D
 RIGHT HAND TURNOUT
 GTS-0337B LEFT SAMSON CURVED POINT RAIL
 GTS-0337G RIGHT SAMSON STRAIGHT POINT RAIL
 LEFT HAND TURNOUT
 GTS-0337C RIGHT SAMSON CURVED POINT RAIL
 GTS-0337H LEFT SAMSON STRAIGHT POINT RAIL

SWITCH CLIPS ARE NOT INCLUDED IN SWITCH POINT ASSEMBLY AND MUST BE ORDERED SEPARATELY IF REQUIRED.

NOTE: THE FOLLOWING ITEMS ARE NOT INCLUDED IN THE SWITCH POINT ASSEMBLY AND MUST BE ORDERED SEPARATELY IF REQUIRED.

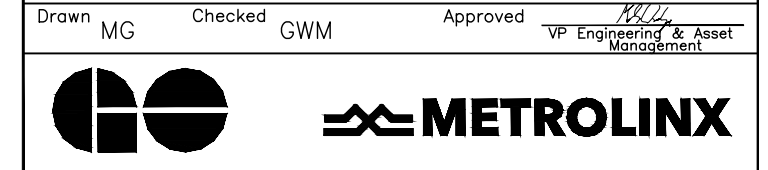
ITEM NO.	DESCRIPTION	STANDARD PLAN NO.	QUANTITY					
			DWG. No. GTS-0337					
			B	C	E	F	G	H
16	MJS CLIP ASSEMBLY (352J)	GTS-0352/J	2	2	2	2	2	2
17	MJS CLIP ASSEMBLY (352K)	GTS-0352/K	3	3	3	3	3	3

METRIC CONVERSION: 1 inch=25.4mm, 1 foot=304.8mm

1	18/07/27	ADDED IMPERIAL TO METRIC CONVERSION NOTE	
No.	Date	Revision	By Approved

Standard / **ASSEMBLY 39'0" SAMSON POINT RAIL 132 LB. R.E. RAIL**

Drawn MG Checked GWM Approved *KBL*
 VP Engineering & Asset Management



Date SEPT 15/2017 Plan Number GTS-0337 Rev 1