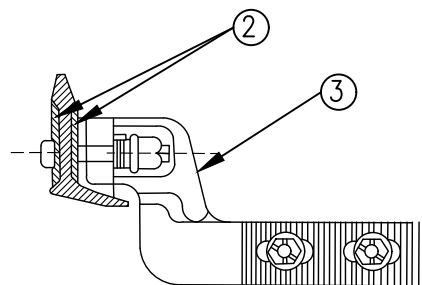
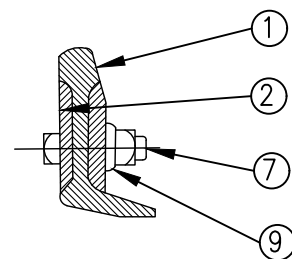


BOLTS SUPPLIED & INSTALLED WITH FRONT ROD BY SIGNAL DEPT

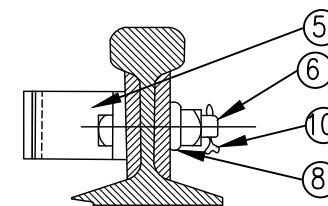
ASSEMBLY OF 16'-6" POINT RAIL  
DRAWING NO. GTS-0363/B  
LEFT HAND POINT RAIL



CLIP ASSEMBLY



SECTION A



STOP ASSEMBLY

NOTES

WHEN REFERRING TO POINT RAILS, DRAWING NO. MUST BE STATED AS A OR B INDICATE RIGHT OR LEFT HAND POINT:  
A- RIGHT HAND POINT  
B- LEFT HAND POINT (ILLUSTRATED)

| ITEM NO. | DESCRIPTION                                    | STANDARD PLAN NO. | MARK NO. | QUANTITY        |    |
|----------|--|-------------------|----------|-----------------|----|
|          |  |                   |          | DWG.NO.GTS-0332 |    |
|          |  |                   |          | A               | B  |
| 1        | RIGHT POINT RAIL                               | GTS-0417          |          | 1               | -  |
|          | LEFT POINT RAIL                                |                   |          | -               | 1  |
| 2        | REINFORCING BAR 1/2" THK X 15'-0" LONG.        | GTS-0342/X        |          | 2               | 2  |
| 3        | RIGHT HAND "MJ"-RACOR CLIP ( ABEX NO. HB-501A) | GTS-0352/E        |          | -               | 1  |
|          | LEFT HAND "MJ"-RACOR CLIP ( ABEX NO. HB-501A)  | GTS-0352/F        |          | 1               | -  |
| 4        | RIGHT HAND "MJ"-RACOR CLIP ( ABEX NO. HB-501B) | GTS-352/G         |          | -               | 1  |
|          | LEFT HAND "MJ"-RACOR CLIP ( ABEX NO. HB-501B)  | GTS-352/H         |          | 1               | -  |
| 5        | STOP BLOCK                                     | GTS-0339/M        | M        | 1               | 1  |
| 6        | 3/4" DIA-10 UNC SQ.HD.BOLT X 4" LG.C/W SQ.NUT  | GTS-1305/6        |          | 2               | 2  |
| 7        | 1" DIA-8 UNC SQ.HD.BOLT X 3-1/2" LG.C/W SQ.NUT | GTS-1309/13       |          | 14              | 14 |
| 8        | SPRING WASHER FOR 3/4" DIA BOLT                | GTS-1301          |          | 2               | 2  |
| 9        | SPRING WASHER FOR 1" DIA BOLT                  | GTS-1301          |          | 14              | 14 |
| 10       | 3/16" COTTER PIN X 1-1/4" LONG                 |                   |          | 2               | 2  |

METRIC CONVERSION: 1 inch=25.4mm, 1 foot=304.8mm

|     |          |  |
|-----|----------|--|
| 1   | 18/07/27 | ADDED IMPERIAL TO METRIC CONVERSION NOTE |
| No. | Date     | Revision                                 |
|     |          | By Approved                              |

Standard / **ASSEMBLY**  
**16'-6" POINT RAIL**  
**POWER/MANUAL-136LB. R.E. RAIL**

Drawn \_\_\_\_\_ Checked \_\_\_\_\_ Approved *KBL*  
VP Engineering & Asset Management



Date DEC 15, 2017 Plan Number GTS-0363 Rev 1

REFERENCE: TS-363 A/B Sheet 1 OF 1