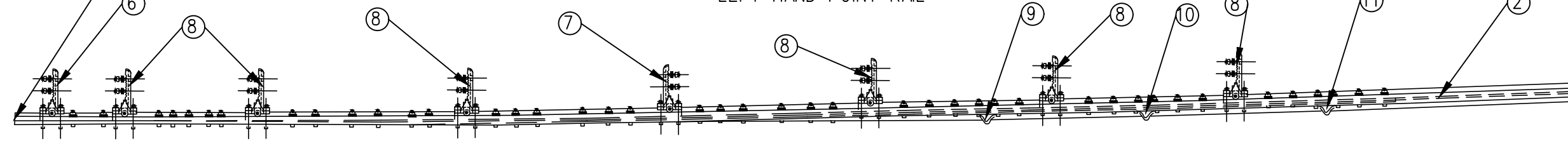


ASSEMBLY OF 63'-3" CURVED SAMSON POINT RAIL
DRAWING NO. GTS-0371/B
LEFT HAND POINT RAIL

A
BOLTS SUPPLIED & INSTALLED WITH
FRONT ROD BY SIGNAL DEPT



ASSEMBLY OF 63'-3" CURVED SAMSON POINT RAIL
DRAWING NO. GTS-0371/A
RIGHT HAND POINT RAIL

NOTES

CONVERSION FACTOR: 1 INCH=25.4mm, 1 FOOT=304.8mm

WHEN REFERRING TO POINT RAILS, DRAWING NO. MUST BE STATED AS A OR B INDICATE SPECIFIC POINT REQUIRED.

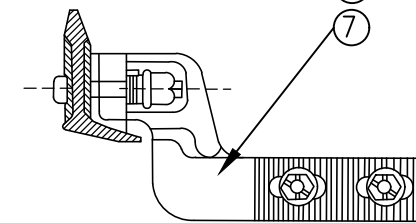
NO.20 EQUILATERAL TURNOUT (CURVED SWITCH) GTS-0277 E/F

GTS-0371A RIGHT SAMSON CURVED POINT RAIL
GTS-0371B LEFT SAMSON CURVED POINT RAIL

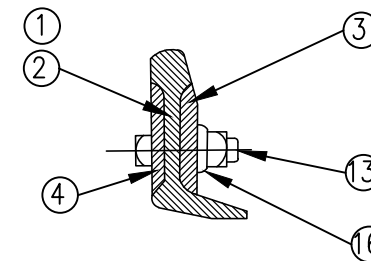
METRIC CONVERSION: 1 inch=25.4mm, 1 foot=304.8mm

1	18/07/27	ADDED IMPERIAL TO METRIC CONVERSION NOTE	
No.	Date	Revision	By Approved
Standard		ASSEMBLY-UNIFORM RISER DESIGN 63'-6" SAMSON POINT RAIL NO.20 EQUILATERAL ALL WELDED TURNOUT FOR POWER OPERATED-136LB. R.E. RAIL	
Drawn	Checked	Approved	VP Engineering & Asset Management

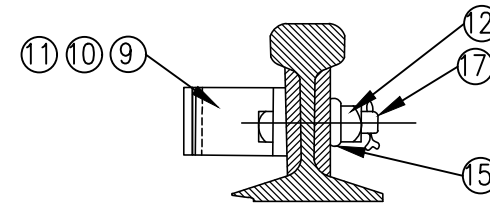
ITEM NO.	DESCRIPTION	STANDARD PLAN NO.	MARK NO.	QUANTITY	
				A	B
1	LEFT SAMSON CURVED POINT RAIL	GTS-0443	-	-	1
2	RIGHT SAMSON CURVED POINT RAIL	GTS-0443	-	1	-
3	REINFORCING BAR 1 1/4" THK X 46'-0" LONG.	GTS-0342/00	-	1	1
4	REINFORCING BAR 1/2" THK X 46'-0" LONG.	GTS-0342/PP	-	1	1
5	RIGHT HAND "MJ"-RACOR CLIP (ABEX NO. HB-504A)	GTS-0352/N	-	-	1
6	LEFT HAND "MJ"-RACOR CLIP (ABEX NO. HB-504A)	GTS-0352/O	-	1	-
7	RIGHT HAND "MJ"-RACOR CLIP (ABEX NO. HB-504B)	GTS-0352/P	-	1	6
8	LEFT HAND "MJ"-RACOR CLIP (ABEX NO. HB-504B)	GTS-0352/Q	-	6	1
9	STOP BLOCK NO.1	GTS-0339/U	-	1	1
10	STOP BLOCK NO.2	GTS-0339/P	-	1	1
11	STOP BLOCK NO.3	GTS-0339/T	-	1	1
12	3/4" DIA-10 UNC SQ.HD.BOLT X 4 3/4" LG.C/W SQ.NUT	GTS-1305/9	-	6	6
13	1" DIA-8 UNC SQ.HD.BOLT X 4-1/4" LG.C/W SQ.NUT	GTS-1309/24	-	32	32
14	1" DIA-8 UNC SQ.HD.BOLT(3/8" HD) X 4-1/4" LG.C/W SQ.NUT	GTS-1309/25	-	5	5
15	SPRING WASHER FOR 3/4" DIA BOLT	GTS-1301	-	6	6
16	SPRING WASHER FOR 1" DIA BOLT	GTS-1301	-	37	37
17	3/16" COTTER PIN X 1-1/4" LONG	-	-	6	6
18	IDENTIFICATION TAG	M-151	-	1	1



CLIP ASSEMBLY



SECTION A



STOP ASSEMBLY

Date DEC 15, 2017 Plan Number GTS-0371 Rev 1

REFERENCE: TS-371 A/B

Sheet 1 OF 1

