

NOTES:

THIS POINT IS FOR USE ON BOLTED GEOMETRY TURNOUTS. WHEN INITIAL CONVERTING FROM 39'-0" POINT TO A 61'-3" POINT THE RETROFIT KIT SHOWN ON FS-335 MUST BE ORDERED

WHEN REFERRING TO POINT RAILS, DRAWING NUMBER MUST BE STATED AS B, C, E, F, G OR H TO INDICATE SPECIFIC POINT REQUIRED.

STOCK NUMBERS FOR POINT ASSEMBLIES USED ON:

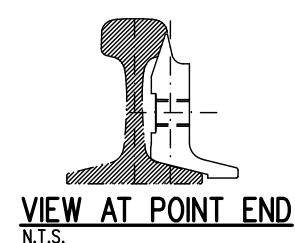
NO. 20 TURNOUT (CURVED SWITCH) GTS-0263
RIGHT HAND TURNOUT

- GTS-0376 G RIGHT SAMSON STRAIGHT POINT RAIL
- GTS-0376 B LEFT SAMSON CURVED POINT RAIL

LEFT HAND TURNOUT

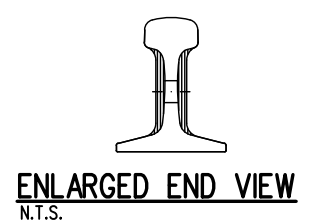
- GTS-0376 C RIGHT SAMSON CURVED POINT RAIL
- GTS-0376 H LEFT SAMSON STRAIGHT POINT RAIL

SWITCH CLIPS AND HEEL ASSEMBLY ARE NOT INCLUDED IN SWITCH POINT ASSEMBLY AND MUST BE ORDERED SEPARATELY IF REQUIRED.



ASSEMBLY 39'-0" GEOMETRY, 61'-3" LONG SAMSON TW RAIL

- LEFT STRAIGHT POINT RAIL ASSEMBLY - GTS 0376 H
- LEFT CURVED POINT RAIL ASSEMBLY - GTS 0376 B (ILLUSTRATED)
- RIGHT STRAIGHT POINT RAIL ASSEMBLY - GTS 0376 G
- RIGHT CURVED POINT RAIL ASSEMBLY - GTS 0376 C



POINT ASSEMBLY INCLUDES:

ITEM NO.	DESCRIPTION	STANDARD PLAN NO.	QUANTITY DWG. No. GTS-0376			
			B	C	G	H
1	RIGHT SAMSON CURVED POINT RAIL - 136 TW RIGHT SAMSON STRAIGHT POINT RAIL - 136 TW LEFT SAMSON CURVED POINT RAIL - 136 TW LEFT SAMSON STRAIGHT POINT RAIL - 136 TW		-	1	-	-
2	STOP BLOCK	GTS-0399N	1	1	1	1
3	STOP BLOCK	GTS-0399P	1	1	1	1
4	STOP BLOCK	GTS-0399M	1	1	1	1
5	3/4" DIA. - 10 UNC SQ. HD. BOLT x 4" LONG DRILLED C/W SQ. NUT	GTS-1305/6	6	6	6	6
6	SPRING WASHER FOR 3/4" DIA. BOLT	GTS-1301	6	6	6	6
7	3/16" COTTER PIN x 1-1/4" LONG		6	6	6	6
8	SHIM 3/4" THK. x 7" LONG	GTS-0343E	5	5	5	5

NOTE: THE FOLLOWING ITEMS ARE NOT INCLUDED IN THE SWITCH POINT ASSEMBLY AND MUST BE ORDERED SEPARATELY IF REQUIRED.

ITEM NO.	DESCRIPTION	STANDARD PLAN NO.	QUANTITY DWG. No. GTS-0376			
			B	C	G	H
9	HEEL BLOCK	GTS-0383TW	1	1	1	1
10	1-1/8" DIA. - 7 UNC SQ. HD. BOLT x 5-1/2" LG.	GTS-1308/10	2	2	2	2
11	SPRING WASHER FOR 1-1/8" BOLT	GTS-1301	2	2	2	2
12	LOCKNUT FOR 1 1/8" BOLT - 7 UNC	GTS-1302	2	2	2	2
13	MJS CLIP ASSEMBLIES (352J)	GTS-0352J	2	2	2	2
14	MJS CLIP ASSEMBLIES (352K)	GTS-0352K	3	3	3	3

METRIC CONVERSION: 1 inch=25.4mm, 1 foot=304.8mm

1	18/07/27	ADDED IMPERIAL TO METRIC CONVERSION NOTE
No.	Date	Revision
		By Approved

Standard / **ASSEMBLY 39'0" GEOMETRY, 61'3" LONG SAMSON POINT RAIL-THICK WEB FOR POWER OPERATION-136 LB. R.E. RAIL**

Drawn MG Checked GWM Approved *[Signature]* VP Engineering & Asset Management



Date SEPT 15/2017 Plan Number GTS-0376 Rev 1