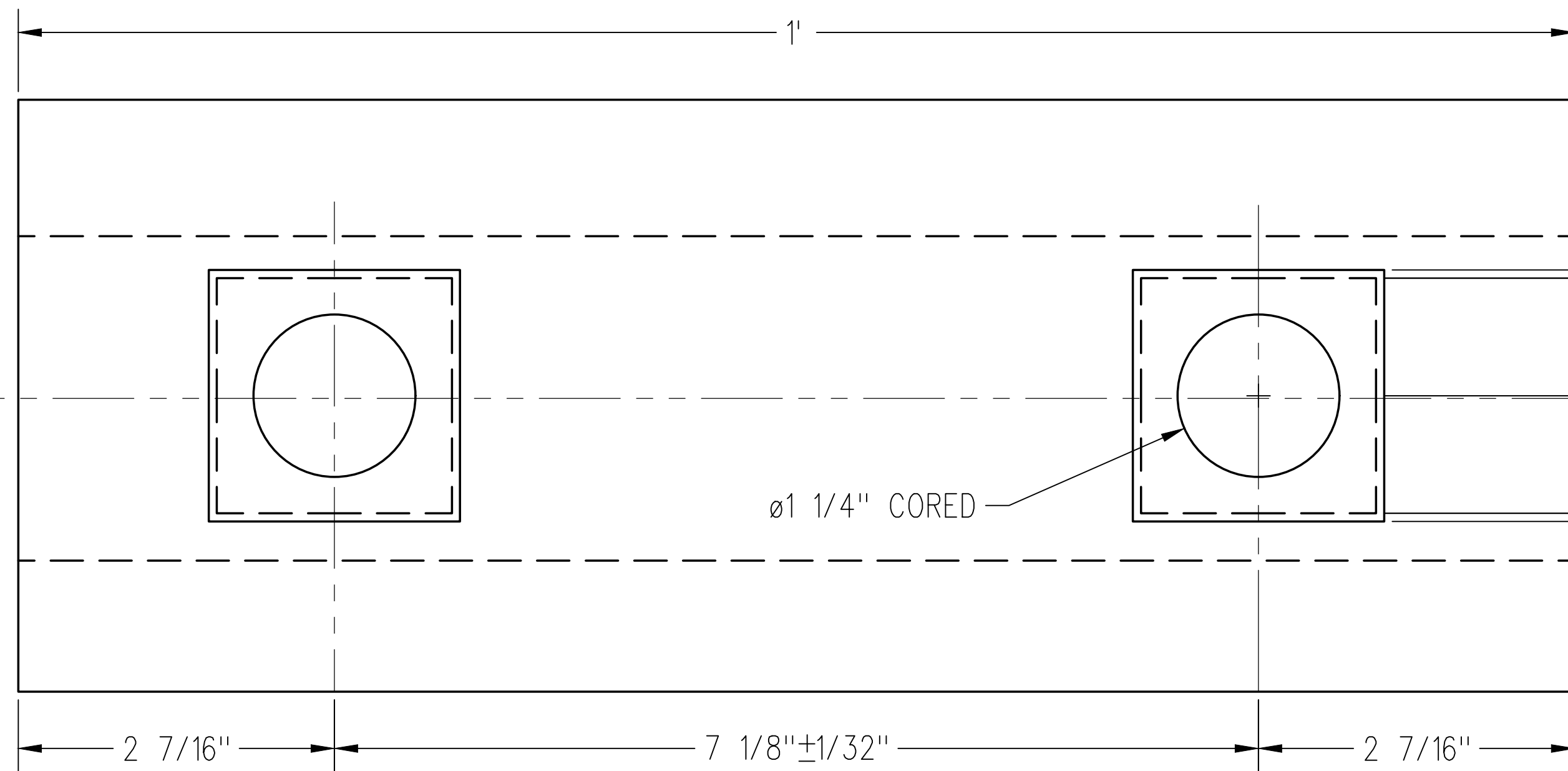
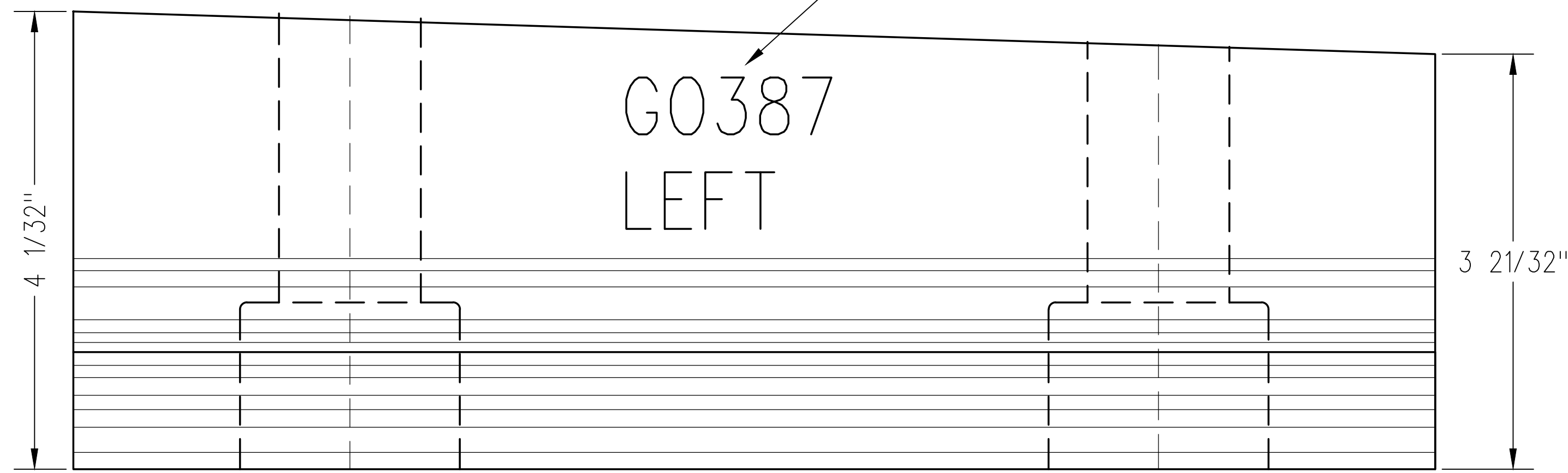


IDENTIFICATION OF CHARACTERS TO BE CAST
1/2" MINIMUM HEIGHT AS SHOWN



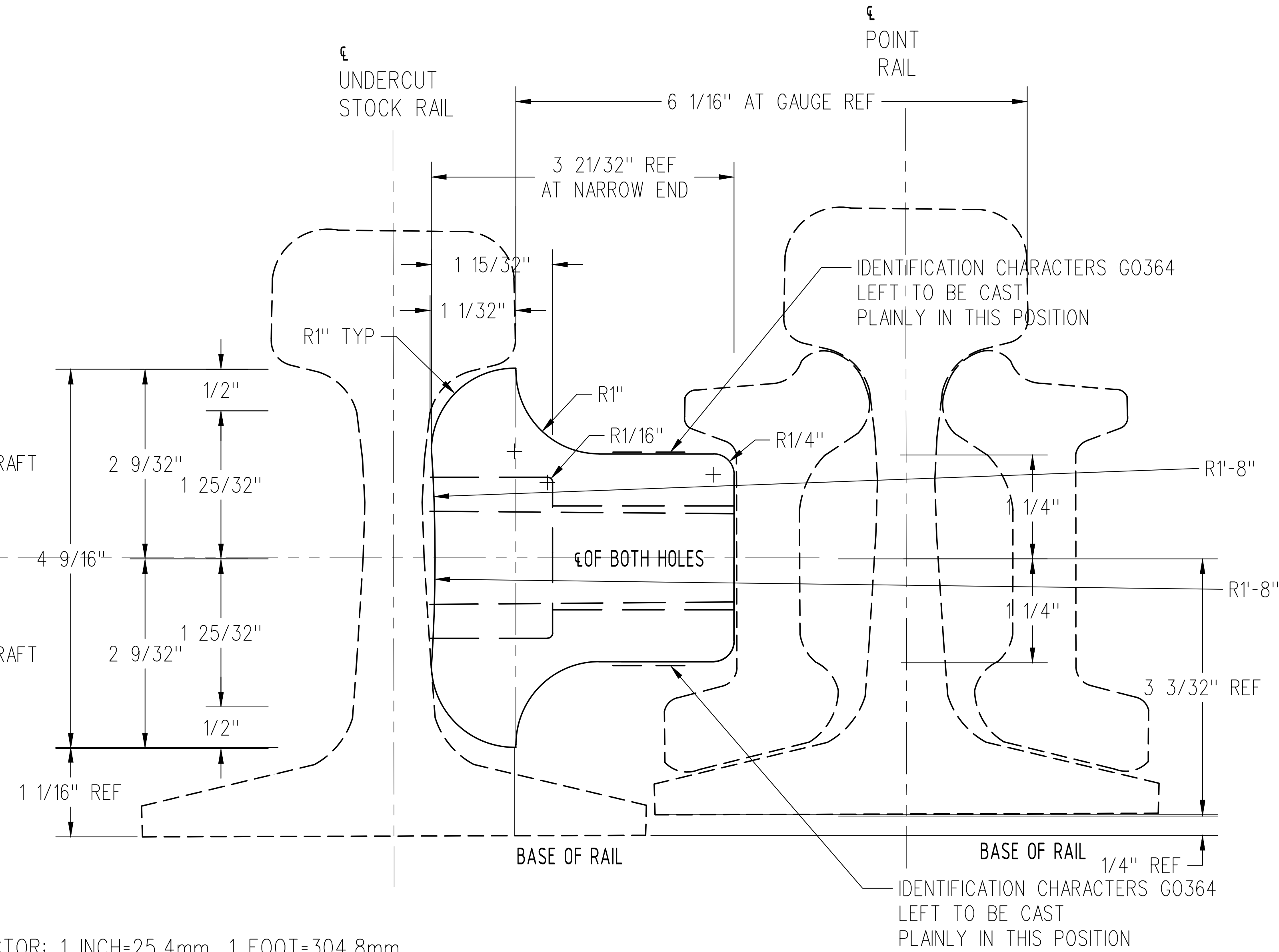
HEEL BLOCK

MATERIAL:

ALL HEEL BLOCKS, UNLESS OTHERWISE SPECIFIED, ARE TO BE MADE IN GENERAL WITH LATEST REVISION OF A.S.T.M. SPECIFICATION FOR: MALLEABLE IRON A47, GRADE 32510 OR DUCTILE IRON A536, GRADE 65-45-12

NOTES

1. CONVERSION FACTOR: 1 INCH=25.4mm, 1 FOOT=304.8mm
2. ALL BEARING SURFACES SHALL BE FINISHED TO GIVE AN ACCURATE FIT AGAINST THE RAIL.
3. DIMENSIONS ARE FOR FINISHED BLOCKS. PROPER ALLOWANCE MUST BE MADE FOR SHRINKAGE WHEN MAKING PATTERNS.
4. 1/2" MINIMUM IDENTIFICATION CHARACTERS, RAISED 1/32", TO BE CAST ON THE BLOCK.
5. ALL SHARP EDGES TO BE ROUNDED TO 1/8"R
6. HOLES TO BE CORED OR DRILLED, THE USE OF ACETYLENE TORCH OR OTHER BURNING METHOD FOR THE MAKING OF HOLES OR CUTTING IN THE MANUFACTURE OF HEEL BLOCKS IS ABSOLUTELY PROHIBITED.
7. ALL TOLERANCES TO BE ±1/32" (NON-CUMULATIVE).



METRIC CONVERSION: 1 inch=25.4mm, 1 foot=304.8mm

No.	Date	Revision	By	Approved
1	18/07/27	ADDED IMPERIAL TO METRIC CONVERSION NOTE		

Standard NO. 16 & 20 TURNOUTS-39'-0" SWITCH POINTS
HEEL BLOCK
136LB. R.E. RAIL

Drawn MG Checked GGS Approved *[Signature]*
VP Engineering & Asset Management



METROLINX

Date DEC 15, 2017 Plan Number GTS-0387 Rev 1

REFERENCE: TS-387 Sheet 1 OF 1