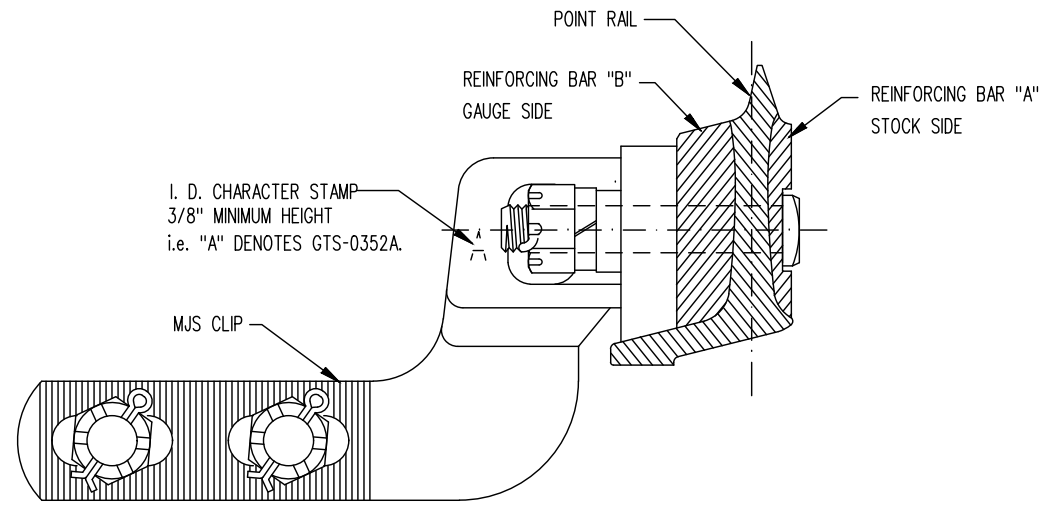
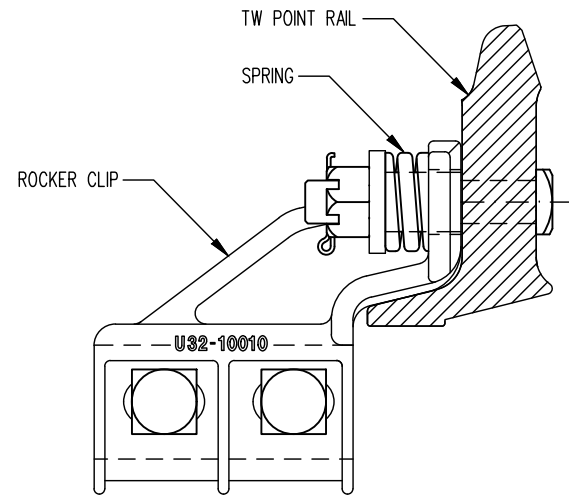


• MJ CROSS REFERENCE TABLE •

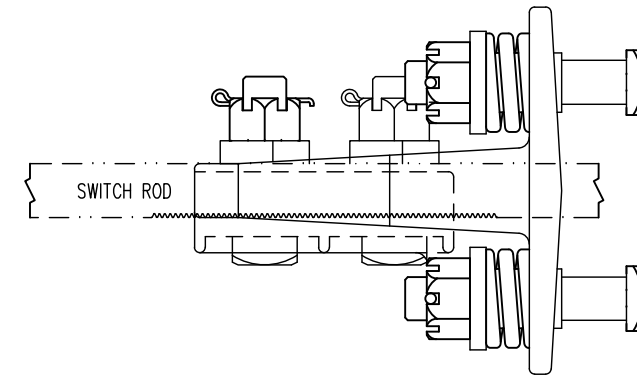
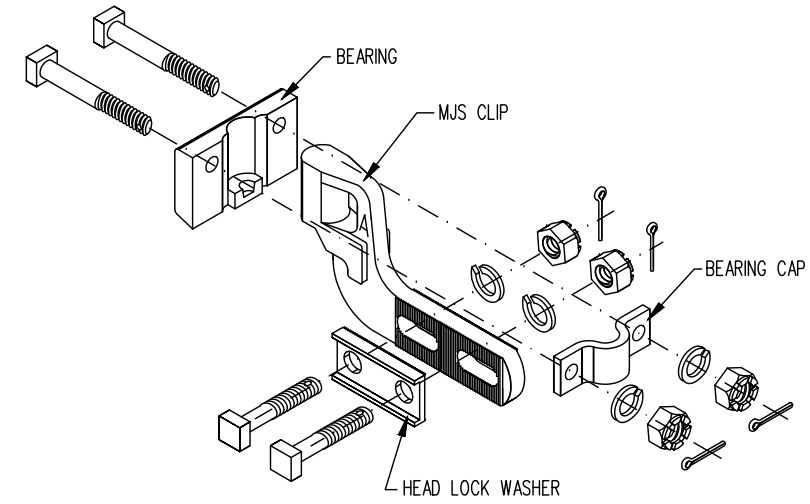
MJ CLIPS	ROCKER CLIPS		
	100 LB.	115 LB.	132 LB./ 136 TW
GTS-0352 A	GTS-0352 A	---	---
GTS-0352 B	GTS-0352 A	---	---
GTS-0352 C	GTS-0352 B	---	---
GTS-0352 D	GTS-0352 B	---	---
GTS-0352 E	---	GTS-0352 P	GTS-0352 L
GTS-0352 F	---	GTS-0352 P	GTS-0352 L
GTS-0352 G	---	---	GTS-0352 M
GTS-0352 H	---	---	GTS-0352 M
GTS-0352 J	---	GTS-0352 Q	GTS-0352 O
GTS-0352 K	---	GTS-0352 Q	GTS-0352 O
GTS-0352 L	---	---	GTS-0352 N
GTS-0352 M	---	---	GTS-0352 N
GTS-0352 N	---	---	GTS-0352 O
GTS-0352 O	---	---	GTS-0352 O
GTS-0352 P	---	---	GTS-0352 N
GTS-0352 Q	---	---	GTS-0352 N



MJS CLIP ASSEMBLY



ROCKER CLIP ASSEMBLY



NOTES:

- 1.- WHEN REFERRING TO CLIPS DRAWING NO. MUST BE STATED AS GTS-0352 A,B,C ETC. TO INDICATE CLIPS REQUIRED.
- 2.- THIS IS AN ASSEMBLY DRAWING, FOR COMPONENT DETAILS SEE MANUFACTURER'S DRAWING.
- 3.- STOCK NUMBERS SHOWN ARE FOR COMPLETE ASSEMBLIES.
- 4.- SWITCH RODS ARE NOT INTERCHANGEABLE BETWEEN ROCKER CLIPS AND MJS CLIPS.

WEIGHT OF RAIL	MJS CLIPS ASSEMBLY	ROCKER CLIPS ASSEMBLY	REINFORCING BARS		
			"A" STOCK SIDE		"B" GAUGE SIDE
			SLOTTED	NON-SLOTTED	
100	352 A		3/8"	--	3/8"
100	352 B		3/8"	--	1-1/4"
115	352 C	352 P	1/2"	--	1/2"
115	352 D	352 Q	--	1/2"	1/2"
115	352 E		1/2"	--	1-1/4"
115	352 F		--	1/2"	1-1/4"
132/136	352 G		1/2"	--	1/2"
132/136	352 H		--	1/2"	1/2"
132/136	352 J	352 O	1/2"	--	1-1/4"
132/136	352 K	352 N	--	1/2"	1-1/4"
136 TW		352 L	SLOTTED - THICK WEB		
136 TW		352 M	NON-SLOTTED - THICK WEB		

METRIC CONVERSION: 1 inch=25.4mm, 1 foot=304.8mm

1	18/07/27	ADDED IMPERIAL TO METRIC CONVERSION NOTE	
No.	Date	Revision	By Approved
Standard		"MJS" AND "ROCKER" CLIP ASSEMBLIES	
Drawn	MG	Checked	GS
		Approved	<i>[Signature]</i> VP Engineering & Asset Management
Date		Plan Number	Rev
SEPT 15/2017		GTS-0352	1
REFERENCE: TS-0352_R2		Sheet 1 OF 1	