

LV BRACE SWITCH PLATE
 USED WITH LV BRACE FOR 136LB GTS-0354
 LV BRACE FOR 115LB GTS-0354

PLATES	A ±1/16	B ±1/64	C +0 -1/32	D ±1/64	E ±1/16	WEIGHT (LBS.)
SP-775LV	26	7-7/32	6-3/32	7-13/16	9-3/4	47
SP-798LV	25	7-7/32	6-3/32	7-13/16	9-3/4	53
SP-804LV	24-1/2	6-11/16	5-19/32	7-1/4	10-1/2	45
SP-818LV	24-1/2	6-23/32	5-19/32	7-5/16	9-3/4	44.7

NOTE: 3/4X3/4 PUNCHING IN PLACE OF 1" DIA HOLES

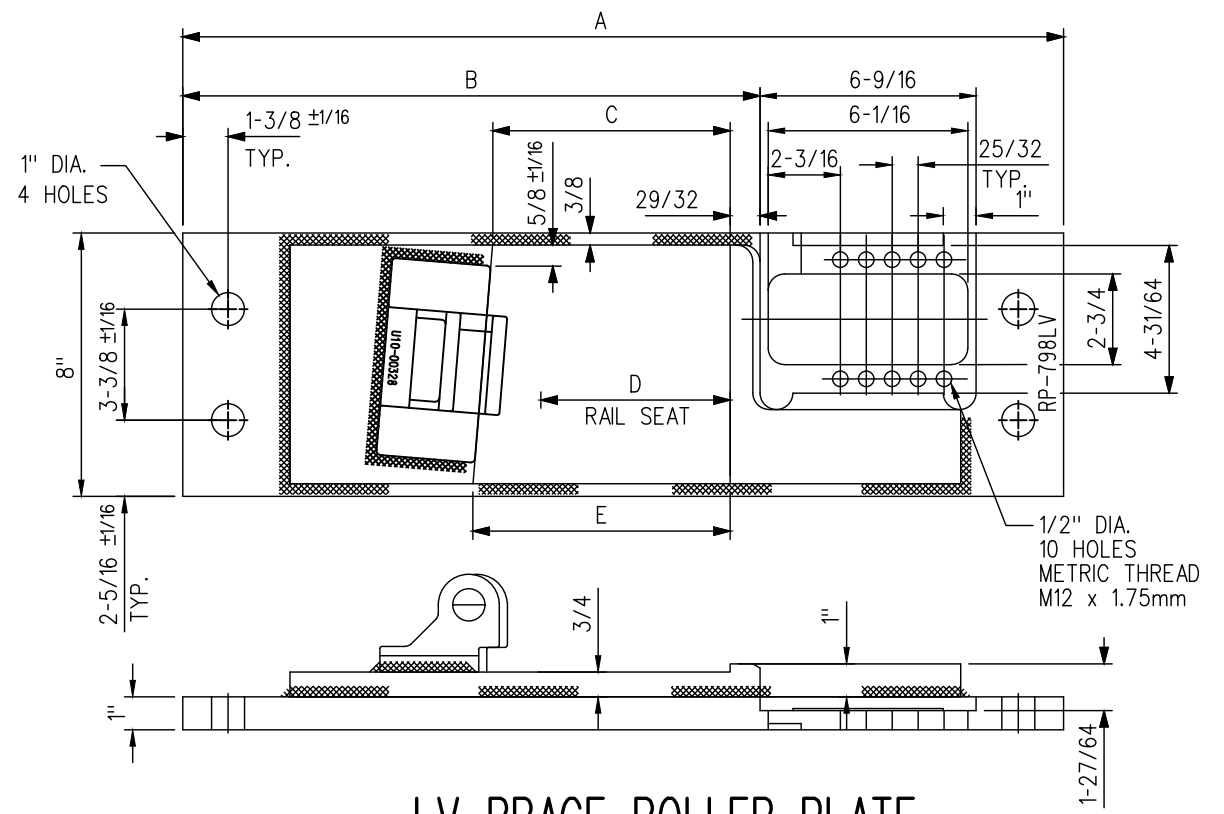
CLAMPTITE BRACE SWITCH PLATE
 USED WITH CLAMPTITE BRACE

PLATES
SP-775CB
SP-798CB
SP-804CB
SP-818CB

MATERIAL

PLATES TO CONFORM TO THE LATEST REVISION OF A.S.T.M. SPECIFICATION A-36 FOR COMMERCIAL QUALITY HOT ROLLED BAR STEEL CHEMICAL REQUIREMENT.

	MINIMUM	MAXIMUM
CARBON	0.25 %	0.29 %
MANGANESE	0.60 %	1.20 %
PHOSPHORUS		0.04 %
SULPHUR		0.05 %
SILICON		0.40 %



LV BRACE ROLLER PLATE
 USED WITH LV BRACE FOR 136LB GTS-0354
 LV BRACE FOR 115 LB GTS-0354

ADJUSTABLE SWITCH POINT ROLLERS, GTS-0390

PLATES	A ±1/16	B ±1/64	C ±1/64	D +0 -1/32	E ±1/64	WEIGHT (LBS.)
RP-798LV	26-3/4	17-17/32	7-7/32	6-3/32	7-13/16	94
RP-829LV	26-1/4	17-1/32	6-23/32	5-19/32	7-5/16	97

CLAMPTITE BRACE ROLLER PLATE
 USED WITH CLAMPTITE BRACE

PLATES
RP-798CB
RP-829CB

NOTES

1. WHEN REFERRING TO SWITCH PLATES, PLAN AND PLATE NUMBERS MUST BE STATED TO INDICATE SPECIFIC PLATE REQUIRED.
2. IDENTIFICATION CHARACTERS (1/2" MINIMUM HEIGHT) TO BE STAMPED ON EACH PLATE AS SHOWN.
3. ALL DIMENSIONS ARE IN INCHES.
4. UNLESS OTHERWISE SPECIFIED ALL TOLERANCES TO BE ±1/32.
5. TOLERANCES ARE NOT TO EXCEED THOSE INDICATED IN THE GO TOLERANCE DRAWINGS.
6. ALL HOLES TO BE PUNCHED ; THE USE OF ACETYLENE TORCH OR OTHER BURNING METHOD FOR THE MAKING OF HOLES OR CUTTING IN THE MANUFACTURE OF SWITCH PLATES IS ABSOLUTELY PROHIBITED.
7. LV BRACE PLATES ONLY SUPPLIED WITH NORTRAK KITS. FOR CLAMPTITE BRACE SEE MANUFACTUER DRAWINGS.

METRIC CONVERSION: 1 inch=25.4mm, 1 foot=304.8mm

1	18/07/27	ADDED IMPERIAL TO METRIC CONVERSION NOTE	
No.	Date	Revision	By Approved

Standard / **LV CLAMPTITE BRACE PLATES FOR 115/132/136 RE RAIL BRACE**

Drawn PCV Checked DL Approved *[Signature]* VP Engineering & Asset Management



Date SEPT 15/2017 Plan Number GTS-0508 Rev 1