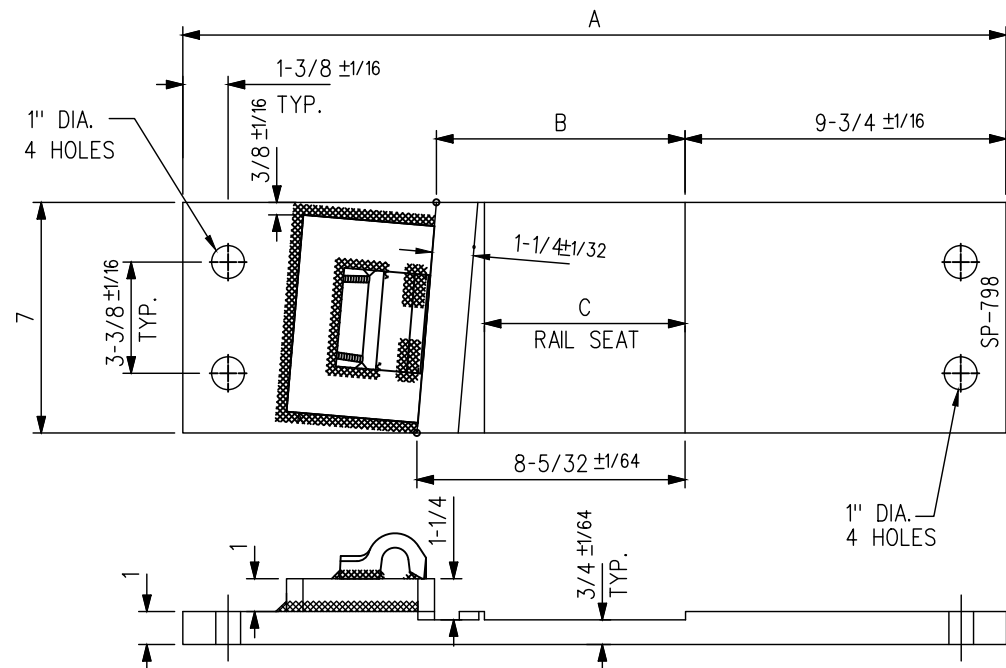


SWITCH PLATE SP-775 (FOR BOLTLESS RAIL BRACE)

REPLACED BY
WEIGHT 53LBS.

NOTE: REPLACEMENT PLATE UTILIZES LV OR CLAMPTITE BOLTLESS PLATE



SWITCH PLATE

USED WITH SUREFIT BOLTLESS RAIL BRACE

PLATES	A ±1/16	B	C +0 -1/32	WEIGHT (LBS.)	REPLACED BY
SP-798	25	7-9/16	6-3/32	53	SP-798 LV/BC
SP-804	24-1/2	6-31/32	5-19/32	41.1	SP-804 LV/BC
SP-818	24-1/2	6-31/32	5-19/32	41.1	SP-818 LV/BC

NOTES

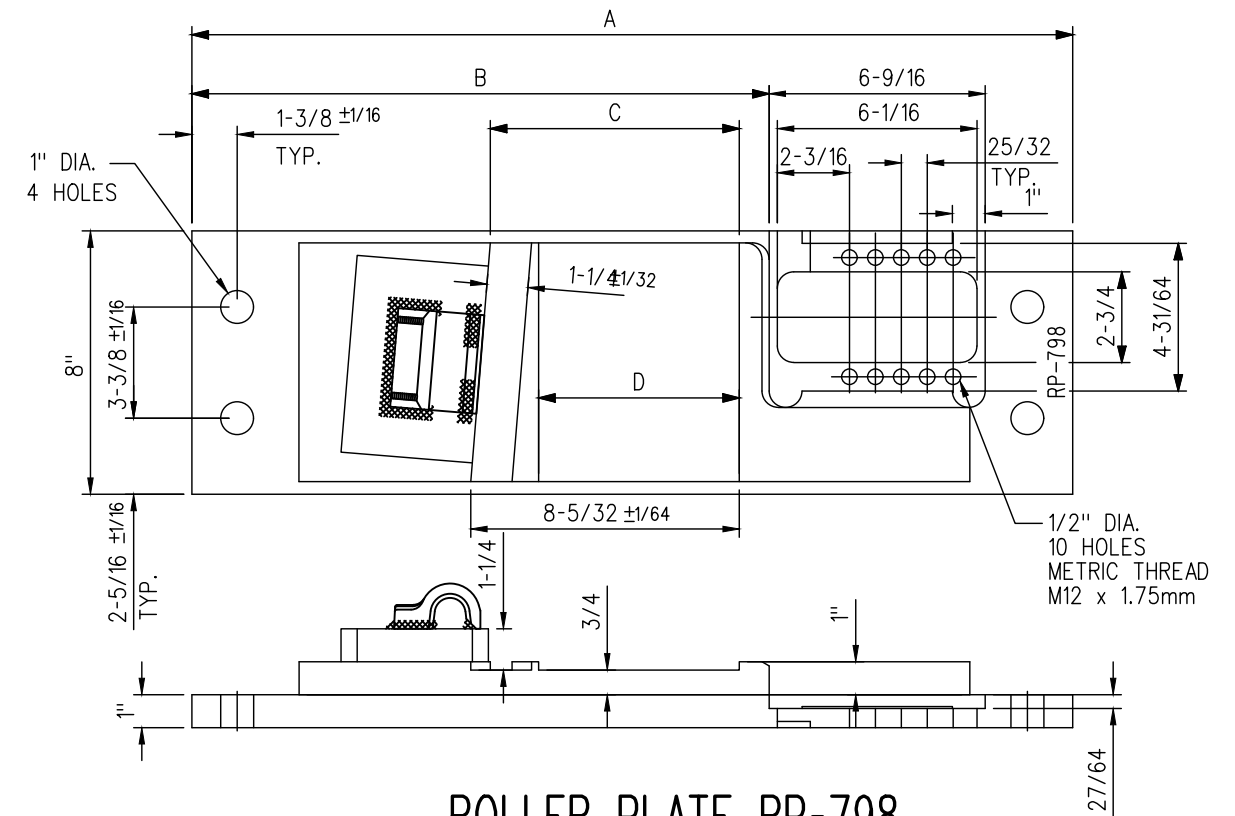
1. WHEN REFERRING TO SWITCH PLATES, PLAN AND PLATE NUMBERS MUST BE STATED TO INDICATE SPECIFIC PLATE REQUIRED.
2. IDENTIFICATION CHARACTERS (1/2" MINIMUM HEIGHT) TO BE STAMPED ON EACH PLATE AS SHOWN.
3. ALL DIMENSIONS ARE IN INCHES.
4. UNLESS OTHERWISE SPECIFIED ALL TOLERANCES TO BE ±1/32.
5. TOLERANCES ARE NOT TO EXCEED THOSE INDICATED IN THE GO TOLERANCE DRAWINGS.
6. ALL HOLES TO BE PUNCHED ; THE USE OF ACETYLENE TORCH OR OTHER BURNING METHOD FOR THE MAKING OF HOLES OR CUTTING IN THE MANUFACTURE OF SWITCH PLATES IS ABSOLUTELY PROHIBITED.

MATERIAL

PLATES TO CONFORM TO THE LATEST REVISION OF A.S.T.M. SPECIFICATION A-36 FOR COMMERCIAL QUALITY HOT ROLLED BAR STEEL CHEMICAL REQUIREMENT.

	MINIMUM	MAXIMUM
CARBON	0.25 %	0.29 %
MANGANESE	0.60 %	1.20 %
PHOSPHORUS		0.04 %
SULPHUR		0.05 %
SILICON		0.40 %

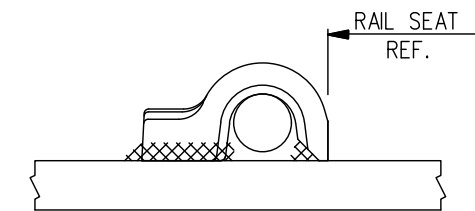
NOTE: 3/4X3/4 PUNCHING IN PLACE OF 1" DIA HOLES



ROLLER PLATE RP-798

USED WITH SUREFIT BOLTLESS RAIL BRACE, GTS-0354
ADJUSTABLE SWITCH POINT ROLLERS, GTS-0390

PLATES	A ±1/16	B	C +0 -1/32	D	WEIGHT (LBS.)	REPLACED BY
RP-798	26-3/4	17-17/32	7-9/16	6-3/32	94	RP-798 LV/BC
RP-829	26-1/4	15-3/32	6-31/32	5-19/32	92.8	RP-829 LV/BC



PANDROL SHOULDER DETAIL

METRIC CONVERSION: 1 inch=25.4mm, 1 foot=304.8mm

No.	Date	Revision	By	Approved
1	18/07/27	ADDED IMPERIAL TO METRIC CONVERSION NOTE		

Standard / **SWITCH PLATES FOR 132/136 RE RAIL BRACE**

Drawn PCV Checked DL Approved *[Signature]*
VP Engineering & Asset Management



Date SEPT 15/2017 Plan Number GTS-0508 Rev 1

REFERENCE: TS-0508_2_R2 Sheet 2 OF 3