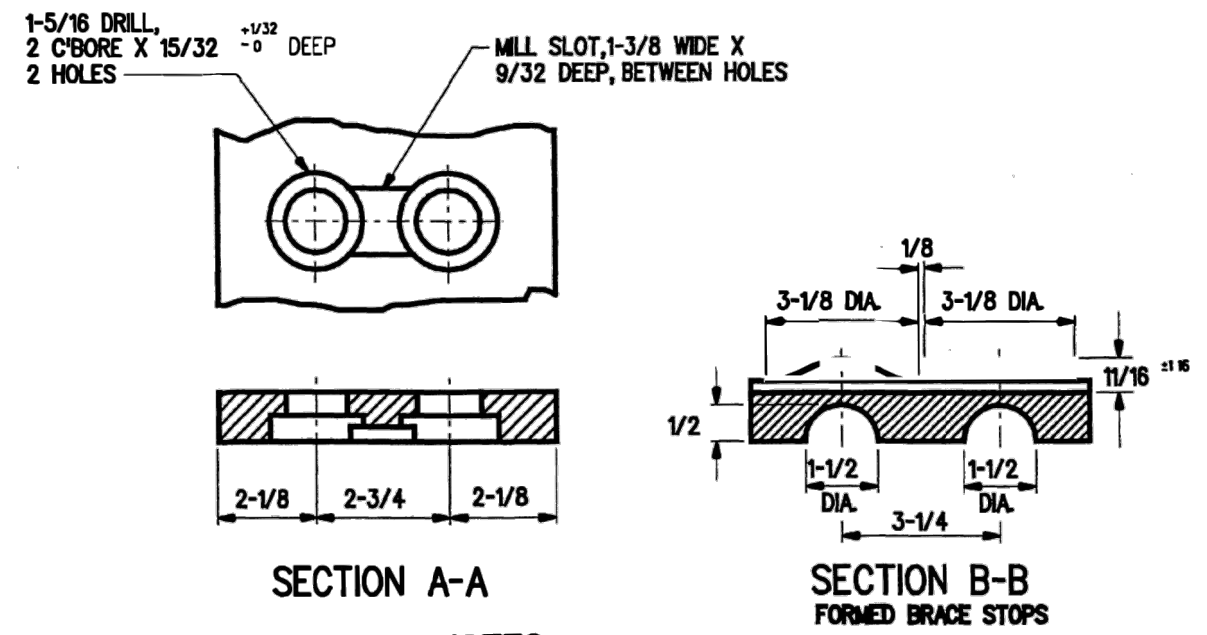


SEE NOTE 5
TWO 3-1/8 DIA. BOSSES,
EMBOSSED 1/2 DEEP, SPREAD
3-1/4 APART, SYMMETRICAL
ABOUT SECTION B-B.
(OR)
1/4 X 2 X 6-1/2 PAD TO BE
WELDED 3 SIDES - 1/4 FILLET



NOTES

1. WHEN REFERRING TO SWITCH PLATES, PLAN AND PLATE NUMBERS MUST BE STATED TO INDICATE SPECIFIC PLATE REQUIRED.
2. IDENTIFICATION CHARACTERS (1/2" MINIMUM HEIGHT) TO BE STAMPED ON EACH PLATE AS SHOWN.
3. ALL DIMENSIONS ARE IN INCHES.
4. UNLESS OTHERWISE SPECIFIED ALL TOLERANCES TO BE ±1/32.
5. BRACE STOPS MAY BE FORMED (SECTION B-B) OR WELDED PADS.
6. ALL HOLES TO BE PUNCHED; THE USE OF ACETYLENE TORCH OR OTHER BURNING METHOD FOR THE MAKING OF HOLES OR CUTTING IN THE MANUFACTURE OF SWITCH PLATES IS ABSOLUTELY PROHIBITED.

MATERIAL

PLATES TO CONFORM TO THE LATEST REVISION OF GO TRANSIT TRACK STANDARDS OR IN GENERAL WITH LATEST REVISION OF A.S.T.M. SPECIFICATION FOR COMMERCIAL QUALITY HOT ROLLED BAR STEEL A-675 CHEMICAL REQUIREMENT.

	MINIMUM	MAXIMUM
CARBON	0.15 %	0.25 %
MANGANESE	0.30 %	0.60 %
PHOSPHORUS		0.04 %
SULPHUR		0.05 %

PLATES	A	B	C	D	WEIGHT (LBS.)	STOCK NUMBERS	
						NEW	PART WORN
SP-317	0.117	0.133	0.109	0.140	44.42		
SP-334	0.054	0.070	0.171	0.203	43.22		

METRIC CONVERSION: 1 inch=25.4mm, 1 foot=304.8mm

1	18/07/27	ADDED IMPERIAL TO METRIC CONVERSION NOTE
No.	Date	Revision
		By Approved

Standard / SWITCH PLATES

Drawn MG Checked GGS Approved *[Signature]*
VP Engineering & Asset Management



Date DEC 15, 2017 Plan Number GTS-0510 Rev 1