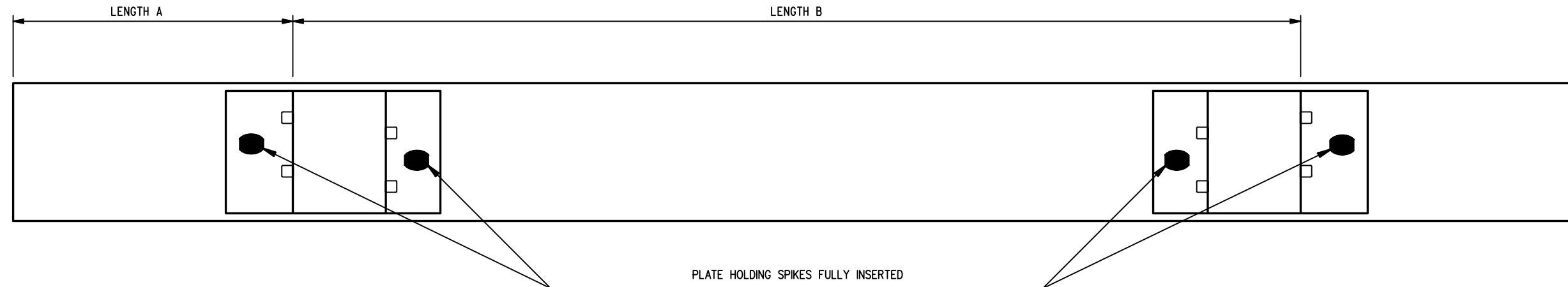
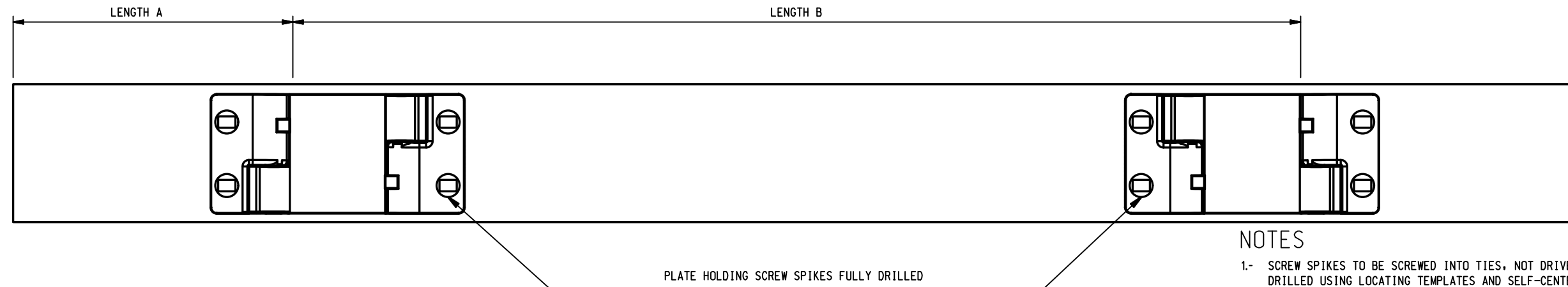


TIE PLATE SET UP



CAST PLATE SET UP



NOTES

- 1.- SCREW SPIKES TO BE SCREWED INTO TIES, NOT DRIVEN. PILOT HOLES TO BE DRILLED USING LOCATING TEMPLATES AND SELF-CENTERING GUIDES IN THE TIE PLATE HOLES.
- 2.- TIES PLATED WITH CONVENTIONAL PLATES TO HAVE PILOT HOLES DRILLED USING LOCATING TEMPLATES AND SELF-CENTERING GUIDES.
- 3.- TIE PLATES TO BE CENTERED ON TIE ON THE LONGITUDINAL AXIS AND SQUARE WITH RAIL BASE.
- 4.- FOR MSR PLATES, SCREW SPIKES TO BE SCREWED DOWN COMPLETE ON ALL HOLES.
- 5.- SCREW SPIKES REQUIRE A 5/8" PILOT HOLE DRILLED A MINIMUM OF 5" INTO THE TIE.

PLATE TYPE	DESCRIPTION	TIE LENGTH	LENGTH A	LENGTH B	WEIGHT
TIE PLATES	115LB	8'-6"	18 1/2" +/- 1/4"	65" +/- 1/8"	295
	136LB	8'-6"	18 1/4" +/- 1/4"	65 3/4" +/- 1/8"	290
	115LB	9'	21 1/2" +/- 1/4"	65" +/- 1/8"	
	136LB	9'	21 1/4" +/- 1/4"	65 3/4" +/- 1/8"	
CAST PLATES	115LB	8'-6"	18 1/2" +/- 1/4"	65" +/- 1/8"	295
	136LB	8'-6"	18 1/4" +/- 1/4"	65 3/4" +/- 1/8"	290
	115LB	9'	21 1/2" +/- 1/4"	65" +/- 1/8"	
	136LB	9'	21 1/4" +/- 1/4"	65 3/4" +/- 1/8"	

METRIC CONVERSION: 1 inch=25.4mm, 1 foot=304.8mm

1	18/07/27	ADDED IMPERIAL TO METRIC CONVERSION NOTE	
No.	Date	Revision	By Approved

Standard / **115 LB/136 LB RAIL
PRE-PLATED TIE**

Drawn _____ Checked _____ Approved *[Signature]*
VP Engineering & Asset Management



Date **SEPT 15/2017** Plan Number **GTS-0514** Rev **1**