

TYPICAL PANDROL SHOULDER INSTALLATION

NOTES

1. WHEN REFERRING TO SWITCH PLATES, PLAN AND PLATE NUMBERS MUST BE STATED TO INDICATE SPECIFIC PLATE REQUIRED.
2. IDENTIFICATION CHARACTERS (1/2" MINIMUM HEIGHT) TO BE STAMPED ON EACH PLATE AS SHOWN.
3. ALL DIMENSIONS ARE IN INCHES.
4. UNLESS OTHERWISE SPECIFIED ALL TOLERANCES TO BE ±1/32.

MATERIAL

PLATES TO CONFORM TO THE LATEST REVISION OF GO TRANSIT TRACK STANDARDS OR IN GENERAL WITH LATEST REVISION OF A.S.T.M. SPECIFICATION FOR COMMERCIAL QUALITY HOT ROLLED BAR STEEL A-675 CHEMICAL REQUIREMENT.

	MINIMUM	MAXIMUM
CARBON	0.15 %	0.25 %
MANGANESE	0.30 %	0.60 %
PHOSPHORUS		0.04 %
SULPHUR		0.05 %

PLATES	A	B	C	D	E	F	WEIGHT (LBS.)	STOCK NUMBERS	
	±.18	±.06						NEW	PART WORN
SP-365R	26	24-5/8	19-29/32	13-5/8	2°	15/16	54.33		
SP-366R	26-3/4	25-3/8	20-7/16	14-5/32	2°	7/8	55.06		
SP-391R	26-1/4	24-7/8	20-3/32	13-13/16	2°	15/16	55.00		
SP-392R	27	25-5/8	20-7/8	14-19/32	2°	7/8	55.84		
SP-411R	25-3/4	24-3/8	19-15/32	13-1/8	1°	31/32	54.01		
SP-412R	26	24-5/8	19-23/32	13-3/8	1°	15/16	54.12		
SP-413R	26-1/4	24-7/8	20-1/32	13-11/16	1°	29/32	54.31		
SP-431R	25-3/4	24-3/8	19-11/16	13-3/8	1°	31/32	54.01		
SP-432R	26-1/4	24-7/8	20-3/32	13-3/4	1°	15/16	55.00		
SP-454R	26-1/2	25-1/8	20-5/16	13-31/32	1°	7/8	54.47		
SP-502R	26	24-5/8	19-31/32	13-11/16	2°	31/32	55.01		
SP-503R	26-3/4	25-3/8	20-9/16	14-9/32	2°	15/16	56.46		
SP-720R	27-1/4	25-7/8	20-13/16	14-5/8	3°	15/16	—		
SP-732R	26-3/4	25-3/8	20-5/8	14-7/16	3°	15/16	—		
SP-743R	25-3/4	24-3/8	19-15/32	13-3/16	1°	31/32	—		
SP-744R	26	24-5/8	19-3/4	13-1/2	1°	15/16	—		
SP-745R	26-1/4	24-7/8	20-1/16	13-13/16	1°	29/32	—		
SP-746R	26-3/4	25-3/8	20-13/32	14-5/32	1°	7/8	—		

METRIC CONVERSION: 1 inch=25.4mm, 1 foot=304.8mm

1	18/07/27	ADDED IMPERIAL TO METRIC CONVERSION NOTE
No.	Date	Revision
		By Approved

Standard/

SWITCH PLATES
RIGHT HAND

Drawn RFP Checked GGS Approved VP Engineering & Asset Management

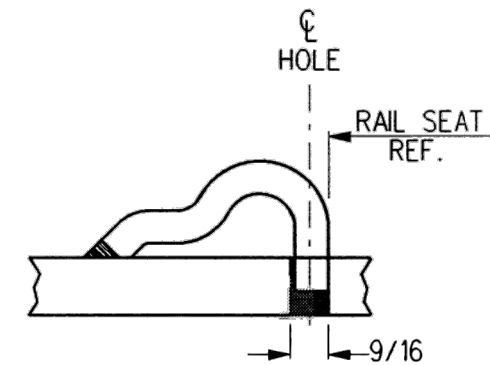
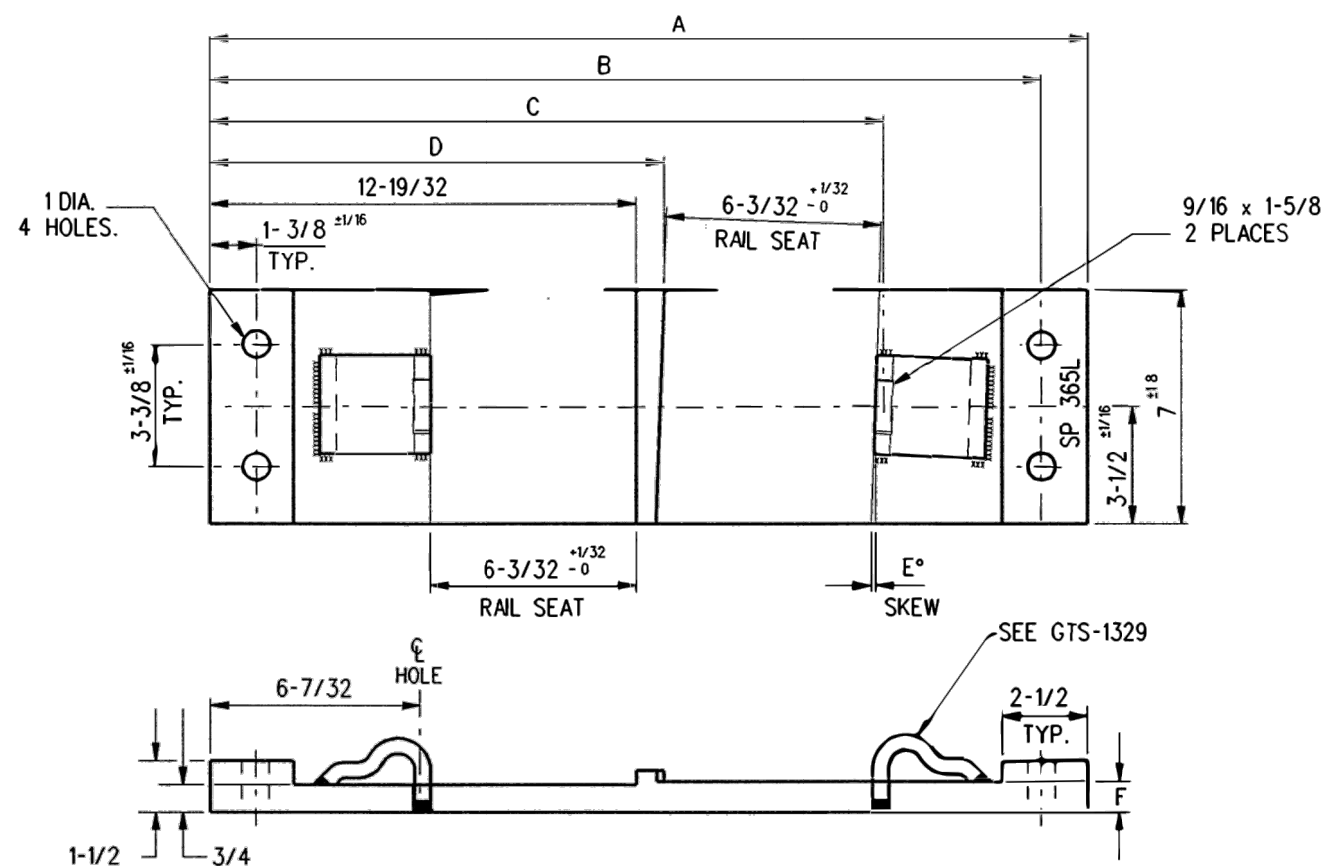


METROLINX

Date DEC 15, 2017 Plan Number GTS-0531 Rev 1

REFERENCE: TS-531

Sheet 1 OF 2



TYPICAL PANDROL SHOULDER NOTES INSTALLATION

1. WHEN REFERRING TO SWITCH PLATES, PLAN AND PLATE NUMBERS MUST BE STATED TO INDICATE SPECIFIC PLATE REQUIRED.
2. IDENTIFICATION CHARACTERS (1/2' MINIMUM HEIGHT) TO BE STAMPED ON EACH PLATE AS SHOWN.
3. ALL DIMENSIONS ARE IN INCHES.
4. UNLESS OTHERWISE SPECIFIED ALL TOLERANCES TO BE $\pm 1/32$.

MATERIAL

PLATES TO CONFORM TO THE LATEST REVISION OF GO TRANSIT TRACK STANDARDS OR IN GENERAL WITH LATEST REVISION OF A.S.T.M. SPECIFICATION FOR COMMERCIAL QUALITY HOT ROLLED BAR STEEL A-675 CHEMICAL REQUIREMENT.

	MINIMUM	MAXIMUM
CARBON	0.15 %	0.25 %
MANGANESE	0.30 %	0.60 %
PHOSPHORUS		0.04 %
SULPHUR		0.05 %

PLATES	A	B	C	D	E	F	WEIGHT (LBS.)	STOCK NUMBERS	
	$\pm 1/8$	$\pm 1/16$						NEW	PART WORN
SP-365L	26	24-5/8	19-29/32	13-5/8	2°	15/16	54.33		
SP-366L	26-3/4	25-3/8	20-7/16	14-5/32	2°	7/8	55.06		
SP-391L	26-1/4	24-7/8	20-3/32	13-13/16	2°	15/16	55.00		
SP-392L	27	25-5/8	20-7/8	14-19/32	2°	7/8	55.84		
SP-411L	25-3/4	24-3/8	19-15/32	13-1/8	1°	31/32	54.01		
SP-412L	26	24-5/8	19-23/32	13-3/8	1°	15/16	54.12		
SP-413L	26-1/4	24-7/8	20-1/32	13-11/16	1°	29/32	54.31		
SP-431L	25-3/4	24-3/8	19-11/16	13-3/8	1°	31/32	54.01		
SP-432L	26-1/4	24-7/8	20-3/32	13-3/4	1°	15/16	55.00		
SP-454L	26-1/2	25-1/8	20-5/16	13-31/32	1°	7/8	54.47		
SP-502L	26	24-5/8	19-31/32	13-11/16	2°	31/32	55.01		
SP-503L	26-3/4	25-3/8	20-9/16	14-9/32	2°	15/16	56.46		
SP-720L	27-1/4	25-7/8	20-13/16	14-5/8	3°	15/16	---		
SP-732L	26-3/4	25-3/8	20-5/8	14-7/16	3°	15/16	---		
SP-743L	25-3/4	24-3/8	19-15/32	13-3/16	1°	31/32	---		
SP-744L	26	24-5/8	19-3/4	13-1/2	1°	15/16	---		
SP-745L	26-1/4	24-7/8	20-1/16	13-13/16	1°	29/32	---		
SP-746L	26-3/4	25-3/8	20-13/32	14-5/32	1°	7/8	---		

METRIC CONVERSION: 1 inch=25.4mm, 1 foot=304.8mm

1	18/07/27	ADDED IMPERIAL TO METRIC CONVERSION NOTE	
No.	Date	Revision	By Approved

Standard/

**SWITCH PLATES
LEFT HAND**

Drawn RFP Checked GGS Approved *[Signature]* VP Engineering & Asset Management



Date DEC 15, 2017 Plan Number GTS-0531 Rev 1

REFERENCE: TS-531

Sheet 2 OF 2