

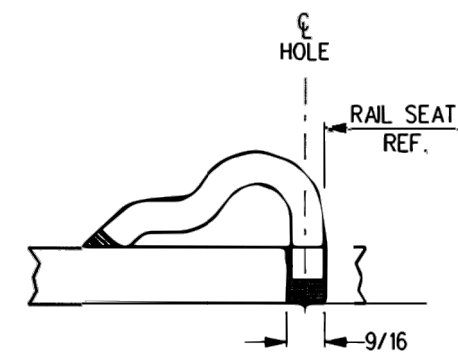
NOTES

1. WHEN REFERRING TO SWITCH PLATES, PLAN AND PLATE NUMBERS MUST BE STATED TO INDICATE SPECIFIC PLATE REQUIRED.
2. IDENTIFICATION CHARACTERS (1/2" MINIMUM HEIGHT) TO BE STAMPED ON EACH PLATE AS SHOWN.
3. ALL DIMENSIONS ARE IN INCHES.
4. UNLESS OTHERWISE SPECIFIED ALL TOLERANCES TO BE ± 1/32.

MATERIAL

PLATES TO CONFORM TO THE LATEST REVISION OF GO TRANSIT TRACK STANDARDS OR IN GENERAL WITH LATEST REVISION OF A.S.T.M. SPECIFICATION FOR COMMERCIAL QUALITY HOT ROLLED BAR STEEL A-675 CHEMICAL REQUIREMENT.

	MINIMUM	MAXIMUM
CARBON	0.15 %	0.25 %
MANGANESE	0.30 %	0.60 %
PHOSPHORUS		0.04 %
SULPHUR		0.05 %



TYPICAL PANDROL SHOULDER INSTALLATION

PLATES	A	B	C	D	E	F	G	H	WEIGHT (LBS.)	STOCK NUMBERS	
	±1/8	±1/16								NEW	PART WORN
SP-367R	27-1/4	25-7/8	21-1/16	2°	13/16	1-31/32	2-3/16	3/8	50.58		
SP-393R	27-1/2	26-1/8	21-7/16	2°	13/16	2-11/32	2-9/16	3/8	51.26		
SP-433R	26-3/4	25-3/8	20-1/2	1°	29/32	1-15/32	1-9/16	9/32	51.37		
SP-434R	27	25-5/8	20-29/32	1°	7/8	1-27/32	2	5/16	51.34		
SP-435R	27-1/2	26-1/8	21-11/32	1°	27/32	2-5/16	2-13/32	11/32	51.92		
SP-436R	28	26-5/8	21-3/4	1°	13/16	2-23/32	2-13/16	3/8	52.35		
SP-437R	28-1/2	27-1/8	22-7/32	1°	25/32	3-3/16	3-9/32	13/32	52.79		
SP-455R	27	25-5/8	20-19/32	1°	27/32	1-9/16	1-21/32	11/32	50.55		
SP-456R	27-1/2	26-1/8	20-15/16	1°	13/16	1-29/32	2	3/8	50.94		
SP-457R	27-1/2	26-1/8	21-1/4	1°	25/32	2-7/32	2-5/16	13/32	50.49		
SP-504R	27-1/4	25-7/8	21-5/32	2°	29/32	2-3/32	2-9/32	9/32	53.15		
SP-505R	28	26-5/8	21-25/32	2°	7/8	2-23/32	2-29/32	5/16	53.76		
SP-506R	28-1/2	27-1/8	22-7/16	2°	27/32	3-3/8	3-9/16	11/32	54.37		
SP-507R	29-1/4	27-7/8	23-3/32	2°	13/16	4-1/32	4-7/32	3/8	55.76		
SP-508R	30	28-5/8	23-25/32	2°	25/32	4-23/32	4-29/32	13/32	56.31		
SP-639R	28	26-5/8	21-45/64	2°	13/16	2-21/32	2-27/32	3/8	—		
SP-722R	28-1/2	27-1/8	21-7/8	3°	7/8	3-3/4	3-1/16	5/16	—		
SP-724R	29-1/2	28-1/8	23-3/32	3°	13/16	3-15/16	4-5/16	3/8	—		
SP-747R	27	25-5/8	20-25/32	1°	27/32	1-27/32	1-15/16	11/32	—		
SP-748R	27-1/2	26-1/8	21-5/32	1°	13/16	2-7/32	2-5/16	3/8	—		
SP-749R	27-3/4	26-3/8	21-9/16	1°	25/32	2-5/8	2-23/32	13/32	—		

METRIC CONVERSION: 1 inch=25.4mm, 1 foot=304.8mm

1	18/07/27	ADDED IMPERIAL TO METRIC CONVERSION NOTE	
No.	Date	Revision	By Approved

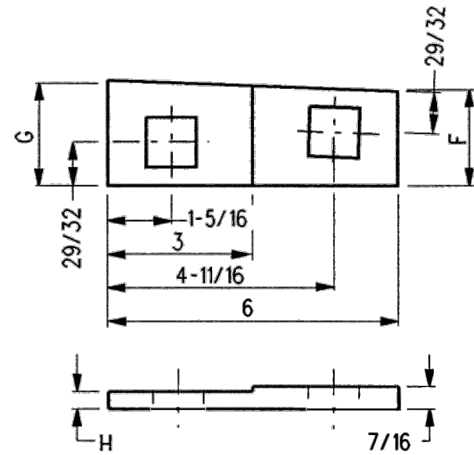
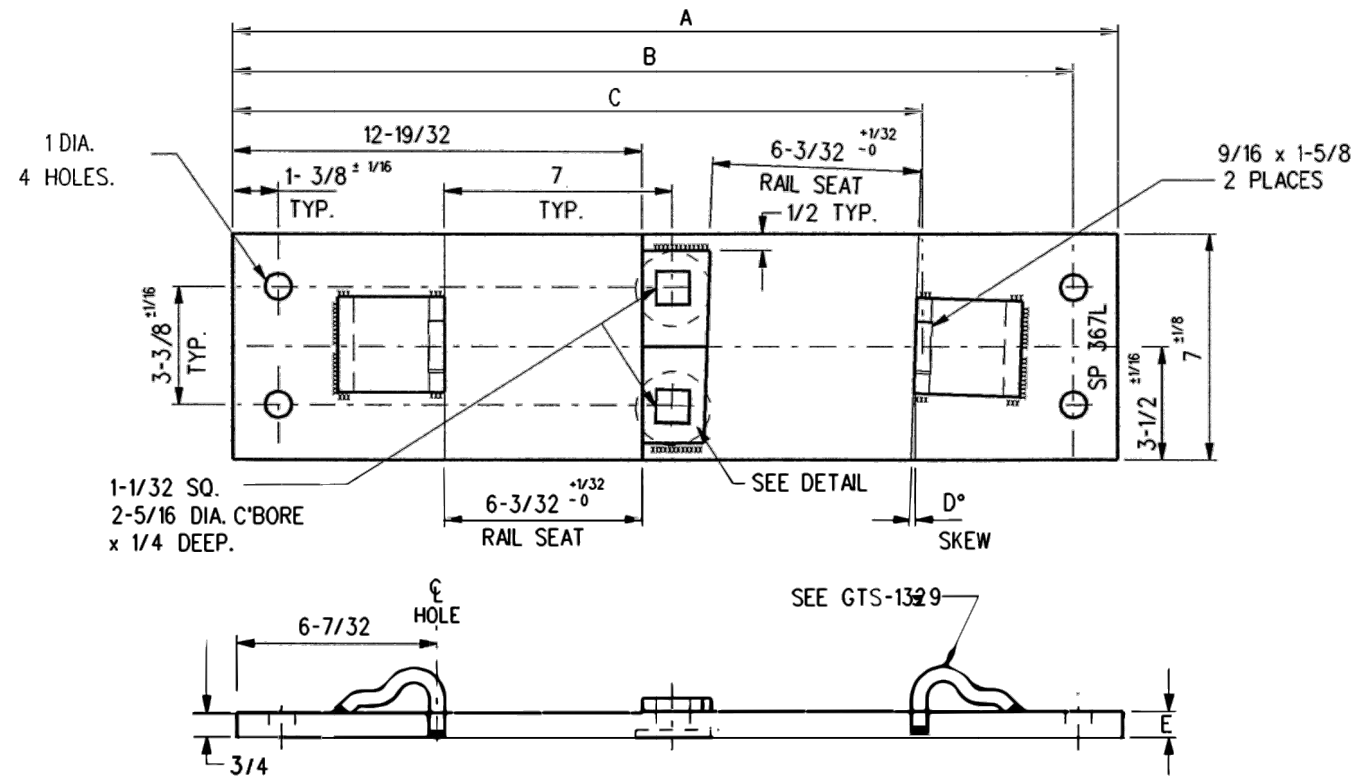
Standard / SWITCH PLATE RIGHT HAND

Drawn RFP Checked GGS Approved *[Signature]* VP Engineering & Asset Management

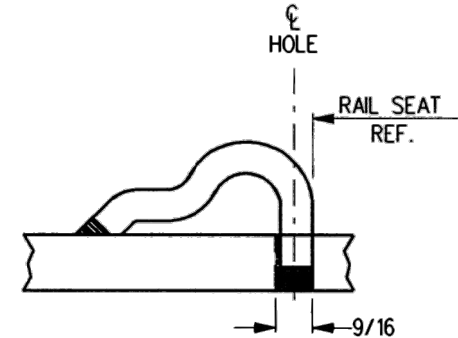
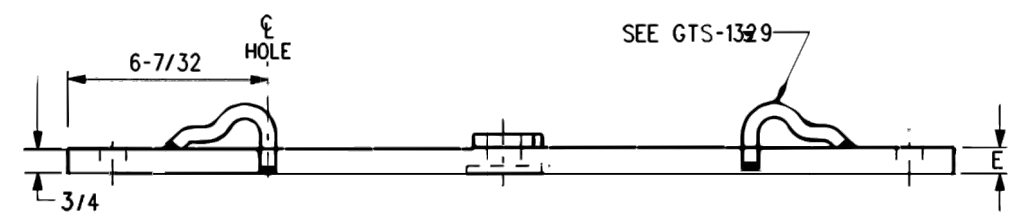


Date DEC 15, 2017 Plan Number GTS-0532 Rev 1

REFERENCE: TS-532 Sheet 1 OF 2



DETAIL



TYPICAL PANDROL SHOULDER INSTALLATION

NOTES

1. WHEN REFERRING TO SWITCH PLATES, PLAN AND PLATE NUMBERS MUST BE STATED TO INDICATE SPECIFIC PLATE REQUIRED.
2. IDENTIFICATION CHARACTERS (1/2" MINIMUM HEIGHT) TO BE STAMPED ON EACH PLATE AS SHOWN.
3. ALL DIMENSIONS ARE IN INCHES.
4. UNLESS OTHERWISE SPECIFIED ALL TOLERANCES TO BE ± 1/32.

MATERIAL

PLATES TO CONFORM TO THE LATEST REVISION OF GO TRANSIT TRACK STANDARDS OR IN GENERAL WITH LATEST REVISION OF A.S.T.M. SPECIFICATION FOR COMMERCIAL QUALITY HOT ROLLED BAR STEEL A-675 CHEMICAL REQUIREMENT.

	MINIMUM	MAXIMUM
CARBON	0.15 %	0.25 %
MANGANESE	0.30 %	0.60 %
PHOSPHORUS		0.04 %
SULPHUR		0.05 %

PLATES	A	B	C	D	E	F	G	H	WEIGHT (LBS.)	STOCK NUMBERS	
	±1/8	±1/16								NEW	PART WORN
SP-367L	27-1/4	25-7/8	21-1/16	2°	13/16	1-31/32	2-3/16	3/8	50.58		
SP-393L	27-1/2	26-1/8	21-7/16	2°	13/16	2-11/32	2-9/16	3/8	51.26		
SP-433L	26-3/4	25-3/8	20-1/2	1°	29/32	1-15/32	1-9/16	9/32	51.37		
SP-434L	27	25-5/8	20-29/32	1°	7/8	1-27/32	2	5/16	51.34		
SP-435L	27-1/2	26-1/8	21-11/32	1°	27/32	2-5/16	2-13/32	11/32	51.92		
SP-436L	28	26-5/8	21-3/4	1°	13/16	2-23/32	2-13/16	3/8	52.35		
SP-437L	28-1/2	27-1/8	22-7/32	1°	25/32	3-3/16	3-9/32	13/32	52.79		
SP-455L	27	25-5/8	20-19/32	1°	27/32	1-9/16	1-21/32	11/32	50.55		
SP-456L	27-1/2	26-1/8	20-15/16	1°	13/16	1-29/32	2	3/8	50.94		
SP-457L	27-1/2	26-1/8	21-1/4	1°	25/32	2-7/32	2-5/16	13/32	50.49		
SP-504L	27-1/4	25-7/8	21-5/32	2°	29/32	2-3/32	2-9/32	9/32	53.15		
SP-505L	28	26-5/8	21-25/32	2°	7/8	2-23/32	2-29/32	5/16	53.76		
SP-506L	28-1/2	27-1/8	22-7/16	2°	27/32	3-3/8	3-9/16	11/32	54.37		
SP-507L	29-1/4	27-7/8	23-3/32	2°	13/16	4-1/32	4-7/32	3/8	55.76		
SP-508L	30	28-5/8	23-25/32	2°	25/32	4-23/32	4-29/32	13/32	56.31		
SP-639L	28	26-5/8	21-45/64	2°	13/16	2-21/32	2-27/32	3/8	—		
SP-722L	28-1/2	27-1/8	21-7/8	3°	7/8	2-3/4	3-1/16	5/16	—		
SP-724L	29-1/2	28-1/8	23-3/32	3°	13/16	3-15/16	4-5/16	3/8	—		
SP-747L	27	25-5/8	20-25/32	1°	27/32	1-27/32	1-15/16	11/32	—		
SP-748L	27-1/2	26-1/8	21-5/32	1°	13/16	2-7/32	2-5/16	3/8	—		
SP-749L	27-3/4	26-3/8	21-9/16	1°	25/32	2-5/8	2-23/32	13/32	—		

METRIC CONVERSION: 1 inch=25.4mm, 1 foot=304.8mm

1	18/07/27	ADDED IMPERIAL TO METRIC CONVERSION NOTE	
No.	Date	Revision	By Approved
Standard/		SWITCH PLATE LEFT HAND	
Drawn	MG	Checked	GGG
		Approved	<i>[Signature]</i> VP Engineering & Asset Management



Date DEC 15, 2017 Plan Number GTS-0532 Rev 1