

TYPICAL PANDROL SHOULDER INSTALLATION

NOTES

1. WHEN REFERRING TO SWITCH PLATES, PLAN AND PLATE NUMBERS MUST BE STATED TO INDICATE SPECIFIC PLATE REQUIRED.
2. IDENTIFICATION CHARACTERS (1/2" MINIMUM HEIGHT) TO BE STAMPED ON EACH PLATE AS SHOWN.
3. ALL DIMENSIONS ARE IN INCHES.
4. UNLESS OTHERWISE SPECIFIED ALL TOLERANCES TO BE ±1/32.

MATERIAL

PLATES TO CONFORM TO THE LATEST REVISION OF GO TRANSIT TRACK STANDARDS OR IN GENERAL WITH LATEST REVISION OF A.S.T.M. SPECIFICATION FOR COMMERCIAL QUALITY HOT ROLLED BAR STEEL A-675 CHEMICAL REQUIREMENT.

	MINIMUM	MAXIMUM
CARBON	0.15 %	0.25 %
MANGANESE	0.30 %	0.60 %
PHOSPHORUS		0.04 %
SULPHUR		0.05 %

PLATES	A	B	C	D	E	F	WEIGHT (LBS)	STOCK NUMBERS	
	±1/8	±1/16						NEW	PART WORN
SP-483R	26	24-5/8	19-7/8	13-5/8	2°	15/16			
SP-484R	26-3/4	25-3/8	20-13/32	14-5/32	2°	7/8			
SP-486R	26-1/4	24-7/8	20-1/16	13-13/16	2°	15/16			
SP-487R	27	25-5/8	20-7/8	14-19/32	2°	7/8			
SP-489R	25-3/4	24-3/8	19-11/16	13-3/8	1°	31/32			
SP-490R	26-1/4	24-7/8	20-1/16	13-3/4	1°	15/16			
SP-520R	26	24-5/8	19-15/16	13-11/16	2°	31/32			
SP-521R	26-3/4	25-3/8	20-17/32	14-9/32	2°	15/16			
SP-719R	27-1/4	25-7/8	20-13/16	14 5/8	3°	15/16			
SP-731R	27	25-5/8	20-11/16	14-9/16	3°	15/16			

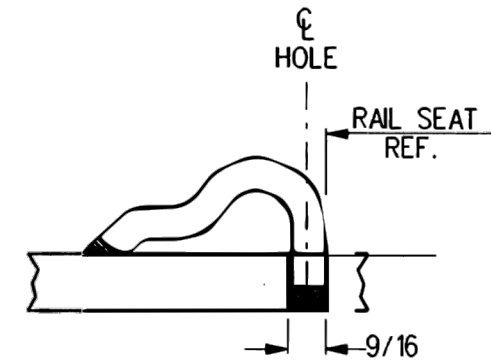
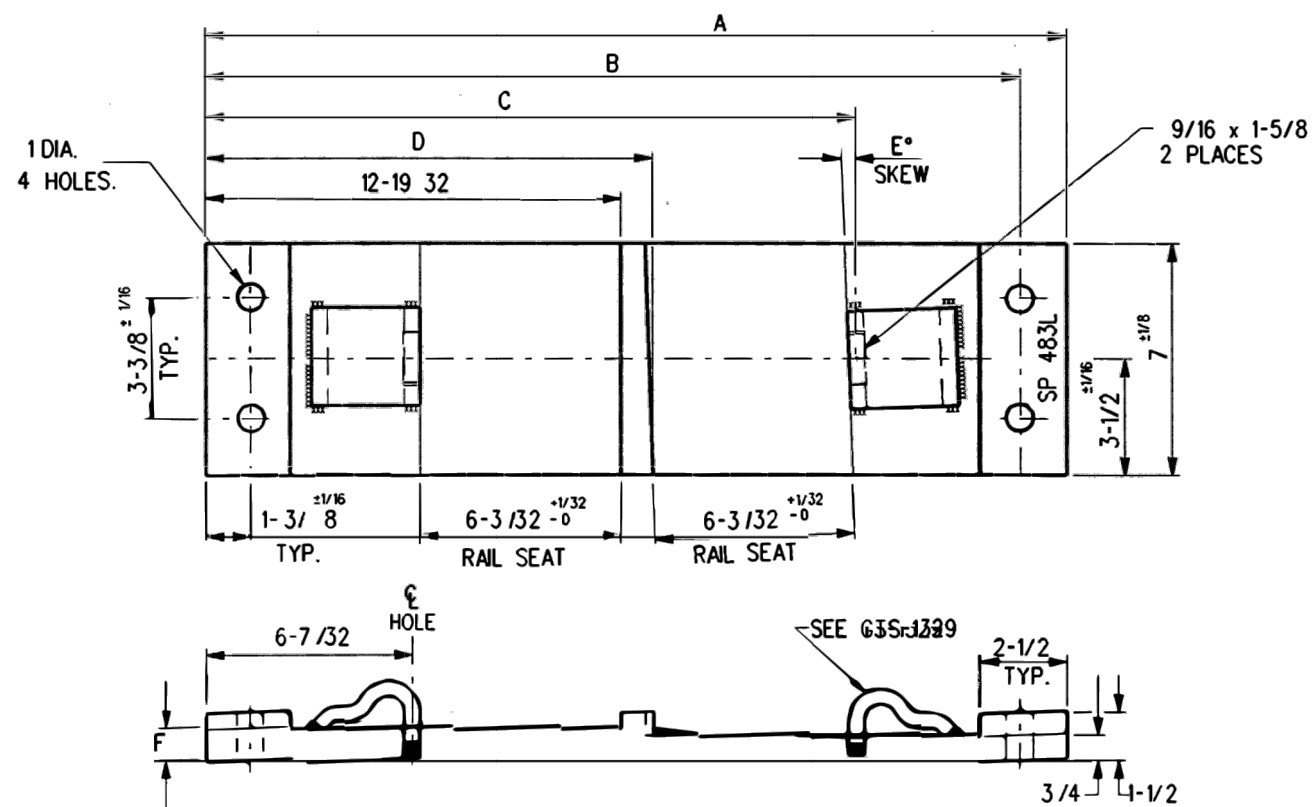
METRIC CONVERSION: 1 inch=25.4mm, 1 foot=304.8mm

1	18/07/27	ADDED IMPERIAL TO METRIC CONVERSION NOTE
No.	Date	Revision
		By Approved

Standard	SWITCH PLATE RIGHT HAND
Drawn RFP	Checked GGS
	Approved <i>[Signature]</i> VP Engineering & Asset Management



Date DEC 15, 2017	Plan Number GTS-0541	Rev 1
-------------------	----------------------	-------



TYPICAL PANDROL SHOULDER INSTALLATION

NOTES

1. WHEN REFERRING TO SWITCH PLATES, PLAN AND PLATE NUMBERS MUST BE STATED TO INDICATE SPECIFIC PLATE REQUIRED.
2. IDENTIFICATION CHARACTERS (1/2" MINIMUM HEIGHT) TO BE STAMPED ON EACH PLATE AS SHOWN.
3. ALL DIMENSIONS ARE IN INCHES.
4. UNLESS OTHERWISE SPECIFIED ALL TOLERANCES TO BE $\pm 1/32$.

MATERIAL

PLATES TO CONFORM TO THE LATEST REVISION OF GO TRANSIT TRACK STANDARDS OR IN GENERAL WITH LATEST REVISION OF A.S.T.M. SPECIFICATION FOR COMMERCIAL QUALITY HOT ROLLED BAR STEEL A-675 CHEMICAL REQUIREMENT.

	MINIMUM	MAXIMUM
CARBON	0.15 %	0.25 %
MANGANESE	0.30 %	0.60 %
PHOSPHORUS		0.04 %
SULPHUR		0.05 %

PLATES	A	B	C	D	E	F	WEIGHT (LBS)	STOCK NUMBERS	
	$\pm 1/8$	$\pm 1/16$						NEW	PART WORN
SP-483L	26	24-5/8	19-7/8	13-5/8	2°	15/16			
SP-484L	26-3/4	25-3/8	20-13/32	14-5/32	2°	7/8			
SP-486L	26-1/4	24-7/8	20-1/16	13-13/16	2°	15/16			
SP-487L	27	25-5/8	20-7/8	14-19/32	2°	7/8			
SP-489L	25-3/4	24-3/8	19-11/16	13-3/8	1°	31/32			
SP-490L	26-1/4	24-7/8	20-1/16	13-3/4	1°	15/16			
SP-520L	26	24-5/8	19-15/16	13-11/16	2°	31/32			
SP-521L	26-3/4	25-3/8	20-17/32	14-9/32	2°	15/16			
SP-719L	27-1/4	25-7/8	20-13/16	14-5/8	3°	15/16			
SP-731L	27	25-5/8	20-11/16	14-9/16	3°	15/16			

METRIC CONVERSION: 1 inch=25.4mm, 1 foot=304.8mm

1	18/07/27	ADDED IMPERIAL TO METRIC CONVERSION NOTE
No.	Date	Revision
		By Approved

Standard / SWITCH PLATE LEFT HAND

Drawn RFP Checked GGS Approved *[Signature]* VP Engineering & Asset Management



Date DEC 15, 2017 Plan Number GTS-0541 Rev 1