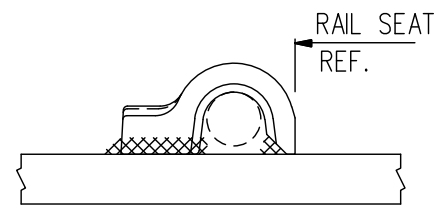


STAGGERED SHOULDER PLACEMENT
USED ONLY ON PLATES WITH TOTAL LENGTH BELOW 30-3/4"



PANDROL SHOULDER DETAIL

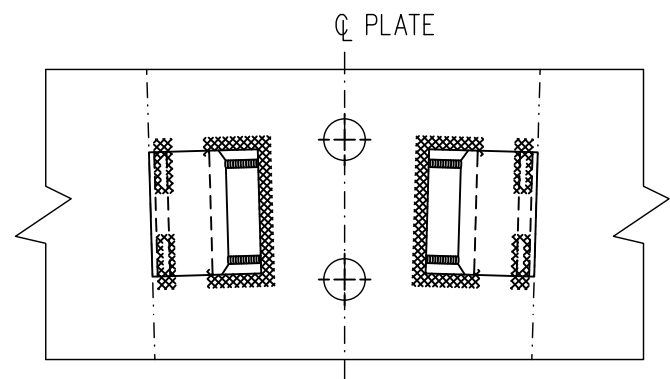
NOTES

1. WHEN REFERRING TO SWITCH PLATES, PLAN AND PLATE NUMBERS MUST BE STATED TO INDICATE SPECIFIC PLATE REQUIRED.
2. IDENTIFICATION CHARACTERS (1/2" MINIMUM HEIGHT) TO BE STAMPED ON EACH PLATE AS SHOWN.
3. ALL DIMENSIONS ARE IN INCHES.
4. UNLESS OTHERWISE SPECIFIED ALL TOLERANCES TO BE $\pm 1/32$.
5. TOLERANCES ARE NOT TO EXCEED THOSE INDICATED IN THE GO TOLERANCE DRAWINGS.

MATERIAL

PLATES TO CONFORM TO THE LATEST REVISION OF A.S.T.M. SPECIFICATION A-36 FOR COMMERCIAL QUALITY HOT ROLLED BAR STEEL CHEMICAL REQUIREMENT.

	MINIMUM	MAXIMUM
CARBON	0.25 %	0.29 %
MANGANESE	0.60 %	1.20 %
PHOSPHORUS		0.04 %
SULPHUR		0.05 %
SILICON		0.40 %



CENTRE HOLE PLACEMENT
USED ON ALL PLATES WITH TOTAL LENGTH ABOVE 33-1/2"

PLATES	A $\pm 1/8$	B $\pm 1/16$	C $\pm 1/32$	D	E	WEIGHT (LBS.)	REPLACED BY	
							MARK No.	GTS DWG.
SP-188	29-3/4	28-3/8	23-23/32	1°	1°	50.0		
SP-189	30-7/16	29-1/16	24-7/16	1°	1°	51.0		
SP-190	31-3/16	29-13/16	25-3/16	1°	1°	52.0		
SP-191	31-15/16	30-9/16	25-15/16	1°	1°	53.0		
SP-192	32-3/4	31-3/8	26-23/32	1°	1°	54.0		
SP-193	33-9/16	32-3/16	27-17/32	1°	1°	55.0		
SP-194	34-3/8	33	28-3/8	1°	1°	57.0		
SP-195	35-3/16	33-13/16	28-3/8	1°	1°	58.0		
SP-570	29-5/8	28-1/4	23-5/8	1°	1°	50		
SP-571	30-17/32	29-5/32	24-17/32	1°	1°	51		
SP-572	31-1/2	30-1/8	25-1/2	1°	1°	52		
SP-573	32-1/2	31-1/8	26-15/32	1°	1°	54		
SP-574	33-1/2	32-1/8	27-1/2	1°	1°	55		
SP-575	34-9/16	33-3/16	28-17/32	1°	1°	57		
SP-587	29-7/32	27-27/32	23-7/32	1°	1°	49.2		
SP-588	30-7/32	28-27/32	24-7/32	2°	2°	50.7		
SP-589	31-1/4	29-7/8	25-1/4	2°	2°	52.3		
SP-590	32-7/16	31-1/16	26-7/16	2°	2°	54.0		
SP-591	33-11/16	32-5/16	27-11/16	2°	2°	55.6		
SP-592	35	33-5/8	29	2°	2°	57.5		
SP-627	30	28-5/8	24	1°	1°	50.3		
SP-628	30-17/32	29-5/32	24-15/32	1°	1°	51.1		
SP-629	31-1/32	29-21/32	25	1°	1°	51.8		
SP-630	31-9/16	30-3/16	25-1/2	1°	1°	52.6		
SP-631	32-1/8	30-3/4	26-1/16	1°	1°	53.5		
SP-632	32-21/32	31-9/32	26-19/32	1°	1°	54.2		
SP-633	33-7/32	31-27/32	27-5/32	1°	1°	55.1		
SP-634	33-25/32	32-13/32	27-23/32	1°	1°	56.0		
SP-635	34-31/32	33-19/32	28-29/32	1°	1°	57.7		
SP-636	34-3/8	33	28-9/32	1°	1°	56.8		
SP-852	30-1/2	29-1/8	24-11/32	1°	1°	54.0		
SP-853	31-1/4	29-7/8	25-3/32	1°	1°	55.0		
SP-854	32	30-5/8	25-29/32	1°	1°	56.0		
SP-855	32-3/4	31-3/8	26-23/32	1°	1°	57.0		
SP-856	33-3/4	32-3/8	27-9/16	1°	1°	59.0		
SP-857	34-1/2	33-1/8	28-3/8	1°	1°	60.0		
SP-858	35-1/4	33-7/8	29-1/4	1°	1°	61.0		

METRIC CONVERSION: 1 inch=25.4mm, 1 foot=304.8mm

1	18/07/27	ADDED IMPERIAL TO METRIC CONVERSION NOTE
No.	Date	Revision
		By Approved

Standard/ **SWITCH PLATES**

Drawn PCV Checked DL Approved *DL*
VP Engineering & Asset Management



Date SEPT 15/2017 Plan Number GTS-0560 Rev 1