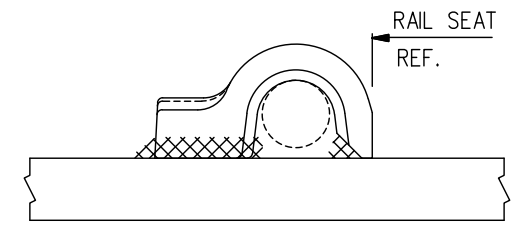


DETAIL



PANDROL SHOULDER DETAIL

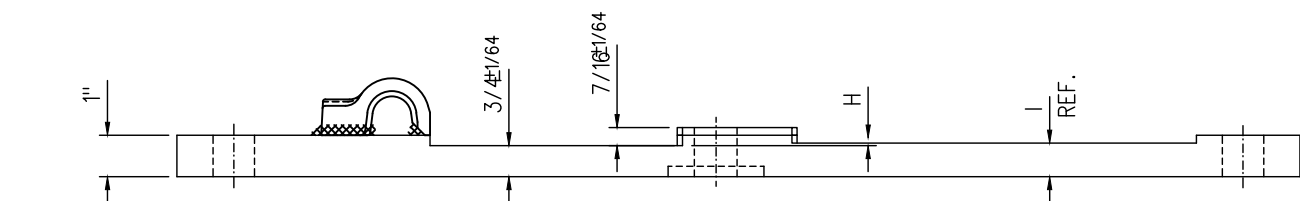
**NOTES**

1. WHEN REFERRING TO SWITCH PLATES, PLAN AND PLATE NUMBERS MUST BE STATED TO INDICATE SPECIFIC PLATE REQUIRED.
2. IDENTIFICATION CHARACTERS (1/2" MINIMUM HEIGHT) TO BE STAMPED ON EACH PLATE AS SHOWN.
3. ALL DIMENSIONS ARE IN INCHES.
4. UNLESS OTHERWISE SPECIFIED ALL TOLERANCES TO BE ±1/32.
5. TOLERANCES ARE NOT TO EXCEED THOSE INDICATED IN THE GO TOLERANCE DRAWINGS.

**MATERIAL**

PLATES TO CONFORM TO THE LATEST REVISION OF A.S.T.M. SPECIFICATION A-36 FOR COMMERCIAL QUALITY HOT ROLLED BAR STEEL CHEMICAL REQUIREMENT.

	MINIMUM	MAXIMUM
CARBON	0.25 %	0.29 %
MANGANESE	0.60 %	1.20 %
PHOSPHORUS		0.04 %
SULPHUR		0.05 %
SILICON		0.40 %



PLATES	A	B	C	D	E	F	G	H	I	WEIGHT (LBS.)	REPLACED BY	
	±1/8	±1/16	±1/32			±1/32	±1/32	±1/128	±1/32		MARK No.	GTS DWG.
SP-802L	25	23-5/8	12-3/32	1°	1°	1-31/32	2-9/32	1/8	7/8	45.4		
SP-803L	25-1/2	24-1/8	12-3/32	1°	1°	2-27/32	3-5/32	1/16	13/16	45.7		
SP-813L	27-1/8	25-3/4	12-3/32	1°	1°	2-21/32	2-29/32	1/16	13/16	54.0		
SP-824L	24-3/4	23-3/8	12-3/32	1°	1°	2	2-3/16	5/32	29/32	47.0		
SP-825L	25	23-5/8	12-3/32	1°	1°	2-5/8	2-13/16	1/8	7/8	48.0		
SP-826L	25-1/2	24-1/8	12-3/32	1°	1°	3-9/32	3-15/32	3/32	27/32	49.0		

**METRIC CONVERSION: 1 inch=25.4mm, 1 foot=304.8mm**

1	18/07/27	ADDED IMPERIAL TO METRIC CONVERSION NOTE
No.	Date	Revision
		By Approved

Standard / **SWITCH PLATES**

Drawn PCV Checked DL Approved *DL*  
VP Engineering & Asset Management



Date SEPT 15/2017 Plan Number GTS-0586 Rev 1