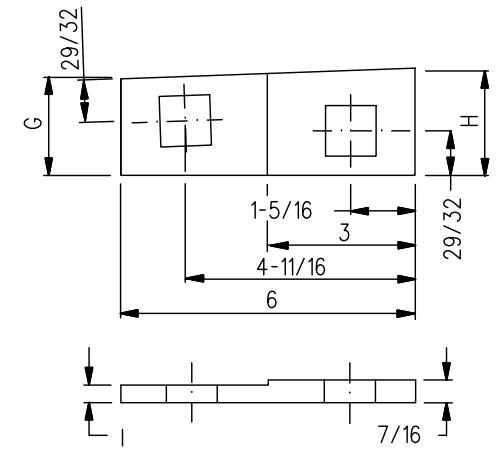
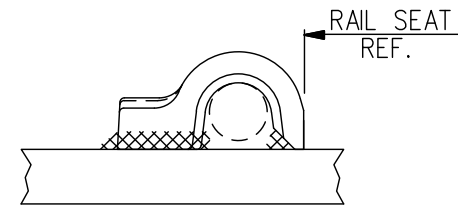


PANDROL SHOULDER DETAIL



DETAIL

NOTES

1. WHEN REFERRING TO SWITCH PLATES, PLAN AND PLATE NUMBERS MUST BE STATED TO INDICATE SPECIFIC PLATE REQUIRED.
2. IDENTIFICATION CHARACTERS (1/2" MINIMUM HEIGHT) TO BE STAMPED ON EACH PLATE AS SHOWN.
3. ALL DIMENSIONS ARE IN INCHES.
4. UNLESS OTHERWISE SPECIFIED ALL TOLERANCES TO BE $\pm 1/32$.
5. TOLERANCES ARE NOT TO EXCEED THOSE INDICATED IN THE GO TOLERANCE DRAWINGS.

MATERIAL

PLATES TO CONFORM TO THE LATEST REVISION OF A.S.T.M. SPECIFICATION A-36 FOR COMMERCIAL QUALITY HOT ROLLED BAR STEEL CHEMICAL REQUIREMENT.

| | MINIMUM | MAXIMUM |
|------------|---------|---------|
| CARBON | 0.25 % | 0.29 % |
| MANGANESE | 0.60 % | 1.20 % |
| PHOSPHORUS | | 0.04 % |
| SULPHUR | | 0.05 % |
| SILICON | | 0.40 % |

| PLATES | A | B | C | D | E | F | G | H | I | WEIGHT (LBS.) | REPLACED BY | |
|---------|-----------|------------|----------|----------|----|-------|---------|---------|-------|---------------|-------------|------------|
| | $\pm 1/8$ | $\pm 1/16$ | | | | | | | | | MARK No. | GTS DWG. |
| SP 184L | 29 1/4 | 27 7/8 | 22 37/64 | 16 1/2 | 2° | 13/16 | 3 29/32 | 4 1/8 | 3/8 | | SP827L | GTS-0587/4 |
| SP 186L | 30 | 28 5/8 | 23 17/64 | 17 3/16 | 2° | 25/32 | 4 19/32 | 4 13/16 | 13/32 | | SP828L | GTS-0587/4 |
| SP 621L | 28 1/4 | 26 7/8 | 21 57/64 | 15 25/32 | 1° | 25/32 | 3 3/16 | 3 5/16 | 13/32 | | SP844L | GTS-0587/4 |

METRIC CONVERSION: 1 inch=25.4mm, 1 foot=304.8mm

| | | | |
|-----|----------|--|-------------|
| 1 | 18/07/27 | ADDED IMPERIAL TO METRIC CONVERSION NOTE | |
| No. | Date | Revision | By Approved |

Standard / **SWITCH PLATES LEFT HAND**

Drawn MG Checked GGS Approved *[Signature]* VP Engineering & Asset Management



Date SEPT 15/2017 Plan Number GTS-0594 Rev 1