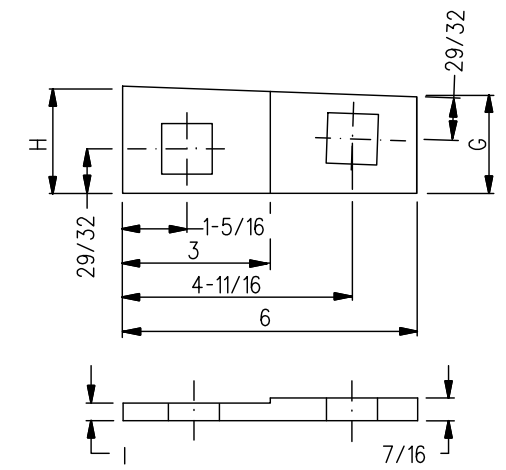
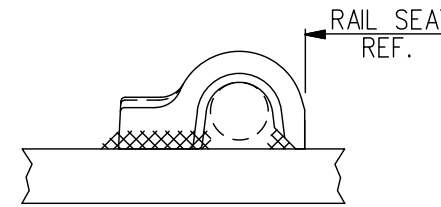


PANDROL SHOULDER DETAIL



DETAIL

NOTES

1. WHEN REFERRING TO SWITCH PLATES, PLAN AND PLATE NUMBERS MUST BE STATED TO INDICATE SPECIFIC PLATE REQUIRED.
2. IDENTIFICATION CHARACTERS (1/2" MINIMUM HEIGHT) TO BE STAMPED ON EACH PLATE AS SHOWN.
3. ALL DIMENSIONS ARE IN INCHES.
4. UNLESS OTHERWISE SPECIFIED ALL TOLERANCES TO BE $\pm 1/32$.
5. TOLERANCES ARE NOT TO EXCEED THOSE INDICATED IN THE GO TOLERANCE DRAWINGS.

MATERIAL

PLATES TO CONFORM TO THE LATEST REVISION OF A.S.T.M. SPECIFICATION A-36 FOR COMMERCIAL QUALITY HOT ROLLED BAR STEEL CHEMICAL REQUIREMENT.

	MINIMUM	MAXIMUM
CARBON	0.25 %	0.29 %
MANGANESE	0.60 %	1.20 %
PHOSPHORUS		0.04 %
SULPHUR		0.05 %
SILICON		0.40 %

PLATES	A	B	C	D	E	F	G	H	I	WEIGHT (LBS.)	REPLACED BY	
	$\pm 1/8$	$\pm 1/16$									MARK No.	GTS DWG.
SP-185L	29 1/4	27 7/8	22 53/64	16 1/2	2°	13/16	3 29/32	4 1/8	3/8		SP827L	GTS-0587/4
SP-187L	30	28 5/8	23 33/64	17 3/16	2°	25/32	4 19/32	4 13/16	13/32		SP828L	GTS-0587/4
SP-622L	28 1/4	26 7/8	22 1/64	15 25/32	1°	25/32	3 3/16	3 5/16	13/32		SP844L	GTS-0587/4

METRIC CONVERSION: 1 inch=25.4mm, 1 foot=304.8mm

1	18/07/27	ADDED IMPERIAL TO METRIC CONVERSION NOTE
No.	Date	Revision
		By Approved

Standard / **SWITCH PLATES LEFT HAND**

Drawn MG Checked GGS Approved *[Signature]*
VP Engineering & Asset Management



Date SEPT 15/2017 Plan Number GTS-0595 Rev 1