

### NOTES

1. WHEN REFERRING TO SWITCH PLATES, PLAN AND PLATE NUMBERS MUST BE STATED TO INDICATE SPECIFIC PLATE REQUIRED.
2. IDENTIFICATION CHARACTERS (1/2" MINIMUM HEIGHT) TO BE STAMPED ON EACH PLATE AS SHOWN.
3. ALL DIMENSIONS ARE IN INCHES.
4. UNLESS OTHERWISE SPECIFIED ALL TOLERANCES TO BE ±1/32.

### MATERIAL

PLATES TO CONFORM TO THE LATEST REVISION OF GO TRANSIT TRACK STANDARDS OR IN GENERAL WITH LATEST REVISION OF A.S.T.M. SPECIFICATION FOR COMMERCIAL QUALITY HOT ROLLED BAR STEEL A-675 CHEMICAL REQUIREMENT.

	MINIMUM	MAXIMUM
CARBON	0.15 %	0.25 %
MANGANESE	0.30 %	0.60 %
PHOSPHORUS		0.04 %
SULPHUR		0.05 %

PLATES	A	B	C	D	E	WEIGHT (LBS.)	STOCK NUMBERS	
	±1/16		+0 -1/32				NEW	PART WORN
SP-595R	19-1/4	17-7/8	9-43/64	2"	15/16			
SP-597R	19-3/4	18-3/8	10-13/32	2"	7/8			
SP-599R	20-1/4	18-7/8	11-11/64	2"	13/16			
SP-647R	19	17-5/8	9-3/4	2"	15/16			
SP-649R	19-3/4	18-3/8	10-9/16	2"	7/8			
SP-651R	20-1/2	19-1/8	11-27/64	2"	13/16			

METRIC CONVERSION: 1 inch=25.4mm, 1 foot=304.8mm

1	18/07/27	ADDED IMPERIAL TO METRIC CONVERSION NOTE
No.	Date	Revision
		By Approved

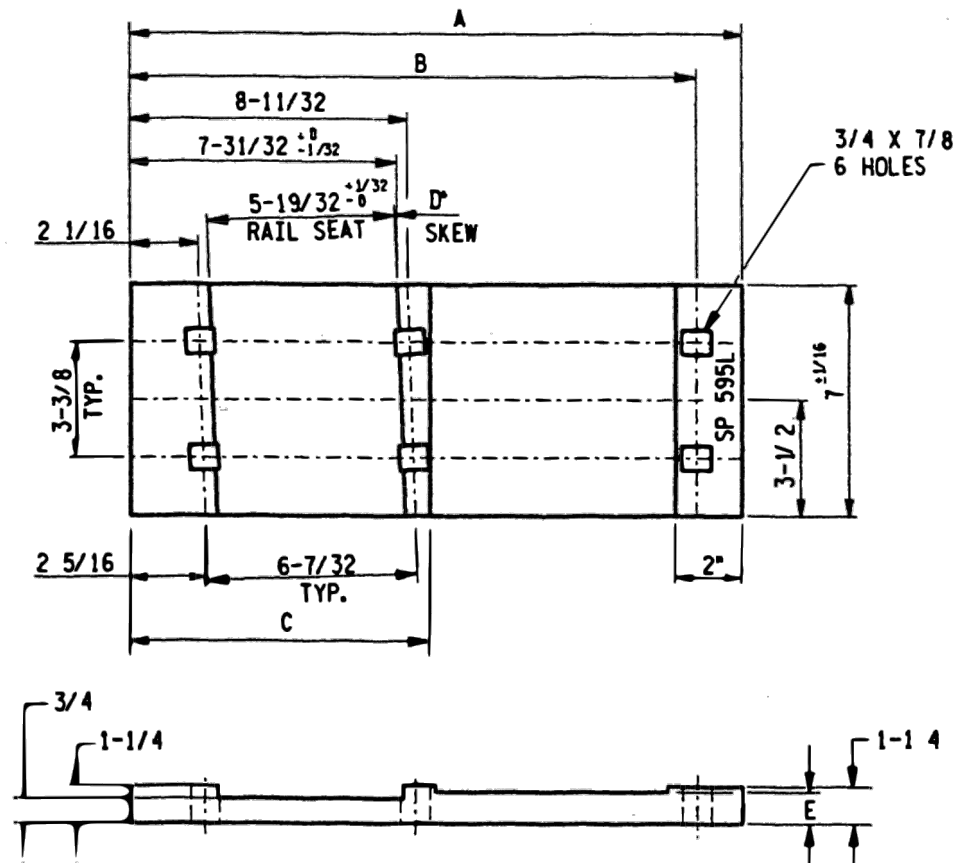
Standard / SWITCH PLATE  
RIGHT HAND

Drawn MG Checked GGS Approved *[Signature]*  
VP Engineering & Asset Management



Date DEC 15, 2017 Plan Number GTS-0613 Rev 1

REFERENCE: TS-613 Sheet 1 OF 2



**NOTES**

1. WHEN REFERRING TO SWITCH PLATES, PLAN AND PLATE NUMBERS MUST BE STATED TO INDICATE SPECIFIC PLATE REQUIRED.
2. IDENTIFICATION CHARACTERS (1/2" MINIMUM HEIGHT) TO BE STAMPED ON EACH PLATE AS SHOWN.
3. ALL DIMENSIONS ARE IN INCHES.
4. UNLESS OTHERWISE SPECIFIED ALL TOLERANCES TO BE ± 1/32.

**MATERIAL**

PLATES TO CONFORM TO THE LATEST REVISION OF GO TRANSIT TRACK STANDARDS OR IN GENERAL WITH LATEST REVISION OF A.S.T.M. SPECIFICATION FOR COMMERCIAL QUALITY HOT ROLLED BAR STEEL A-675 CHEMICAL REQUIREMENT.

	MINIMUM	MAXIMUM
CARBON	0.15 %	0.25 %
MANGANESE	0.30 %	0.60 %
PHOSPHORUS		0.04 %
SULPHUR		0.05 %

PLATES	A ± 1/16	B	C +0 -1/32	D	E	WEIGHT (LBS.)	STOCK NUMBERS	
							NEW	PART WORN
SP-595L	19-1/4	17-7/8	9-43/64	2"	15/16			
SP-597L	19-3/4	18-3/8	10-13/32	2"	7/8			
SP-599L	20-1/4	18-7/8	11-11/64	2"	13/16			
SP-647L	19	17-5/8	9-3/4	2"	15/16			
SP-649L	19-3/4	18-3/8	10-9/16	2"	7/8			
SP-651L	20-1/2	19-1/8	11-27/64	2"	13/16			

METRIC CONVERSION: 1 inch=25.4mm, 1 foot=304.8mm

1	18/07/27	ADDED IMPERIAL TO METRIC CONVERSION NOTE
No.	Date	Revision
		By Approved

Standard / SWITCH PLATE LEFT HAND

Drawn MG Checked GGS Approved *[Signature]*  
VP Engineering & Asset Management



Date DEC 15, 2017 Plan Number GTS-0613 Rev 1

REFERENCE: TS-613 Sheet 2 OF 2