

NOTES

1. WHEN REFERRING TO SWITCH PLATES, PLAN AND PLATE NUMBERS MUST BE STATED TO INDICATE SPECIFIC PLATE REQUIRED.
2. IDENTIFICATION CHARACTERS (1/2" MINIMUM HEIGHT) TO BE STAMPED ON EACH PLATE AS SHOWN.
3. ALL DIMENSIONS ARE IN INCHES.
4. UNLESS OTHERWISE SPECIFIED ALL TOLERANCES TO BE ±1/32.

MATERIAL

PLATES TO CONFORM TO THE LATEST REVISION OF GO TRANSIT TRACK STANDARDS OR IN GENERAL WITH LATEST REVISION OF A.S.T.M. SPECIFICATION FOR COMMERCIAL QUALITY HOT ROLLED BAR STEEL A-675 CHEMICAL REQUIREMENT.

	MINIMUM	MAXIMUM
CARBON	0.15 %	0.25 %
MANGANESE	0.30 %	0.60 %
PHOSPHORUS		0.04 %
SULPHUR		0.05 %

PLATES	A ±1/16	B	C + 1/32" - 0	D	WEIGHT (LBS.)	STOCK NUMBERS		PLATES	A ±1/16	B	C + 1/32" - 0	D	WEIGHT (LBS.)	STOCK NUMBERS	
						NEW	PART WORN							NEW	PART WORN
SP-601R	20-3/4	11-21/32	12-1/32	2°				SP-706R	21-1/4	12-7/8	13-3/16	2°			
SP-602R	21	12-31/64	12-51/64	2°				SP-707R	22	13-41/64	13-61/64	2°			
SP-603R	22	13-11/32	13-21/32	2°				SP-708R	22-3/4	14-27/64	14-47/64	2°			
SP-604R	23	14-15/64	14-35/64	2°				SP-710R	23 1/2	15-9/16	15-1/4	2°			
SP-605R	23-3/4	15-5/32	15-15/32	2°											
SP-606R	24-3/4	16-1/8	16-7/16	2°											
SP-607R	25-3/4	17-7/64	17-27/64	2°											
SP-653R	21	12	12-5/16	2°											
SP-654R	22	12-15/16	13-1/4	2°											
SP-655R	23	13-29/32	14-7/32	2°											
SP-656R	24	14-59/64	15-15/64	3°											
SP-657R	25-1/4	16-3/32	16-13/32	3°											
SP-696R	20-3/4	11-25/32	12-3/32	3°											
SP-697R	22	12-25/32	13-3/32	3°											
SP-698R	23	13-27/32	14-5/32	3°											
SP-699R	20-1/4	11-7/32	11-17/32	2°											
SP-700R	21-3/4	12-47/64	13-3/64	2°											
SP-701R	22-3/4	13-37/64	13-57/64	2°											
SP-702R	23-1/2	14-15/32	14-25/32	2°											
SP-703R	19	10-53/64	11-9/64	2°											
SP-704R	19-3/4	11-15/32	11-25/32	2°											
SP-705R	20	12-5/32	12-15/32	2°											

METRIC CONVERSION: 1 inch=25.4mm, 1 foot=304.8mm

1	18/07/27	ADDED IMPERIAL TO METRIC CONVERSION NOTE	
No.	Date	Revision	By Approved
Standard/		SWITCH PLATES RIGHT HAND	
Drawn	MG	Checked	GGG
		Approved	<i>[Signature]</i> VP Engineering & Asset Management

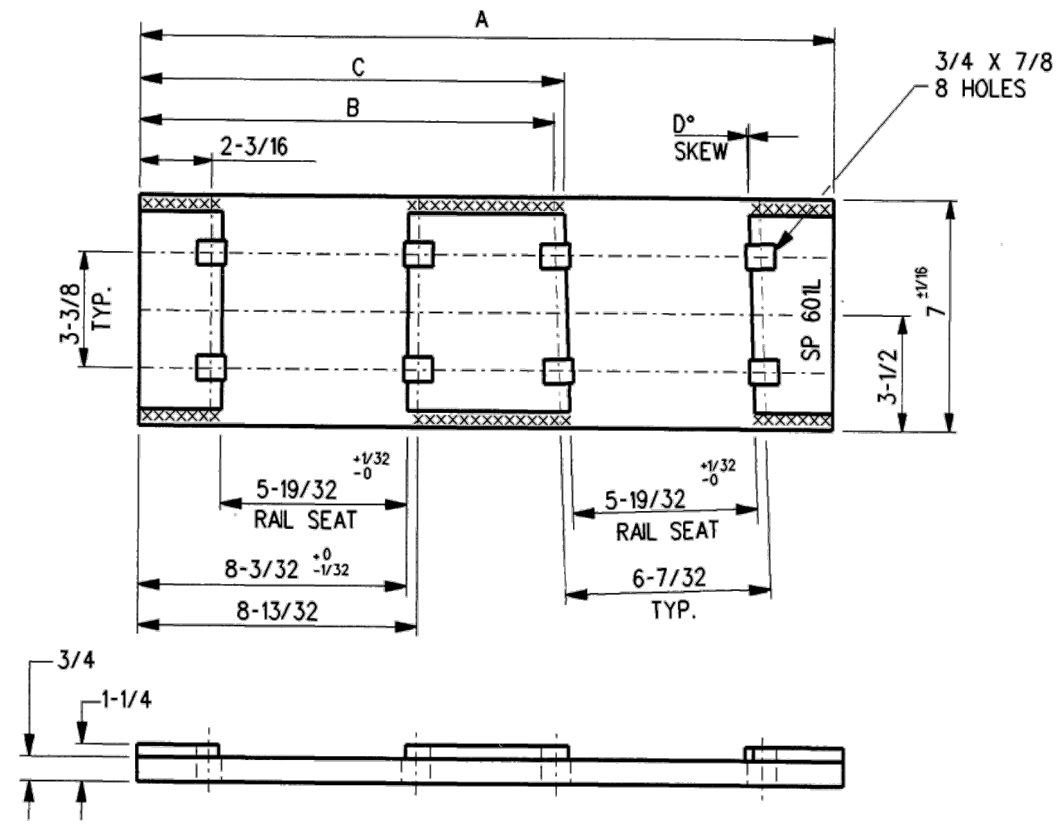


METROLINX

Date DEC 15, 2017 Plan Number GTS-0616 Rev 1

REFERENCE: TS-616

Sheet 1 OF 2



NOTES

1. WHEN REFERRING TO SWITCH PLATES, PLAN AND PLATE NUMBERS MUST BE STATED TO INDICATE SPECIFIC PLATE REQUIRED.
2. IDENTIFICATION CHARACTERS (1/2" MINIMUM HEIGHT) TO BE STAMPED ON EACH PLATE AS SHOWN.
3. ALL DIMENSIONS ARE IN INCHES.
4. UNLESS OTHERWISE SPECIFIED ALL TOLERANCES TO BE ±1/32.

MATERIAL

PLATES TO CONFORM TO THE LATEST REVISION OF GO TRANSIT TRACK STANDARDS OR IN GENERAL WITH LATEST REVISION OF A.S.T.M. SPECIFICATION FOR COMMERCIAL QUALITY HOT ROLLED BAR STEEL A-675 CHEMICAL REQUIREMENT.

	MINIMUM	MAXIMUM
CARBON	0.15 %	0.25 %
MANGANESE	0.30 %	0.60 %
PHOSPHORUS		0.04 %
SULPHUR		0.05 %

PLATES	A ±1/16	B	C +1/32 -0	D	WEIGHT (LBS.)	STOCK NUMBERS		PLATES	A ±1/16	B	C + 1/32" - 0	D	WEIGHT (LBS.)	STOCK NUMBERS	
						NEW	PART WORN							NEW	PART WORN
SP-601L	20-3/4	11-21/32	12-1/32	2°				SP-706L	21-1/4	12-7/8	13-3/16	2°			
SP-602L	21	12-31/64	12-51/64	2°				SP-707L	22	13-41/64	13-61/64	2°			
SP-603L	22	13-11/32	13-21/32	2°				SP-708L	22-3/4	14-27/64	14-47/64	2°			
SP-604L	23	14-15/64	14-35/64	2°				SP-710L	23 1/2	15-9/16	15-1/4	2°			
SP-605L	23-3/4	15-5/32	15-15/32	2°											
SP-606L	24-3/4	16-1/8	16-7/16	2°											
SP-607L	25-3/4	17-7/64	17-27/64	2°											
SP-653L	21	12	12-5/16	2°											
SP-654L	22	12-15/16	13-1/4	2°											
SP-655L	23	13-29/32	14-7/32	2°											
SP-656L	24	14-59/64	15-15/64	3°											
SP-657L	25-1/4	16-3/32	16-13/32	3°											
SP-696L	20-3/4	11-25/32	12-3/32	3°											
SP-697L	22	12-25/32	13-3/32	3°											
SP-698L	23	13-27/32	14-5/32	3°											
SP-699L	20-1/4	11-7/32	11-17/32	2°											
SP-700L	21-3/4	12-47/64	13-3/64	2°											
SP-701L	22-3/4	13-37/64	13-57/64	2°											
SP-702L	23-1/2	14-15/32	14-25/32	2°											
SP-703L	19	10-53/64	11-9/64	2°											
SP-704L	19-3/4	11-15/32	11-25/32	2°											
SP-705L	20	12-5/32	12-15/32	2°											

METRIC CONVERSION: 1 inch=25.4mm, 1 foot=304.8mm

1	18/07/27	ADDED IMPERIAL TO METRIC CONVERSION NOTE
No.	Date	Revision
		By Approved

Standard / **SWITCH PLATES LEFT HAND**

Drawn MG Checked GGS Approved *[Signature]*
VP Engineering & Asset Management



METROLINX

Date DEC 15, 2017 Plan Number GTS-0616 Rev 1