

TYPICAL PANDROL SHOULDER INSTALLATION

NOTES

1. WHEN REFERRING TO SWITCH PLATES, PLAN AND PLATE NUMBERS MUST BE STATED TO INDICATE SPECIFIC PLATE REQUIRED.
2. IDENTIFICATION CHARACTERS (1/2 "MINIMUM HEIGHT) TO BE STAMPED ON EACH PLATE AS SHOWN.
3. ALL DIMENSIONS ARE IN INCHES.
4. UNLESS OTHERWISE SPECIFIED ALL TOLERANCES TO BE $\pm 1/32$.

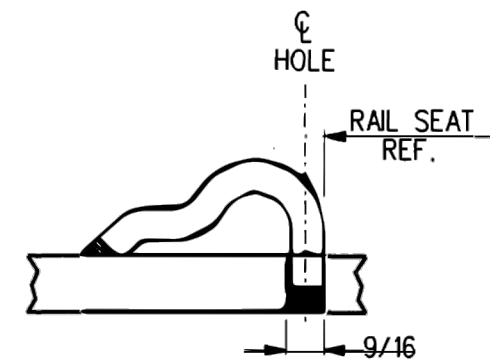
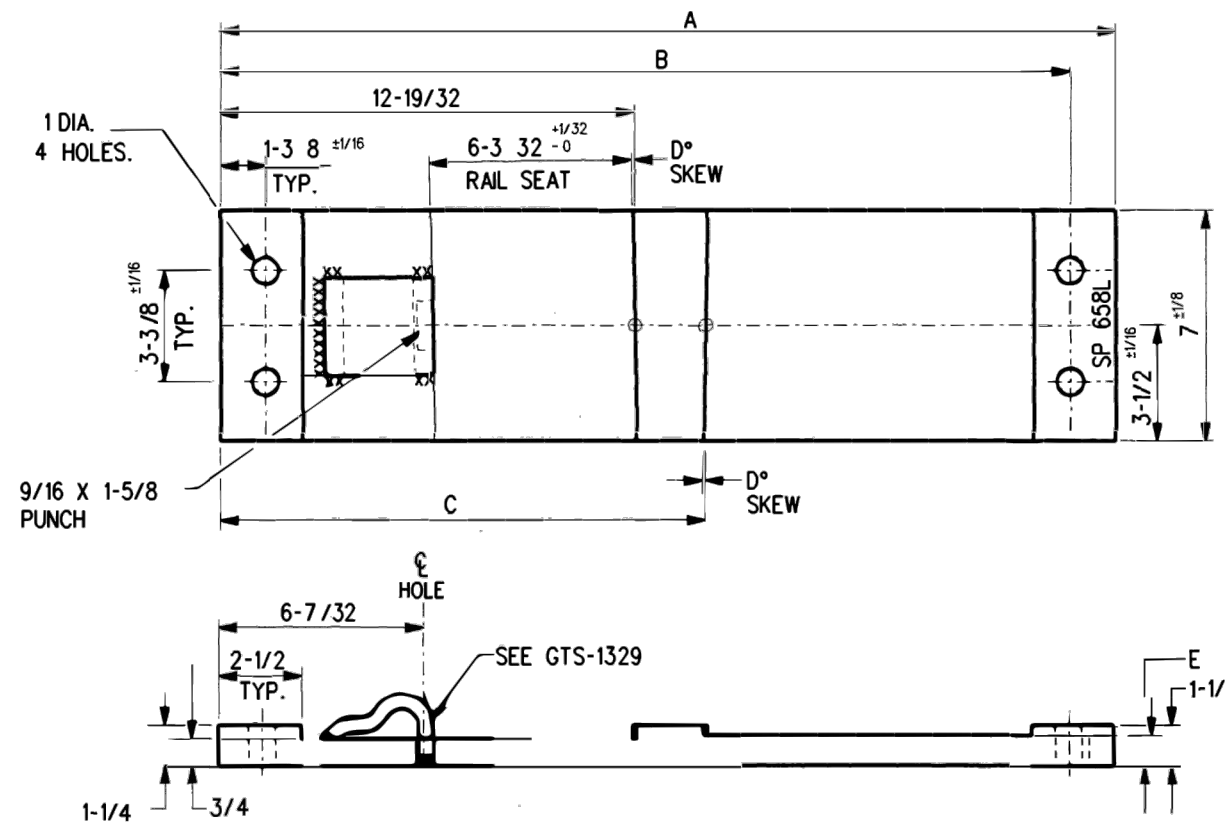
MATERIAL

PLATES TO CONFORM TO THE LATEST REVISION OF GO TRANSIT TRACK STANDARDS OR IN GENERAL WITH LATEST REVISION OF A.S.T.M. SPECIFICATION FOR COMMERCIAL QUALITY HOT ROLLED BAR STEEL A-675 CHEMICAL REQUIREMENT.

	MINIMUM	MAXIMUM
CARBON	0.15 %	0.25 %
MANGANESE	0.30 %	0.60 %
PHOSPHORUS		0.04 %
SULPHUR		0.05 %

PLATES	A	B	C	D	E	WEIGHT (LBS.)	STOCK NUMBERS	
	$\pm 1/8$	$\pm 1/16$					NEW	PART WORN
SP-658R	24	22-5/8	13-1/4	5°	31/32			
SP-659R	24-1/4	22-7/8	13-39/64	5°	15/16			
SP-660R	24-1/2	23-1/8	13-31/32	5°	29/32			

0	17/12/15	REVISED PDF VERSION ESTABLISHED	
No.	Date	Revision	By Approved
Standard		FOR EQUILATERAL TURNOUT SWITCH PLATES RIGHT HAND	
Drawn	MG	Checked	RP
		Approved	<i>[Signature]</i> VP Corridor Infrastructure
Date	DEC 15, 2017	Plan Number	GTS-0639
		Rev	0
REFERENCE: TS-639			Sheet 1 OF 2



TYPICAL PANDROL SHOULDER INSTALLATION

NOTES

1. WHEN REFERRING TO SWITCH PLATES, PLAN AND PLATE NUMBERS MUST BE STATED TO INDICATE SPECIFIC PLATE REQUIRED.
2. IDENTIFICATION CHARACTERS (1/2" MINIMUM HEIGHT) TO BE STAMPED ON EACH PLATE AS SHOWN.
3. ALL DIMENSIONS ARE IN INCHES.
4. UNLESS OTHERWISE SPECIFIED ALL TOLERANCES TO BE $\pm 1/32$

MATERIAL

PLATES TO CONFORM TO THE LATEST REVISION OF GO TRANSIT TRACK STANDARDS OR IN GENERAL WITH LATEST REVISION OF A.S.T.M. SPECIFICATION FOR COMMERCIAL QUALITY HOT ROLLED BAR STEEL A-675 CHEMICAL REQUIREMENT.

	MINIMUM	MAXIMUM
CARBON	0.15 %	0.25 %
MANGANESE	0.30 %	0.60 %
PHOSPHORUS		0.04 %
SULPHUR		0.05 %

PLATES	A	B	C	D	E	WEIGHT (LBS.)	STOCK NUMBERS	
	$\pm 1/8$	$\pm 1/16$					NEW	PART WORN
SP-658L	24	22-5/8	13-1/4	5°	31/32			
SP-659L	24-1/4	22-7/8	13-39/64	5°	15/16			
SP-660L	24-1/2	23-1/8	13-31/32	5°	29/32			

0	17/12/15	REVISED PDF VERSION ESTABLISHED	
No.	Date	Revision	By Approved

Standard / **FOR EQUILATERAL TURNOUT SWITCH PLATES LEFT HAND**

Drawn MG Checked RP Approved *MBL*
VP Corridor Infrastructure



METROLINX

Date DEC 15, 2017 Plan Number GTS-0639 Rev 0

REFERENCE: TS-639

Sheet 2 OF 2