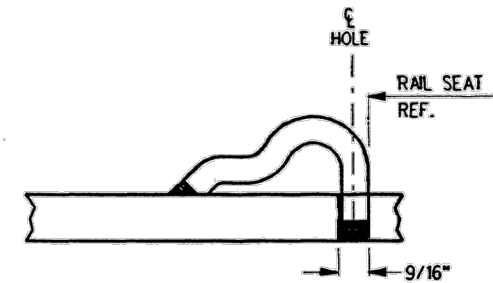
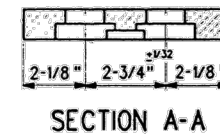
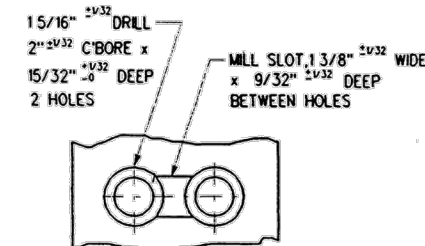


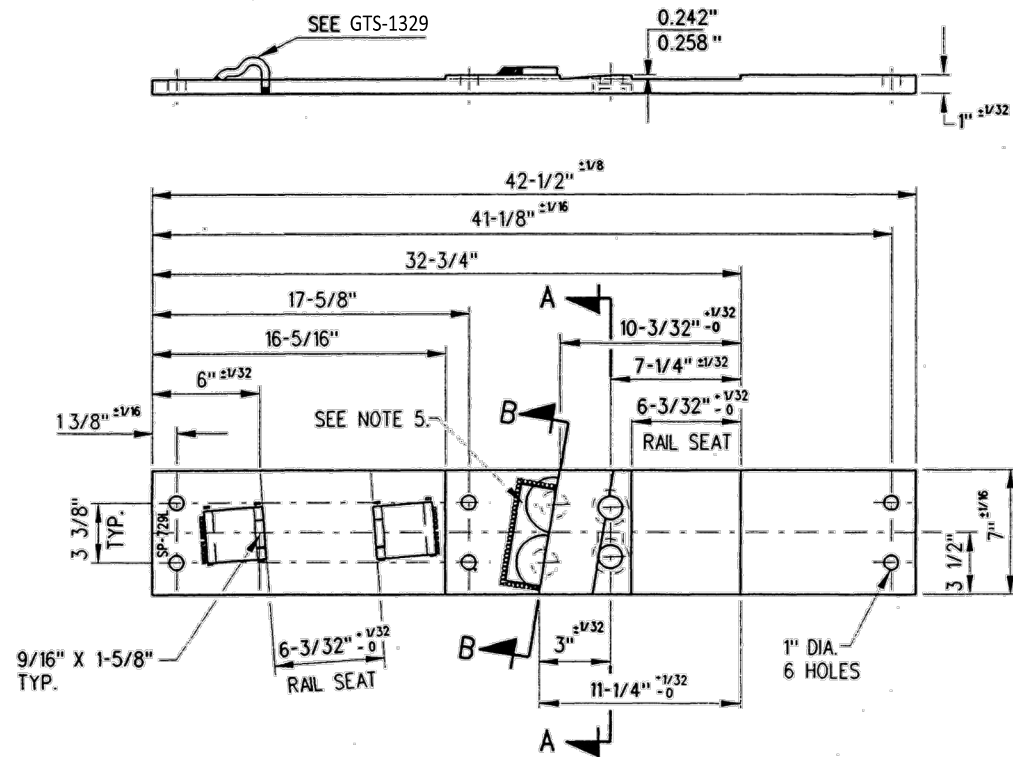
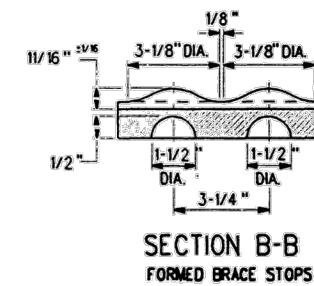
SWITCH PLATE  
SP-729R



TYPICAL PANDROL SHOULDER  
INSTALLATION

**NOTES**

1. WHEN REFERRING TO SWITCH PLATE (HALVES), PLAN AND PLATE NUMBER MUST BE STATED TO INDICATE SPECIFIC PLATE REQUIRED.
2. IDENTIFICATION CHARACTERS (1/2" MINIMUM HEIGHT) TO BE STAMPED ON EACH PLATE AS SHOWN.
3. ALL DIMENSIONS ARE IN INCHES
4. UNLESS OTHERWISE SPECIFIED ALL TOLERANCES TO BE ±1/32
5. 1/4"x2"x5 1/2" SPECIAL PAD TO BE WELDED 3 SIDES- 1/4" FILLET OR TWO 3 1/8" DIA. BOSSES 1/2" DEEP AND SPREAD 3 1/4" APART SYMMETRICAL ABOUT SECTION B-B.



SWITCH PLATE  
SP-729L

**MATERIAL**

PLATES TO CONFORM TO THE LATEST REVISION OF GO TRANSIT TRACK STANDARDS OR IN GENERAL WITH LATEST REVISION OF A.S.T.M. SPECIFICATION FOR COMMERCIAL QUALITY HOT ROLLED BAR STEEL A-675 CHEMICAL REQUIREMENT.

	MINIMUM	MAXIMUM
CARBON	0.15 %	0.25 %
MANGANESE	0.30 %	0.60 %
PHOSPHORUS		0.04 %
SULPHUR		0.05 %

0	17/12/15	REVISED PDF VERSION ESTABLISHED	
No.	Date	Revision	By Approved

Standard	SWITCH PLATES		
Drawn	MG	Checked	GGG
		Approved	KBLU VP Corridor Infrastructure



Date	DEC 15, 2017	Plan Number	GTS-0678	Rev	0
------	--------------	-------------	----------	-----	---