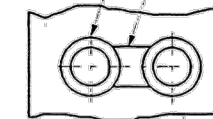
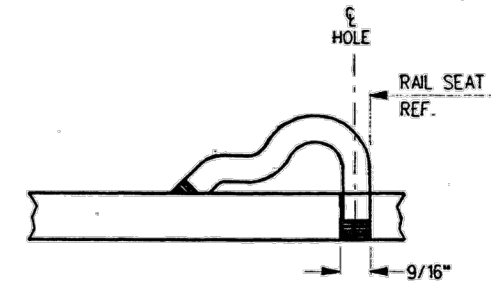


SWITCH PLATE
SP-730L

1 5/16" ±V32 DRILL
2" ±V32 C'BORE x
15/32" ±V32 DEEP
2 HOLES



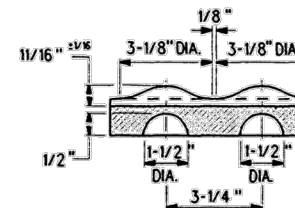
SECTION A-A



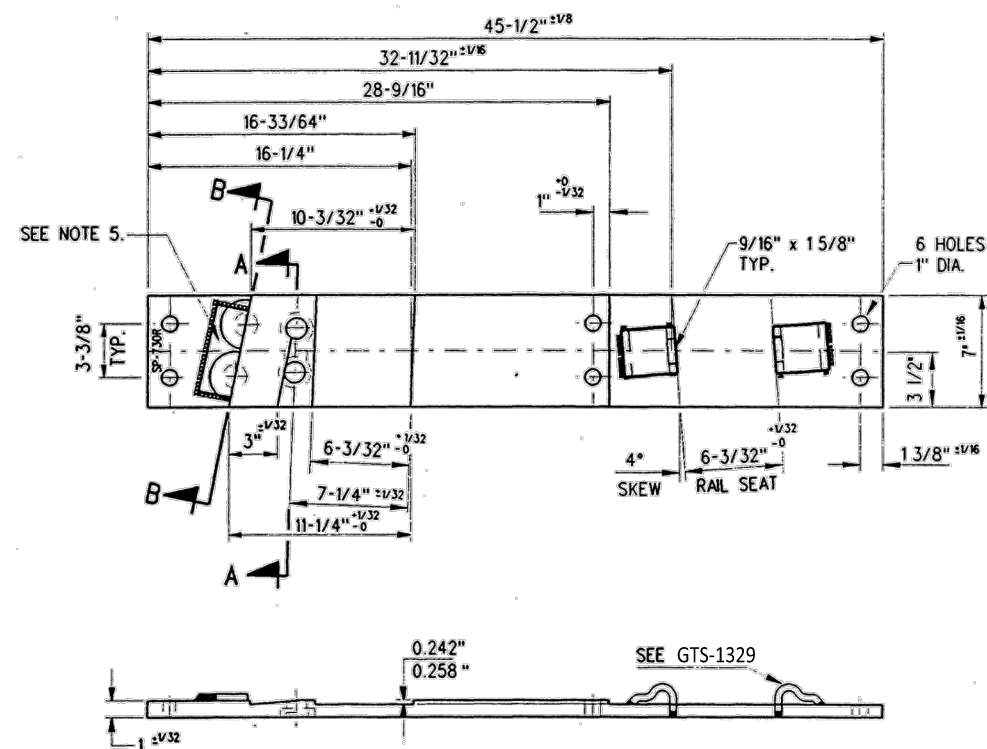
TYPICAL PANDROL SHOULDER
INSTALLATION

NOTES

1. WHEN REFERRING TO SWITCH PLATE (HALVES), PLAN AND PLATE NUMBER MUST BE STATED TO INDICATE SPECIFIC PLATE REQUIRED
2. IDENTIFICATION CHARACTERS (1/2" MINIMUM HEIGHT) TO BE STAMPED ON EACH PLATE AS SHOWN.
3. ALL DIMENSIONS ARE IN INCHES
4. UNLESS OTHERWISE SPECIFIED ALL TOLERANCES TO BE ±1/32
5. 1/4"x2"x5 1/2" SPECIAL PAD TO BE WELDED 3 SIDES- 1/4" FILLE OR TWO 3 1/8" DIA. BOSSES 1/2" DEEP AND SPREAD 3 1/4" AP SYMMETRICAL ABOUT SECTION B-B.



SECTION B-B
FORMED BRACE STOPS



SWITCH PLATE
SP-730R

MATERIAL

PLATES TO CONFORM TO THE LATEST REVISION OF GO TRANSIT TRACK STANDARDS OR IN GENERAL WITH LATEST REVISION OF A.S.T.M. SPECIFICATION FOR COMMERCIAL QUALITY HOT ROLLED BAR STEEL A-675 CHEMICAL REQUIREMENT.

	MINIMUM	MAXIMUM
CARBON	0.15 %	0.25 %
MANGANESE	0.30 %	0.60 %
PHOSPHORUS		0.04 %
SULPHUR		0.05 %

0	17/12/15	REVISED PDF VERSION ESTABLISHED	
No.	Date	Revision	By Approved

Standard	SWITCH PLATES		
----------	---------------	--	--

Drawn	Checked	Approved	
MG	GGG	KBLU	VP Corridor Infrastructure



Date	DEC 15, 2017	Plan Number	GTS-0679	Rev	0
------	--------------	-------------	----------	-----	---