

**BILL OF MATERIAL
FOR 132 LB. RAIL GAUGE PLATES**

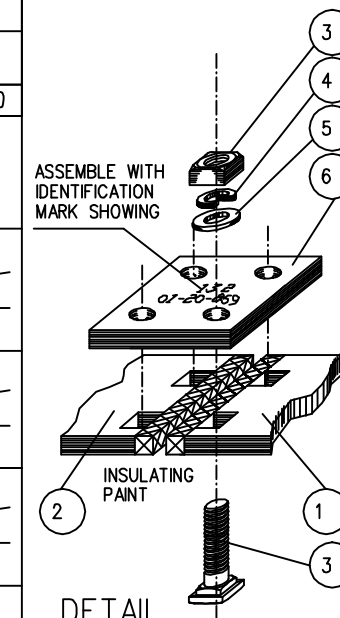
ITEM NO.	GAUGE PLATE MARK NUMBERS		STANDARD PLAN NO.	QUANTITY	CRITICAL DIMENSIONS	
	RIGHT SIDE	LEFT SIDE			X	Y
1 / 2	GP100	GP100	GTS-0525	1 OF EACH	53-15/32"	53-15/32"
1 / 2	GP101	GP102	GTS-0525	1 OF EACH	54-3/64"	53-27/32"
1 / 2	GP101	GP109	GTS-0525	1 OF EACH	54-3/64"	53-27/32"
1 / 2	GP101	GP110	GTS-0525	1 OF EACH	54-45/64"	54-1/2"
1 / 2	GP101	GP111	GTS-0525	1 OF EACH	55-17/64"	55-1/16"
1 / 2	GP101	GP113	GTS-0525	1 OF EACH	54-15/32"	54-5/16"
1 / 2	GP101	GP114	GTS-0525	1 OF EACH	54-15/16"	54-25/32"
1 / 2	GP101	GP118	GTS-0525	1 OF EACH	54-31/64"	54-21/64"
1 / 2	GP101	GP125	GTS-0525	1 OF EACH	53-41/64"	53-19/32"
1 / 2	GP101	GP126	GTS-0525	1 OF EACH	53-13/16"	53-49/64"
1 / 2	GP101	GP127	GTS-0525	1 OF EACH	54-21/32"	54-29/64"
1 / 2	GP101	GP129	GTS-0525	1 OF EACH	54"	53-27/32"
1 / 2	GP101	GP132	GTS-0525	1 OF EACH	54"	53-27/32"
1 / 2	GP101	GP139	GTS-0525	1 OF EACH	53-15/16"	53-53/64"
1 / 2	GP101	GP140	GTS-0525	1 OF EACH	54-17/64"	54-5/32"
1 / 2	GP105	GP101	GTS-0525	1 OF EACH	54-3/64"	53-27/32"
1 / 2	GP107	GP101	GTS-0525	1 OF EACH	54-3/64"	53-27/32"
1 / 2	GP108	GP101	GTS-0525	1 OF EACH	54-45/64"	54-1/2"
1 / 2	GP112	GP101	GTS-0525	1 OF EACH	55-17/64"	55-1/16"
1 / 2	GP115	GP101	GTS-0525	1 OF EACH	54-15/32"	54-5/16"
1 / 2	GP116	GP101	GTS-0525	1 OF EACH	54-15/16"	54-25/32"
1 / 2	GP117	GP101	GTS-0525	1 OF EACH	54-31/64"	54-21/64"
1 / 2	GP119	GP101	GTS-0525	1 OF EACH	53-41/64"	53-19/32"
1 / 2	GP120	GP101	GTS-0525	1 OF EACH	53-13/16"	53-49/64"
1 / 2	GP128	GP101	GTS-0525	1 OF EACH	54-21/32"	54-29/64"
1 / 2	GP130	GP101	GTS-0525	1 OF EACH	54"	53-27/32"
1 / 2	GP131	GP101	GTS-0525	1 OF EACH	54"	53-27/32"
1 / 2	GP137	GP101	GTS-0525	1 OF EACH	53-15/16"	53-53/64"
1 / 2	GP138	GP101	GTS-0525	1 OF EACH	54-17/64"	54-5/32"
1 / 2	GP104	GP102	GTS-0525	1 OF EACH	54-3/64"	53-27/32"
1 / 2	GP104	GP103	GTS-0525	1 OF EACH	54-45/64"	54-1/2"
1 / 2	GP104	GP113	GTS-0525	1 OF EACH	54-31/64"	54-21/64"
1 / 2	GP104	GP123	GTS-0525	1 OF EACH	53-41/64"	53-19/32"
1 / 2	GP104	GP124	GTS-0525	1 OF EACH	53-13/16"	53-49/64"
1 / 2	GP104	GP129	GTS-0525	1 OF EACH	54"	53-27/32"
1 / 2	GP104	GP133	GTS-0525	1 OF EACH	53-15/16"	53-53/64"
1 / 2	GP104	GP134	GTS-0525	1 OF EACH	54-17/64"	54-5/32"
1 / 2	GP105	GP104	GTS-0525	1 OF EACH	54-3/64"	53-27/32"
1 / 2	GP106	GP104	GTS-0525	1 OF EACH	54-45/64"	54-1/2"
1 / 2	GP115	GP104	GTS-0525	1 OF EACH	54-31/64"	54-21/64"
1 / 2	GP121	GP104	GTS-0525	1 OF EACH	54-41/64"	53-19/32"
1 / 2	GP122	GP104	GTS-0525	1 OF EACH	53-13/16"	53-49/64"
1 / 2	GP130	GP104	GTS-0525	1 OF EACH	54"	53-27/32"
1 / 2	GP135	GP104	GTS-0525	1 OF EACH	53-15/16"	53-53/64"
1 / 2	GP136	GP104	GTS-0525	1 OF EACH	54-17/64"	54-5/32"
1 / 2	GP141	GP143	GTS-0525	1 OF EACH	53-59/64"	53-53/64"
1 / 2	GP142	GP144	GTS-0525	1 OF EACH	54-13/64"	54-7/64"
1 / 2	GP145	GP147	GTS-0525	1 OF EACH	53-59/64"	53-53/64"
1 / 2	GP146	GP148	GTS-0525	1 OF EACH	54-13/64"	54-7/64"

ITEM NO.	DESCRIPTION	STANDARD PLAN NO.	QTY.
3	1" DIA.-8 UNC.SQ.HD.(1/4"THICK) C.B.x 3 1/2" L. C/W SQ. NUT	GTS-1307 /1	4
4	SPRING WASHER FOR 1" DIA. BOLT	GTS-1301	4
5	PL. WASHER FOR 1" DIA. BOLT(1-1/16" I.D. x 2- 1/2" O.D x 5/32" THK)	GTS-1337	4
6	INSULATION PLATE 100/132	GTS-526	1

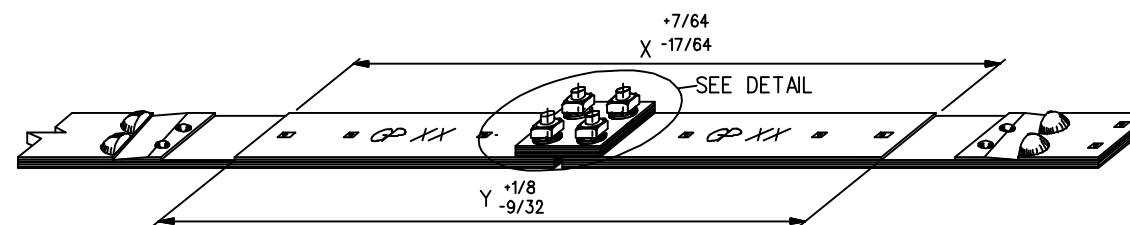
GAUGE PLATE CROSS REFERENCE

132 LB R.E. RAIL

SWITCH POINTS	MANUAL	SPRING	POWER						
			GTS -/A	GTS -/B	GTS -/C	GTS -/D			
			MACHINE RIGHT	MACHINE LEFT	MACHINE RIGHT	MACHINE LEFT			
	RIGHT HAND	LEFT HAND	RIGHT HAND	LEFT HAND	RIGHT HAND	LEFT HAND	RIGHT HAND	LEFT HAND	
11'-0"									
16'-6"	GP100 GP101	GP100 GP101	GP100 GP101	GP100 GP101	GP100 GP101	GP100 GP101	GP100 GP101	GP100 GP101	GP100 GP101
22'-0"	GP100 GP101	GP100 GP101	GP100 GP101	GP100 GP101	GP100 GP101	GP100 GP101	GP100 GP101	GP100 GP101	GP100 GP101
33'-0"	GP100 GP101	GP100 GP101	GP100 GP101	GP100 GP101	GP100 GP101	GP100 GP101	GP100 GP101	GP100 GP101	GP100 GP101
39'-0" LATERAL	GP100 GP101	GP100 GP101	GP100 GP101	GP100 GP101	GP100 GP101	GP100 GP101	GP100 GP101	GP100 GP101	GP100 GP101
39'-0" EQUILATERAL	GP100 GP101	GP100 GP101	GP100 GP101	GP100 GP101	GP100 GP101	GP100 GP101	GP100 GP101	GP100 GP101	GP100 GP101



DETAIL
TYPICAL GAUGE PLATE
INSULATED JOINT ASSEMBLY



NOTES:

DIELECTRIC REQUIREMENT:
DIELECTRIC TESTS SHALL BE MADE WITH THE INSULATION DRY. ASSEMBLED INSULATED TRACK FITTINGS SHALL WITHSTAND FOR NOT LESS THAN THREE SECONDS AN INSULATED TEST OF 1500 VOLTS A.C. WITHOUT FLASH OVER OR PUNCTURE BETWEEN ALL METALLIC PARTS AND OTHER METALLIC PARTS INSULATED THEREFROM.
WHEN REFERRING TO A COMPLETE GAUGE PLATE ASSEMBLY AS SHOWN, MARK NUMBER OF BOTH GAUGE PLATE HALVES MUST BE STATED (EX. GP105/GP101) TO IDENTIFY THE ACTUAL GAUGE PLATE.
THE RIGHT SIDE GAUGE PLATE HALF IS STATED FIRST IN ALL INSTANCES.

NOTICE:

THE SAME GAUGE PLATE HALVES, GP-NUMBER ARE USED ON BOTH 132 & 136 LB. RAIL GAUGE PLATES.
THE DIFFERENCE BETWEEN 132 & 136 LB. RAIL GAUGE PLATES IS THE INSULATION PLATE ITEM 6.
WHEN ORDERING GAUGE PLATE : PLAN NUMBER GTS-0522 & STOCK NUMBER, BESIDES THE GAUGE PLATE GP-NUMBERS MUST BE STATED TO OBTAIN CORRECT GAUGE PLATE TO SUIT 132 LB. RAIL.

METRIC CONVERSION: 1 inch=25.4mm, 1 foot=304.8mm

1	18/07/27	ADDED IMPERIAL TO METRIC CONVERSION NOTE
No.	Date	Revision
		By Approved

Standard / **ASSEMBLY
INSULATED GAUGE PLATES
FOR 132 LB. R.E. RAILS**

Drawn MG Checked GGS Approved VP Engineering & Asset Management



Date DEC 15, 2017 Plan Number GTS-0522 Rev 1