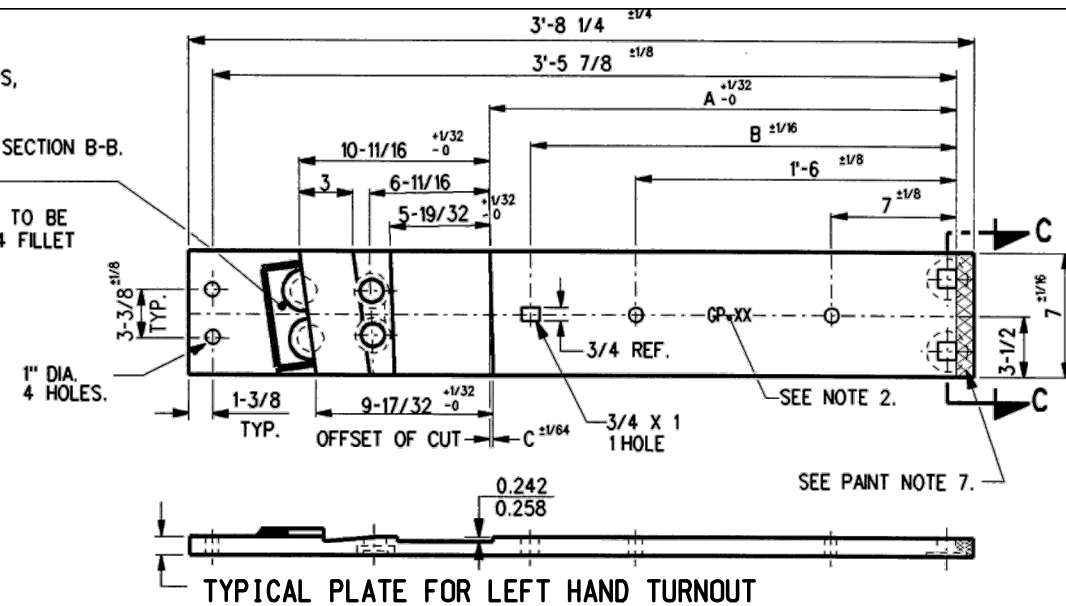


TWO 3-1/8 DIA. BOSSES, EMBOSSED 1/2 DEEP, SPREAD 3-1/4 APART, SYMMETRICAL ABOUT SECTION B-B.

(OR)

1/4 X 2 X 5-1/2 PAD TO BE WELDED 3 SIDES - 1/4 FILLET

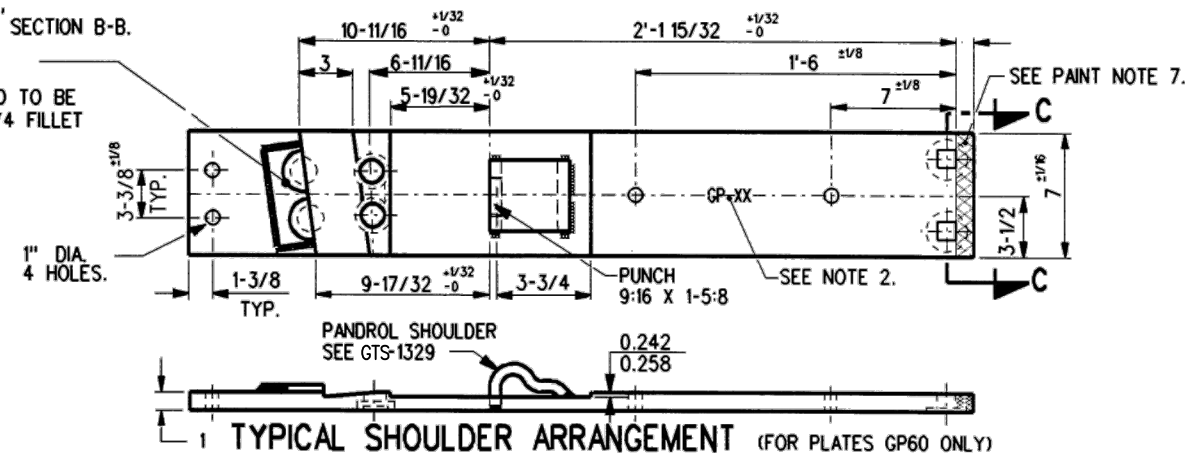


TYPICAL PLATE FOR LEFT HAND TURNOUT

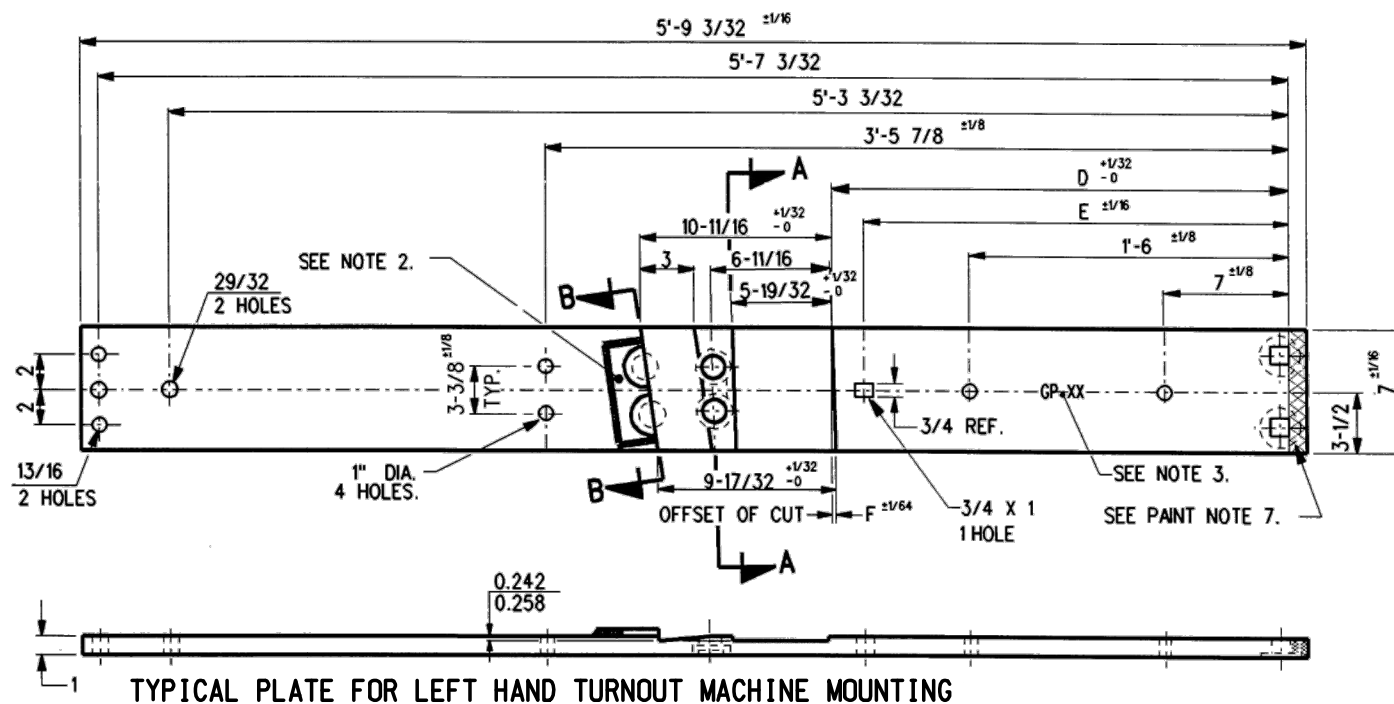
TWO 3-1/8 DIA. BOSSES, EMBOSSED 1/2 DEEP, SPREAD 3-1/4 APART, SYMMETRICAL ABOUT SECTION B-B.

(OR)

1/4 X 2 X 5-1/2 PAD TO BE WELDED 3 SIDES - 1/4 FILLET



TYPICAL SHOULDER ARRANGEMENT (FOR PLATES GP60 ONLY)



TYPICAL PLATE FOR LEFT HAND TURNOUT MACHINE MOUNTING

GAUGE PLATES	A +1/32 -0	B ±1/16	C ±1/64	D +1/32 -0	E ±1/16	F ±1/64
GP60	2'-1 15/32"	-----	0	-----	-----	-----
GP61	2'-1 15/32"	1'-11 7/16"	0	-----	-----	-----
GP62	2'-2 1/32"	1'-11 15/16"	13/64	-----	-----	-----
GP63	2'-2 11/16"	-----	13/64	-----	-----	-----
GP71	2'-3 1/4"	-----	13/64	-----	-----	-----
GP73	2'-2 15/32"	-----	5/32	-----	-----	-----
GP74	2'-2 15/16"	-----	5/32	-----	-----	-----
GP81	2'-2 1/8"	1'-11 31/32"	9/32	-----	-----	-----
GP82	2'-3"	-----	9/32	-----	-----	-----
GP87	2'-2 21/32"	-----	13/64	-----	-----	-----
GP89	2'-2"	1'-11 29/32"	5/32	-----	-----	-----
GP97	2'-1 15/32"	1'-11 39/64"	1/16	-----	-----	-----
GP98	2'-1 21/32"	-----	1/16	-----	-----	-----

GAUGE PLATES	A +1/32 -0	B ±1/16	C ±1/64	D +1/32 -0	E ±1/16	F ±1/64
GP69	-----	-----	-----	2'-2 1/32"	1'-11 15/16"	13/64
GP70	-----	-----	-----	2'-2 11/16"	-----	13/64
GP78	-----	-----	-----	2'-2 15/32"	-----	5/32
GP85	-----	-----	-----	2'-2 1/8"	1'-11 31/32"	9/32
GP86	-----	-----	-----	2'-3 "	-----	9/32
GP92	-----	-----	-----	2'-2 "	1'-11 29/32"	5/32
GP99	-----	-----	-----	2'-1 15/32"	1'-11 39/64"	1/16
GP201	-----	-----	-----	2'-1 21/32"	-----	1/16

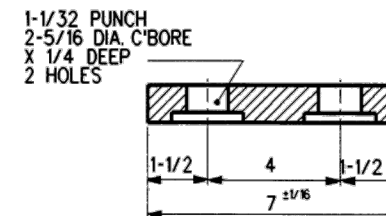
NOTES

- WHEN REFERRING TO GAUGE PLATES (HALVES), PLAN AND PLATE NUMBERS MUST BE STATED TO INDICATE SPECIFIC PLATES REQUIRED.
- IDENTIFICATION CHARACTERS (3/4 MINIMUM HEIGHT) TO BE STAMPED ON PLATE AS SHOWN.
- ALL DIMENSIONS ARE IN INCHES.
- UNLESS OTHERWISE SPECIFIED ALL TOLERANCES TO BE ±1/32.
- ALL HOLES TO BE PUNCHED OR DRILLED. THE USE OF ACETYLENE TORCH OR OTHER BURNING METHOD FOR THE MAKING OF HOLES OR CUTTING IN THE MANUFACTURE OF GAUGE PLATES IS ABSOLUTELY PROHIBITED.
- INSULATION BOLT HOLES MUST HAVE BURRS REMOVED.
- THE ADJOINING ENDS OF ALL GAUGE PLATE HALVES TO BE PAINTED WITH INSULATING PAINT AS SHOWN
- FOR ASSEMBLY OF GAUGE PLATES, SEE PLAN GTS-521.

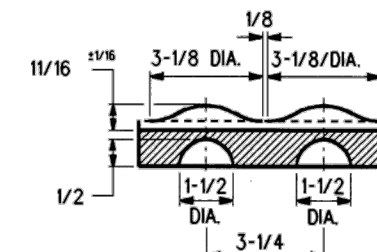
MATERIAL

PLATES TO CONFORM TO THE LATEST REVISION OF GO TRANSIT TRACK STANDARDS OR IN GENERAL WITH LATEST REVISION OF A.S.T.M. SPECIFICATION FOR COMMERCIAL QUALITY HOT ROLLED BAR STEEL A-675 CHEMICAL REQUIREMENT.

	MINIMUM	MAXIMUM
CARBON	0.15 %	0.25 %
MANGANESE	0.30 %	0.60 %
PHOSPHORUS		0.04 %
SULPHUR		0.05 %



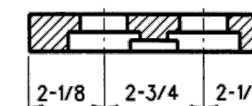
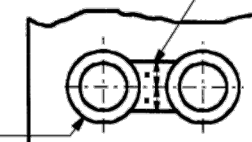
SECTION C-C



FORMED BRACE STOPS SECTION B-B

MILL SLOT, 1-3/8 WIDE X 9/32 DEEP BETWEEN HOLES

1-5/16 ±1/32 DRILL DEEP 2 C'BORE X 15/32 2 HOLES



SECTION A-A

METRIC CONVERSION: 1 inch=25.4mm, 1 foot=304.8mm

1	18/07/27	ADDED IMPERIAL TO METRIC CONVERSION NOTE	
No.	Date	Revision	By Approved

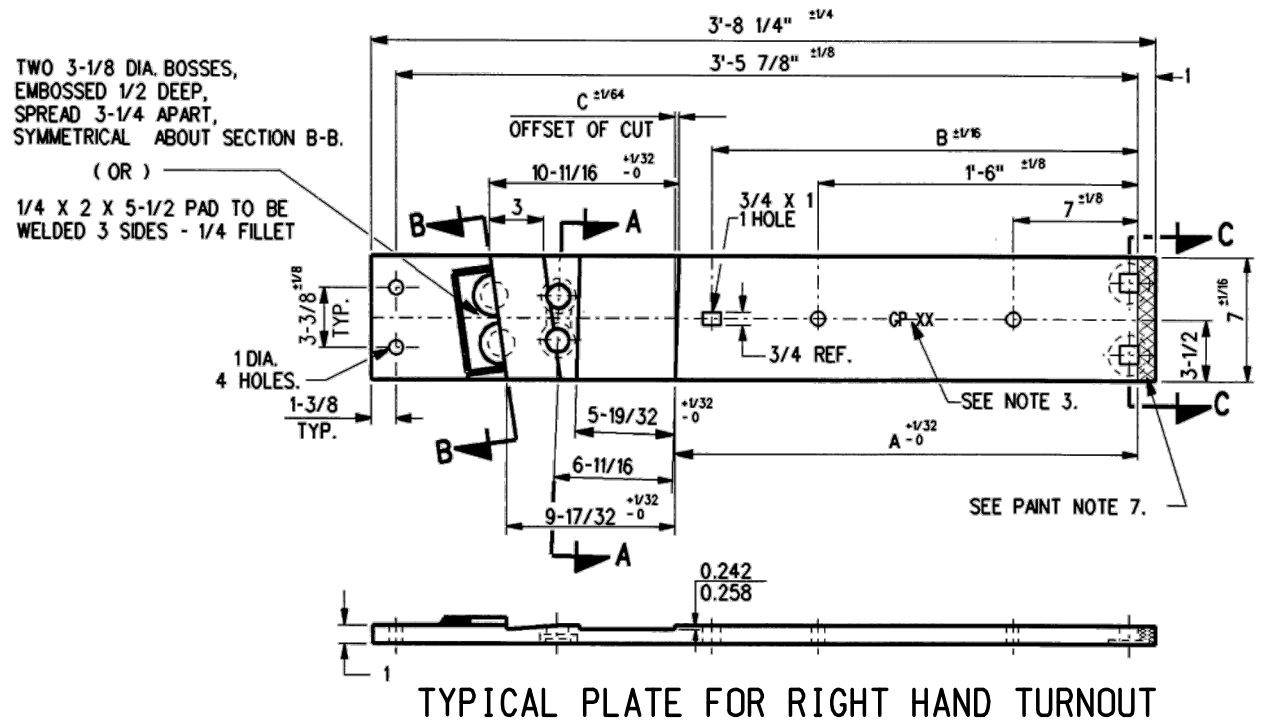
Standard / **INSULATED GAUGE PLATES (HALVES) FOR 100 & 115 LB. R.E. RAILS**

Drawn MG Checked GGS Approved *[Signature]* VP Engineering & Asset Management

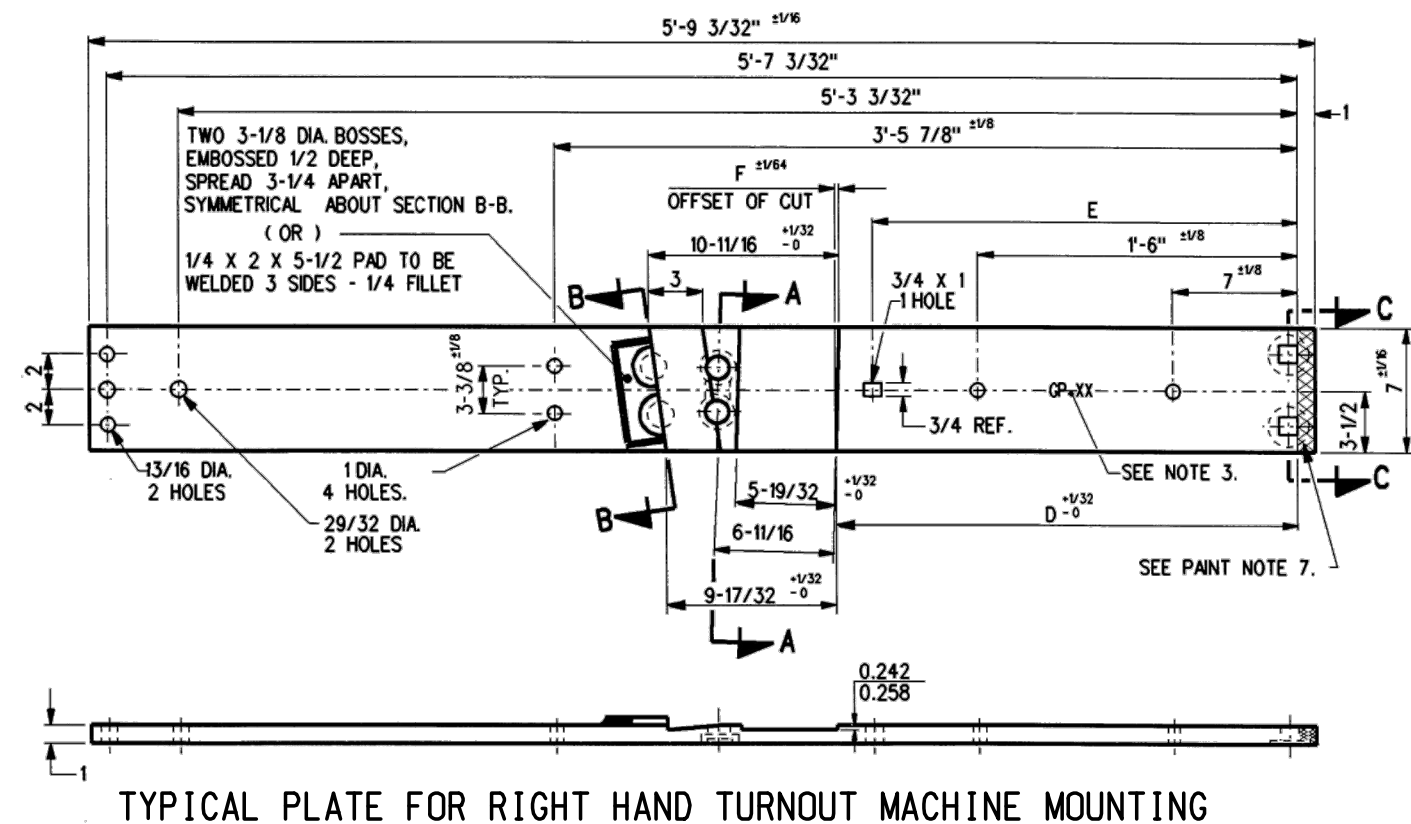


Date DEC 15, 2017 Plan Number GTS-0524 Rev 1

REFERENCE: TS-524 Sheet 1 OF 2



TYPICAL PLATE FOR RIGHT HAND TURNOUT



TYPICAL PLATE FOR RIGHT HAND TURNOUT MACHINE MOUNTING

GAUGE PLATES	A +1/32 -0	B ±1/16	C ±1/64	D +1/32 -0	E ±1/16	F ±1/64
GP65	2'-2 1/32"	1'-11 15/16"	13/64"	-----	-----	-----
GP66	2'-2 11/16"	-----	13/64"	-----	-----	-----
GP72	2'-3 1/4"	-----	13/64"	-----	-----	-----
GP75	2'-2 15/32"	-----	5/32"	-----	-----	-----
GP76	2'-2 15/16"	-----	5/32"	-----	-----	-----
GP79	2'-2 1/8"	1'-11 31/32"	9/32"	-----	-----	-----
GP80	2'-3"	-----	9/32"	-----	-----	-----
GP88	2'-2 21/32"	-----	13/64"	-----	-----	-----
GP90	2'-2"	1'-11 15/16"	5/32"	-----	-----	-----
GP95	2'-1 15/32"	1'-11 39/64"	1/16"	-----	-----	-----
GP96	2'-1 21/32"	-----	1/16"	-----	-----	-----
GPXX	2'-1 5/64"	1'-11 27/64"	1/16"	-----	-----	-----
GPXX	2'-1 9/32"	-----	1/16"	-----	-----	-----

GAUGE PLATES	A +1/32 -0	B ±1/16	C ±1/64	D +1/32 -0	E ±1/16	F ±1/64
GP64	-----	-----	-----	2'-1 15/32"	1'-11 15/32"	0
GP67	-----	-----	-----	2'-2 1/32"	1'-11 15/16"	13/64
GP68	-----	-----	-----	2'-2 11/16"	-----	13/64
GP77	-----	-----	-----	2'-2 15/32"	-----	5/32
GP83	-----	-----	-----	2'-2 1/8 "	1'-11 31/32"	9/32
GP84	-----	-----	-----	2'-3 "	-----	9/32
GP91	-----	-----	-----	2'-2 "	1'-11 29/32"	5/32
GP93	-----	-----	-----	2'-1 15/32"	1'-11 39/64"	1/16
GP94	-----	-----	-----	2'-1 21/32"	-----	1/16
GPXX	-----	-----	-----	2'-1 5/64"	1'-11 27/64"	1/16
GPXX	-----	-----	-----	2'-1 9/32"	-----	1/16

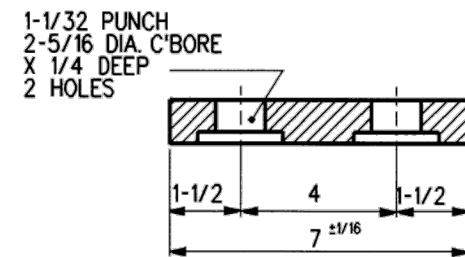
NOTES

1. WHEN REFERRING TO GAUGE PLATES (HALVES), DRAWING AND PLATE NUMBERS MUST BE STATED TO INDICATE SPECIFIC PLATE REQUIRED.
2. IDENTIFICATION CHARACTERS (3/4 MINIMUM HEIGHT) TO BE STAMP ON PLATE AS SHOWN.
3. ALL DIMENSIONS ARE IN INCHES.
4. UNLESS OTHERWISE SPECIFIED ALL TOLERANCES TO BE ±1/32.
5. ALL HOLES TO BE PUNCHED OR DRILLED. THE USE OF ACETYLENE TORCH OR OTHER BURNING METHOD FOR THE MAKING OF HOLES OR CUTTING IN THE MANUFACTURE OF GAUGE PLATES IS ABSOLUTELY PROHIBITED.
6. INSULATION BOLT HOLES MUST HAVE BURRS REMOVED.
7. THE ADJOINING ENDS OF ALL GAUGE PLATE HALVES TO BE PAINTED WITH INSULATING PAINT AS SHOWN
8. FOR ASSEMBLY OF GAUGE PLATES, SEE PLAN GTS-521.

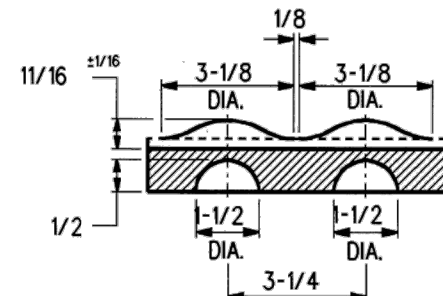
MATERIAL

PLATES TO CONFORM TO THE LATEST REVISION OF GO TRANSIT TRACK STANDARDS OR IN GENERAL WITH LATEST REVISION OF A.S.T.M. SPECIFICATION FOR COMMERCIAL QUALITY HOT ROLLED BAR STEEL A-675 CHEMICAL REQUIREMENT.

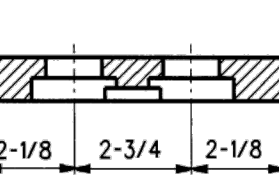
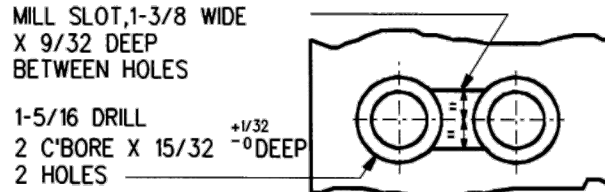
	MINIMUM	MAXIMUM
CARBON	0.15 %	0.25 %
MANGANESE	0.30 %	0.60 %
PHOSPHORUS	0.04 %	0.04 %
SULPHUR		0.05 %



SECTION C-C



FORMED BRACE STOPS SECTION B-B



SECTION A-A

METRIC CONVERSION: 1 inch=25.4mm, 1 foot=304.8mm

1	18/07/27	ADDED IMPERIAL TO METRIC CONVERSION NOTE	
No.	Date	Revision	By Approved

Standard / **INSULATED GAUGE PLATES (HALVES) FOR 100 & 115 LB. R.E. RAILS**

Drawn MG Checked GGS Approved *[Signature]* VP Engineering & Asset Management



Date DEC 15, 2017 Plan Number GTS-0524 Rev 1