

TYPICAL PANDROL SHOULDER
INSTALLATION

DETAIL

NOTES

1. WHEN REFERRING TO FROG PLATES, PLAN AND PLATE NUMBERS MUST BE STATED TO INDICATE SPECIFIC PLATE REQUIRED.
2. IDENTIFICATION CHARACTERS (1/2" MINIMUM HEIGHT) TO BE STAMPED ON EACH PLATE AS SHOWN.
3. ALL DIMENSIONS ARE IN INCHES.
4. UNLESS OTHERWISE SPECIFIED ALL TOLERANCES TO BE ±1/32
5. WHERE APPLICABLE, FROG PLATES TO BE MADE BY WELDING MULTIPLE PLATES TOGETHER, AS SHOWN, OR BY MACHINING A SINGLE PLATE.

MATERIAL

PLATES TO CONFORM TO THE LATEST REVISION OF GO TRANSIT TRACK STANDARDS OR IN GENERAL WITH LATEST REVISION OF A.S.T.M. SPECIFICATION FOR COMMERCIAL QUALITY HOT ROLLED BAR STEEL A-675 CHEMICAL REQUIREMENT.

	MINIMUM	MAXIMUM
CARBON	0.15 %	0.25 %
MANGANESE	0.30 %	0.60 %
PHOSPHORUS		0.04 %
SULPHUR		0.05 %

PLATES	A	B	C	D	E	F	WEIGHT (LBS.)	STOCK NUMBERS	
	±1/8	±1/16						NEW	PART WORN
FP-585R	29-1/2	28-1/8	23-17/32	7°	4 39/64	5-23/64	49.8		
FP-588R	29-1/4	27-7/8	23-5/32	7°	4-15/64	4-63/64	49.2		
FP-667R	30	28-5/8	24-1/16	6°	5-15/64	5-27/32	51.0		
FP-675R	28-1/2	27-1/8	22-1/8	6°	3-5/16	3-7/8	47.3		
FP-681R	29-1/2	28-1/8	23-41/64	6°	4-51/64	5-25/64	49.9		
FP-682R	27-1/2	26-1/8	21-53/64	6°	3-1/64	3-19/32	45.6		
FP-683R	28	26-5/8	21-53/64	6°	3-1/32	3-41/64	46.3		
FP-684R	29-3/4	28-3/8	23-15/32	6°	4-41/64	5-15/64	50.1		

METRIC CONVERSION: 1 inch=25.4mm, 1 foot=304.8mm

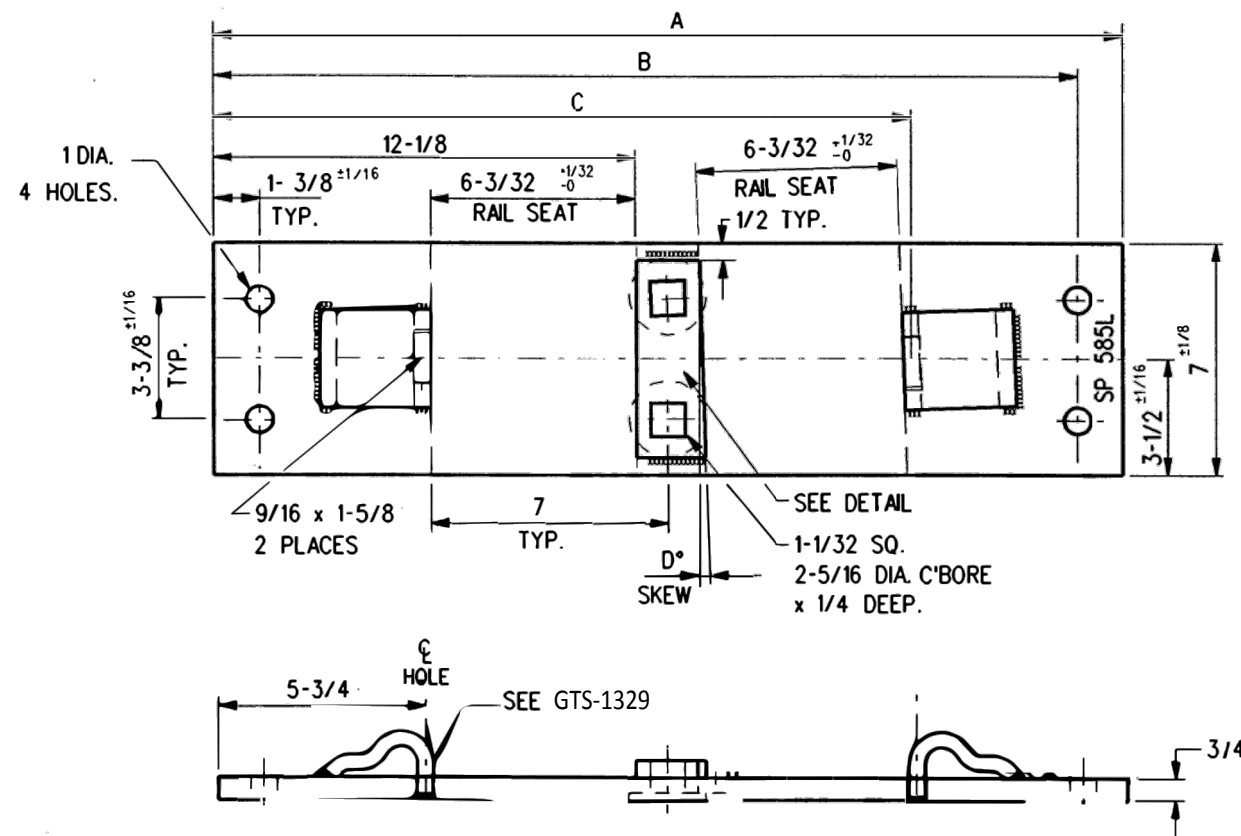
1	18/07/27	ADDED IMPERIAL TO METRIC CONVERSION NOTE
No.	Date	Revision
		By Approved

Standard / **FROG PLATES
RIGHT HAND**

Drawn MG Checked GS Approved *[Signature]*
VP Engineering & Asset Management



Date DEC 15, 2017 Plan Number GTS-0614 Rev 1



TYPICAL PANDROL SHOULDER INSTALLATION

NOTES

1. WHEN REFERRING TO FROG PLATES, PLAN AND PLATE NUMBERS MUST BE STATED TO INDICATE SPECIFIC PLATE REQUIRED.
2. IDENTIFICATION CHARACTERS (1/2" MINIMUM HEIGHT) TO BE STAMPED ON EACH PLATE AS SHOWN.
3. ALL DIMENSIONS ARE IN INCHES.
4. UNLESS OTHERWISE SPECIFIED ALL TOLERANCES TO BE ±1/32
5. WHERE APPLICABLE, FROG PLATES TO BE MADE BY WELDING MULTIPLE PLATES TOGETHER, AS SHOWN, OR BY MACHINING A SINGLE PLATE.

MATERIAL

PLATES TO CONFORM TO THE LATEST REVISION OF GO TRANSIT TRACK STANDARDS OR IN GENERAL WITH LATEST REVISION OF A.S.T.M. SPECIFICATION FOR COMMERCIAL QUALITY HOT ROLLED BAR STEEL A-675 CHEMICAL REQUIREMENT.

	MINIMUM	MAXIMUM
CARBON	0.15 %	0.25 %
MANGANESE	0.30 %	0.60 %
PHOSPHORUS		0.04 %
SULPHUR		0.05 %

PLATES	A	B	C	D	E	F	WEIGHT (LBS.)	STOCK NUMBERS	
	±1/8	±1/16						NEW	PART WORN
FP-585L	29-1/2	28-1/8	23-17/32	7°	4 39/64	5-23/64	49.8		
FP-588L	29-1/4	27-7/8	23-5/32	7°	4-15/64	4-63/64	49.2		
FP-667L	30	28-5/8	24-1/16	6°	5-15/64	5-27/32	51.0		
FP-675L	28-1/2	27-1/8	22-1/8	6°	3-5/16	3-7/8	47.3		
FP-681L	29-1/2	28-1/8	23-41/64	6°	4-51/64	5-25/64	49.9		
FP-682L	27-1/2	26-1/8	21-53/64	6°	3-1/64	3-19/32	45.6		
FP-683L	28	26-5/8	21-53/64	6°	3-1/32	3-41/64	46.3		
FP-684L	29-3/4	28-3/8	23-15/32	6°	4-41/64	5-15/64	50.1		

METRIC CONVERSION: 1 inch=25.4mm, 1 foot=304.8mm

1	18/07/27	ADDED IMPERIAL TO METRIC CONVERSION NOTE
No.	Date	Revision
		By Approved

Standard/ **FROG PLATES LEFT HAND**

Drawn MG Checked GS Approved *[Signature]* VP Engineering & Asset Management



Date DEC 15, 2017 Plan Number GTS-0614 Rev 1