

**NOTES**

1. WHEN REFERRING TO FROG PLATES, PLAN AND PLATE NUMBERS MUST BE STATED TO INDICATE SPECIFIC PLATE REQUIRED.
2. IDENTIFICATION CHARACTERS (1/2" MINIMUM HEIGHT) TO BE STAMPED ON EACH PLATE AS SHOWN.
3. ALL DIMENSIONS ARE IN INCHES.
4. UNLESS OTHERWISE SPECIFIED ALL TOLERANCES TO BE ±1/32.

**MATERIAL**

PLATES TO CONFORM TO THE LATEST REVISION OF GO TRANSIT TRACK STANDARDS OR IN GENERAL WITH LATEST REVISION OF A.S.T.M. SPECIFICATION FOR COMMERCIAL QUALITY HOT ROLLED BAR STEEL A-675 CHEMICAL REQUIREMENT.

	MINIMUM	MAXIMUM
CARBON	0.15 %	0.25 %
MANGANESE	0.30 %	0.60 %
PHOSPHORUS		0.04 %
SULPHUR		0.05 %

PLATES	A	B	C	D	E	WEIGHT (LBS.)	STOCK NUMBERS	
	±1/16		+0 -1/32	+0 -1/32			NEW	PART WORN
FP-571R	19-1/2	18-1/4	14-63/64	15-19/64	5°			
FP-572R	18	16-3/4	14-1/8	14-1/2	2°			
FP-599R	19-1/2	18-1/4	14-57/64	15-13/64	6°			
FP-634R	20-1/4	19	15-3/8	15-11/16	7°			
FP-635R	22-1/2	21-1/4	17-29/32	18-7/32	7°			
FP-637R	20	18-3/4	15-5/32	15-5/8	6°			
FP-638R	34-1/4	33	29-15/16	30-1/4	7°			
FP-645R	19-21/32	18-13/32	15-7/16	15-3/4	6°			
FP-646R	21-31/64	20-15/64	17-11/32	17-21/32	6°			
FP-649R	21-1/4	20	16-19/32	16-29/32	6°			

**METRIC CONVERSION: 1 inch=25.4mm, 1 foot=304.8mm**

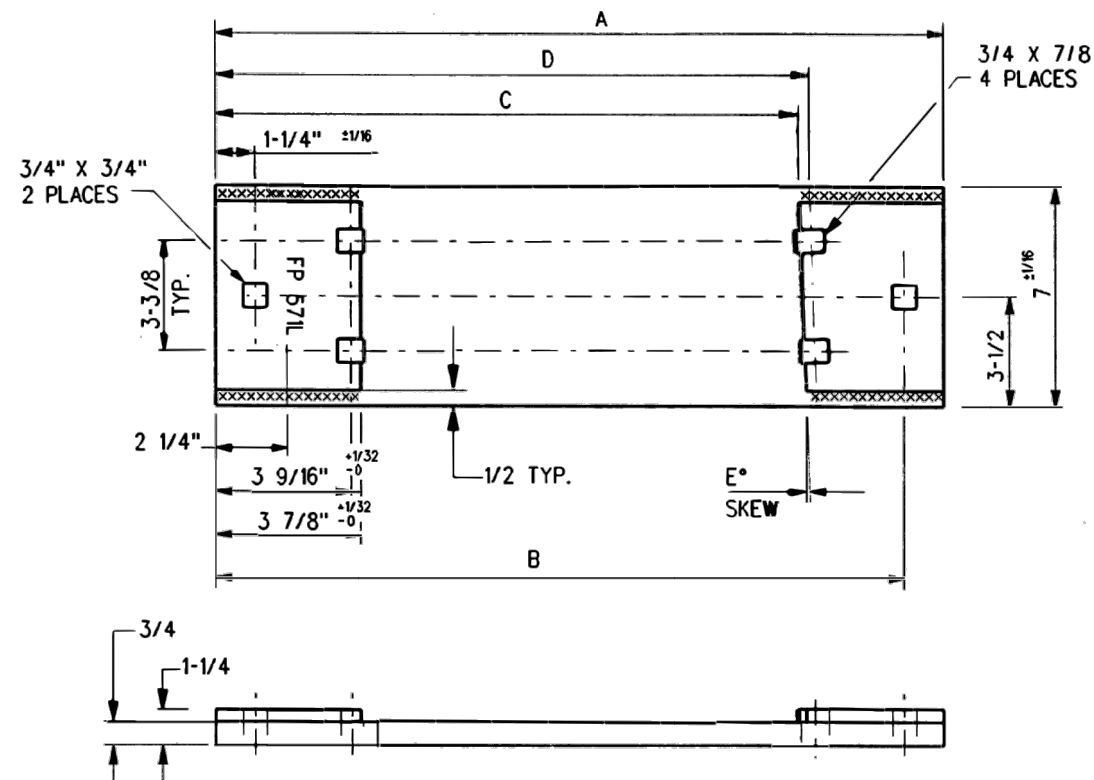
1	18/07/27	ADDED IMPERIAL TO METRIC CONVERSION NOTE	
No.	Date	Revision	By Approved

Standard / **FROG PLATES  
RIGHT HAND**

Drawn MG Checked GGS Approved *[Signature]*  
VP Engineering & Asset Management



Date DEC 15, 2017 Plan Number GTS-0618 Rev 1



**NOTES**

1. WHEN REFERRING TO FROG PLATES, PLAN AND PLATE NUMBERS MUST BE STATED TO INDICATE SPECIFIC PLATE REQUIRED.
2. IDENTIFICATION CHARACTERS (1/2" MINIMUM HEIGHT) TO BE STAMPED ON EACH PLATE AS SHOWN.
3. ALL DIMENSIONS ARE IN INCHES.
4. UNLESS OTHERWISE SPECIFIED ALL TOLERANCES TO BE ±1/32.

**MATERIAL**

PLATES TO CONFORM TO THE LATEST REVISION OF GO TRANSIT TRACK STANDARDS OR IN GENERAL WITH LATEST REVISION OF A.S.T.M. SPECIFICATION FOR COMMERCIAL QUALITY HOT ROLLED BAR STEEL A-675 CHEMICAL REQUIREMENT.

	MINIMUM	MAXIMUM
CARBON	0.15 %	0.25 %
MANGANESE	0.30 %	0.60 %
PHOSPHORUS		0.04 %
SULPHUR		0.05 %

PLATES	A	B	C	D	E	WEIGHT (LBS.)	STOCK NUMBERS	
	±1/16		+0 -1/32	+0 -1/32			NEW	PART WORN
FP-571L	19-1/2	18-1/4	14-63/64	15-19/64	5°			
FP-572L	18	16-3/4	14-1/8	14-1/2	2°			
FP-599L	19-1/2	18-1/4	14-57/64	15-13/64	6°			
FP-634L	20-1/4	19	15-3/8	15-11/16	7°			
FP-635L	22-1/2	21-1/4	17-29/32	18-7/32	7°			
FP-637L	20	18-3/4	15-5/32	15-5/8	6°			
FP-638L	34-1/4	33	29-15/16	30-1/4	7°			
FP-645L	19-21/32	18-13/32	15-7/16	15-3/4	6°			
FP-646L	21-31/64	20-15/64	17-11/32	17-21/32	6°			
FP-649L	21-1/4	20	16-19/32	16-29/32	6°			

**METRIC CONVERSION: 1 inch=25.4mm, 1 foot=304.8mm**

1	18/07/27	ADDED IMPERIAL TO METRIC CONVERSION NOTE
No.	Date	Revision
		By Approved

Standard / **FROG PLATES LEFT HAND**

Drawn MG Checked GGS Approved *[Signature]*  
VP Engineering & Asset Management



Date DEC 15, 2017 Plan Number GTS-0618 Rev 1