

PLATES	A	B	C	D	E	WEIGHT (LBS.)	STOCK NUMBERS	
	±1/16		+0 -1/32	+0 -1/32			NEW	PART WORN
FP-560R	27-1/4	26	17-13/64	16-57/64	5°			
FP-561R	25-1/2	24-1/4	15-7/16	15-1/8	5°			
FP-562R	23-3/4	22-1/2	13-21/32	13-11/32	5°			
FP-563R	22-1/4	21	12-5/32	11-27/32	5°			
FP-566R	21	19-3/4	11-9/64	10-53/64	5°			
FP-567R	22-1/2	21-1/4	12-41/64	12-21/64	5°			
FP-568R	24	22-3/4	14-9/64	13-53/64	5°			
FP-569R	26	24-3/4	15-63/64	15-43/64	5°			
FP-570R	27-3/4	26-1/2	17-13/16	17-1/2	5°			
FP-591 R	26-3/4	25-1/2	16-3/4	16-7/16	6°			
FP-592 R	24-3/4	23-1/2	14-9/16	14-1/4	6°			
FP-593 R	22-3/4	21-1/2	12-3/4	12-7/16	6°			
FP-596 R	23	21-3/4	12-57/64	12-37/64	6°			
FP-597 R	24-1/2	23-1/4	14-21/32	14-11/32	6°			
FP-598 R	26	24-3/4	17	16-11/16	6°			
FP-632 R	26-3/4	25-1/2	16-49/64	16-25/64	7°			
FP-633 R	24-1/2	23-1/4	14-21/64	14-1/64	7°			
FP-636 R	24-1/4	23	14-13/32	14-3/32	7°			

NOTES

1. WHEN REFERRING TO FROG PLATES, PLAN AND PLATE NUMBERS MUST BE STATED TO INDICATE SPECIFIC PLATE REQUIRED.
2. IDENTIFICATION CHARACTERS (1/2" MINIMUM HEIGHT) TO BE STAMPED ON EACH PLATE AS SHOWN.
3. ALL DIMENSIONS ARE IN INCHES.
4. UNLESS OTHERWISE SPECIFIED ALL TOLERANCES TO BE ± 1/32.

MATERIAL

PLATES TO CONFORM TO THE LATEST REVISION OF GO TRANSIT TRACK STANDARDS OR IN GENERAL WITH LATEST REVISION OF A.S.T.M. SPECIFICATION FOR COMMERCIAL QUALITY HOT ROLLED BAR STEEL A-675 CHEMICAL REQUIREMENT.

	MINIMUM	MAXIMUM
CARBON	0.15 %	0.25 %
MANGANESE	0.30 %	0.60 %
PHOSPHORUS		0.04 %
SULPHUR		0.05 %

METRIC CONVERSION: 1 inch=25.4mm, 1 foot=304.8mm

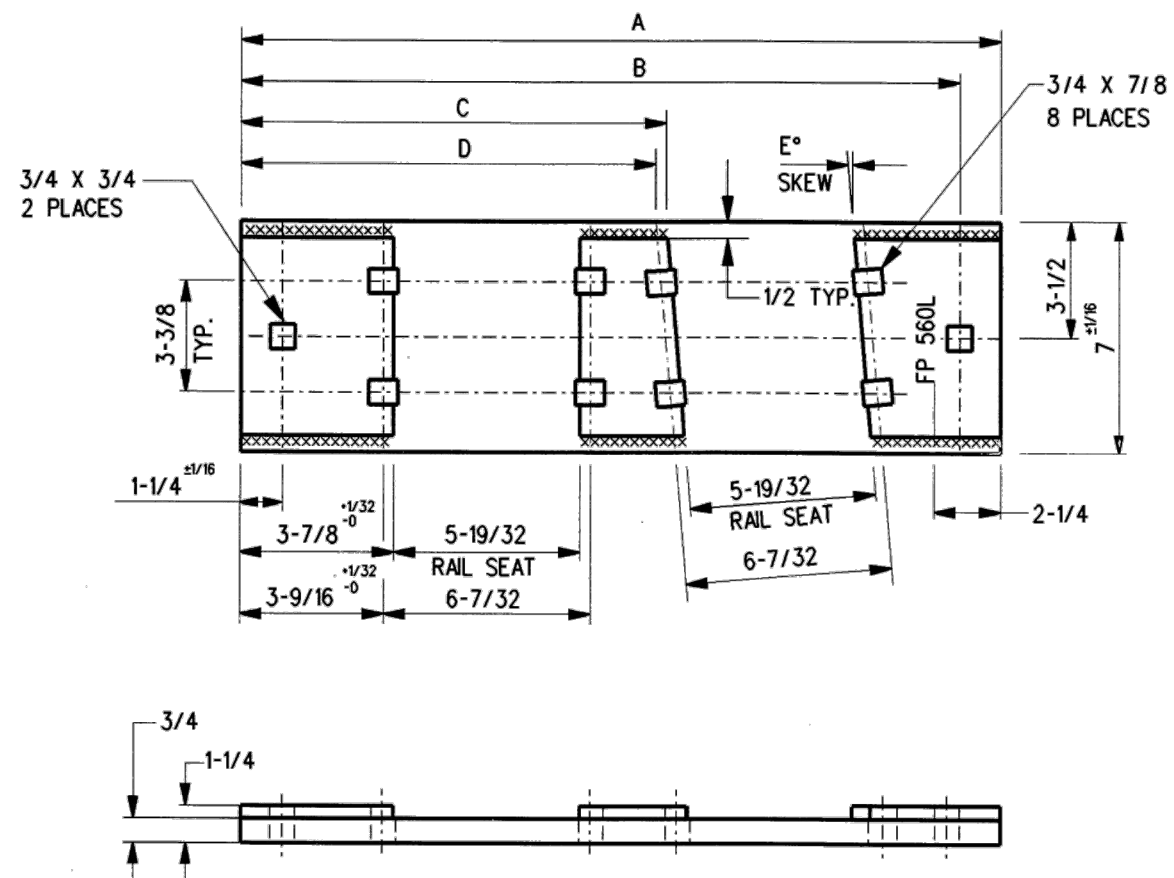
1	18/07/27	ADDED IMPERIAL TO METRIC CONVERSION NOTE
No.	Date	Revision
		By Approved

Standard / **FROG PLATES
RIGHT HAND**

Drawn MG Checked GGS Approved *[Signature]*
VP Engineering & Asset Management



Date DEC 15, 2017 Plan Number GTS-0619 Rev 1



NOTES

1. WHEN REFERRING TO FROG PLATES, PLAN AND PLATE NUMBERS MUST BE STATED TO INDICATE SPECIFIC PLATE REQUIRED.
2. IDENTIFICATION CHARACTERS (1/2" MINIMUM HEIGHT) TO BE STAMPED ON EACH PLATE AS SHOWN.
3. ALL DIMENSIONS ARE IN INCHES.
4. UNLESS OTHERWISE SPECIFIED ALL TOLERANCES TO BE ± 1/32.

MATERIAL

PLATES TO CONFORM TO THE LATEST REVISION OF GO TRANSIT TRACK STANDARDS OR IN GENERAL WITH LATEST REVISION OF A.S.T.M. SPECIFICATION FOR COMMERCIAL QUALITY HOT ROLLED BAR STEEL A-675 CHEMICAL REQUIREMENT.

	MINIMUM	MAXIMUM
CARBON	0.15 %	0.25 %
MANGANESE	0.30 %	0.60 %
PHOSPHORUS		0.04 %
SULPHUR		0.05 %

PLATES	A	B	C	D	E	WEIGHT (LBS.)	STOCK NUMBERS	
	±1/16		+0 -1/32	+0 -1/32			NEW	PART WORN
FP-560L	27-1/4	26	17-13/64	16-57/64	5°			
FP-561L	25-1/2	24-1/4	15-7/16	15-1/8	5°			
FP-562L	23-3/4	22-1/2	13-21/32	13-11/32	5°			
FP-563L	22-1/4	21	12-5/32	11-27/32	5°			
FP-566L	21	19-3/4	11-9/64	10-53/64	5°			
FP-567L	22-1/2	21-1/4	12-41/64	12-21/64	5°			
FP-568L	24	22-3/4	14-9/64	13-53/64	5°			
FP-569L	26	24-3/4	15-63/64	15-43/64	5°			
FP-570L	27-3/4	26-1/2	17-13/16	17-1/2	5°			
FP-591 L	26-3/4	25-1/2	16-3/4	16-7/16	6°			
FP-592 L	24-3/4	23-1/2	14-9/16	14-1/4	6°			
FP-593 L	22-3/4	21-1/2	12-3/4	12-7/16	6°			
FP-596 L	23	21-3/4	12-57/64	12-37/64	6°			
FP-597 L	24-1/2	23-1/4	14-21/32	14-11/32	6°			
FP-598 L	26	24-3/4	17	16-11/16	6°			
FP-632L	26-3/4	25-1/2	16-49/64	16-25/64	7°			
FP-633L	24-1/2	23-1/4	14-21/64	14-1/64	7°			
FP-636L	24-1/4	23	14-13/32	14-3/32	7°			

METRIC CONVERSION: 1 inch=25.4mm, 1 foot=304.8mm

1	18/07/27	ADDED IMPERIAL TO METRIC CONVERSION NOTE
No.	Date	Revision
		By Approved

Standard / **FROG PLATES LEFT HAND**

Drawn MG Checked GGS Approved *[Signature]*
VP Engineering & Asset Management



Date DEC 15, 2017 Plan Number GTS-0619 Rev 1