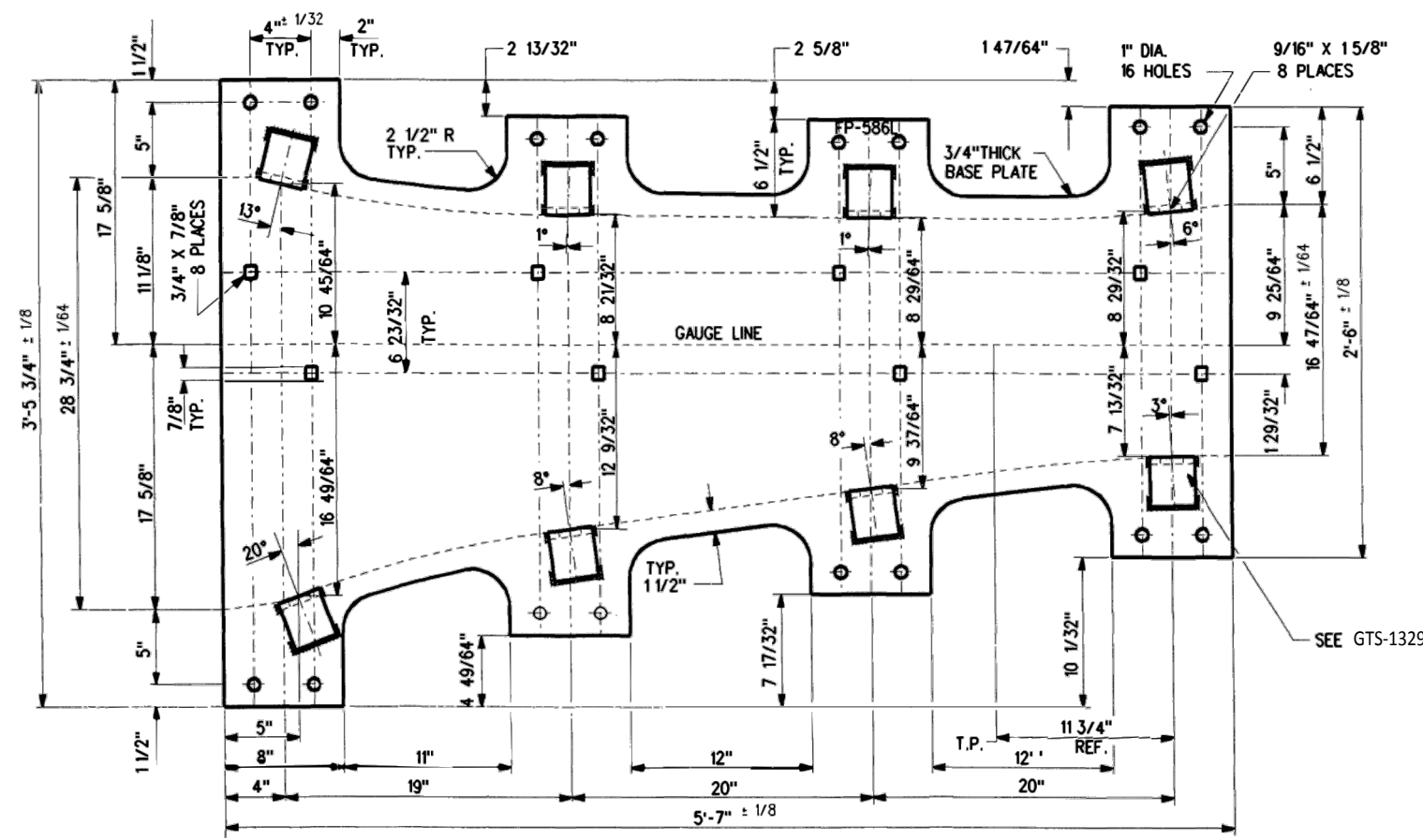
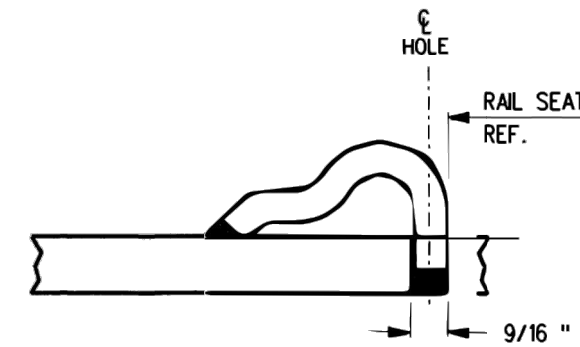


FROG  
BASE PLATE  
FP-586R



FROG  
BASE PLATE  
FP-586L



TYPICAL PANDROL SHOULDER  
INSTALLATION

**NOTES**

1. WHEN REFERRING TO FROG BASE PLATES, PLAN AND PLATE NUMBERS MUST BE STATED TO INDICATE SPECIFIC PLATE REQUIRED.
2. IDENTIFICATION CHARACTERS (1/2" MINIMUM HEIGHT) TO BE STAMPED ON EACH PLATE AS SHOWN.
3. UNLESS OTHERWISE SPECIFIED ALL DIMENSIONS ARE IN INCHES.

**MATERIAL**

PLATES TO CONFORM TO THE LATEST REVISION OF GO TRANSIT TRACK STANDARDS OR IN GENERAL WITH LATEST REVISION OF A.S.T.M. SPECIFICATION FOR COMMERCIAL QUALITY HOT ROLLED BAR STEEL A-675 CHEMICAL REQUIREMENT.

	MINIMUM	MAXIMUM
CARBON	0.15 %	0.25 %
MANGANESE	0.30 %	0.60 %
PHOSPHORUS		0.04 %
SULPHUR		0.05 %

METRIC CONVERSION: 1 inch=25.4mm, 1 foot=304.8mm

1	18/07/27	ADDED IMPERIAL TO METRIC CONVERSION NOTE	
No.	Date	Revision	By Approved

Standard/  
**MACHINING  
FROG BASE PLATES  
FOR NO 8 S.G.M. FROG 136 LB. R.E. RAILS**

Drawn MG Checked GS Approved *[Signature]*  
VP Engineering & Asset Management



**METROLINX**

Date DEC 15, 2017 Plan Number GTS-0628 Rev 1

REFERENCE: TS-628

Sheet 1 OF 1