

PLATES	A ±1/16	B	C +0 -1/32	D +0 -1/32	E -0 +1/32	F -0 +1/32	G	H	WEIGHT (LBS.)	STOCK NUMBERS	
										NEW	PART WORN
FP-639L	29	27-3/4	3-41/64	3-61/64	24-5/32	24-15/32	1°	8°			
FP-648L	30	28-3/4	3-61/64	4-17/64	25-5/16	25-5/8	6°	13°			

NOTES

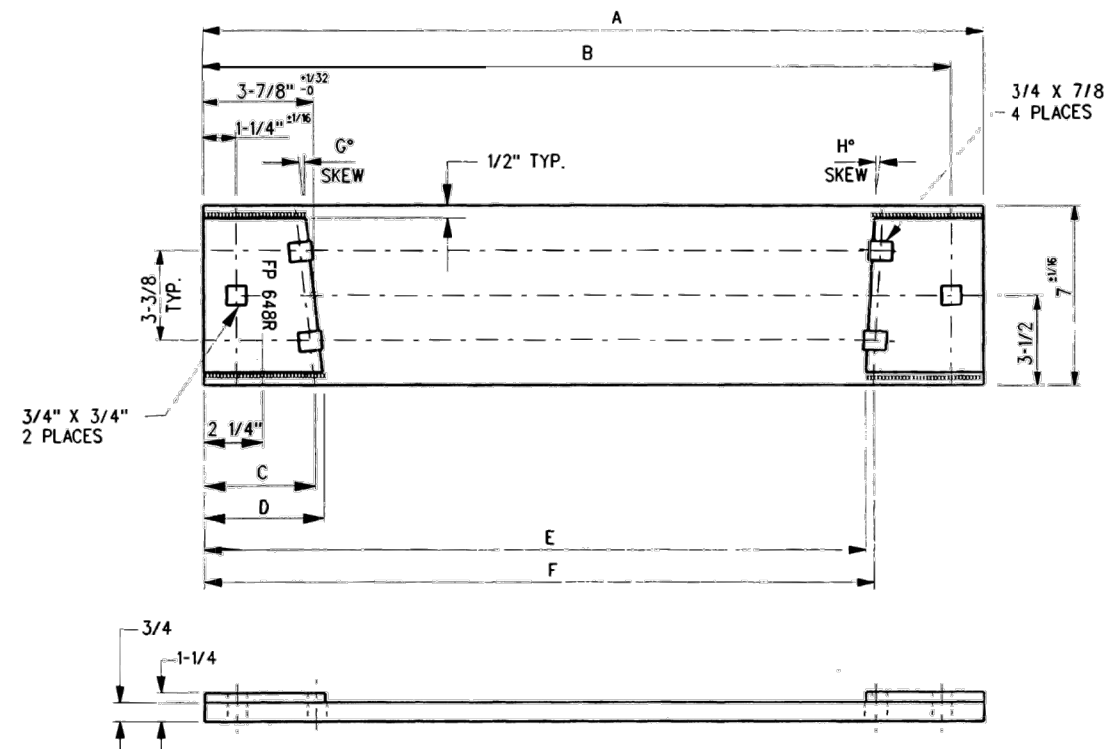
1. WHEN REFERRING TO FROG PLATES, PLAN AND PLATE NUMBERS MUST BE STATED TO INDICATE SPECIFIC PLATE REQUIRED.
2. IDENTIFICATION CHARACTERS (1/2" MINIMUM HEIGHT) TO BE STAMPED ON EACH PLATE AS SHOWN.
3. ALL DIMENSIONS ARE IN INCHES.
4. UNLESS OTHERWISE SPECIFIED ALL TOLERANCES TO BE ±1/32.

MATERIAL

PLATES TO CONFORM TO THE LATEST REVISION OF GO TRANSIT TRACK STANDARDS OR IN GENERAL WITH LATEST REVISION OF A.S.T.M. SPECIFICATION FOR COMMERCIAL QUALITY HOT ROLLED BAR STEEL A-675

	MINIMUM	MAXIMUM
CARBON	0.15 %	0.25 %
MANGANESE	0.30 %	0.60 %
PHOSPHORUS		0.04 %
SULPHUR		0.05 %

0	17/12/15	REVISED PDF VERSION ESTABLISHED	
No.	Date	Revision	By Approved
Standard		FROG PLATES	
		LEFT HAND	
Drawn	MG	Checked	GGG
Approved		VP Corridor Infrastructure	
Date	DEC 15, 2017	Plan Number	GTS-0667
		Rev	0
REFERENCE: TS-667		Sheet 2 OF 2	



NOTES

1. WHEN REFERRING TO FROG PLATES, PLAN AND PLATE NUMBERS MUST BE STATED TO INDICATE SPECIFIC PLATE REQUIRED.
2. IDENTIFICATION CHARACTERS (1/2" MINIMUM HEIGHT) TO BE STAMPED ON EACH PLATE AS SHOWN.
3. ALL DIMENSIONS ARE IN INCHES.
4. UNLESS OTHERWISE SPECIFIED ALL TOLERANCES TO BE ±1/32.

MATERIAL

PLATES TO CONFORM TO THE LATEST REVISION OF GO TRANSIT TRACK STANDARDS OR IN GENERAL WITH LATEST REVISION OF A.S.T.M. SPECIFICATION FOR COMMERCIAL QUALITY HOT ROLLED BAR STEEL A-675 CHEMICAL REQUIREMENT.

	MINIMUM	MAXIMUM
CARBON	0.15 %	0.25 %
MANGANESE	0.30 %	0.60 %
PHOSPHORUS		0.04 %
SULPHUR		0.05 %

PLATES	A	B	C	D	E	F	G	H	WEIGHT (LBS.)	STOCK NUMBERS	
	±1/16		+0 -1/32	+0 -1/32	-0 +1/32	-0 +1/32				NEW	PART WORN
FP-639R	29	27-3/4	3-41/64	3-61/64	24-5/32	24-15/32	1°	8°			
FP-648R	30	28-3/4	3-61/64	4-17/64	25-5/16	25-5/8	6°	13°			

0	17/12/15	REVISED PDF VERSION ESTABLISHED	
No.	Date	Revision	By Approved
Standard/		FROG PLATES	
		RIGHT HAND	
Drawn	MG	Checked	GGG
		Approved	<i>KBL</i> VP Corridor Infrastructure
Date	DEC 15, 2017	Plan Number	GTS-0667
		Rev	0
REFERENCE: TS-667		Sheet 1 OF 2	