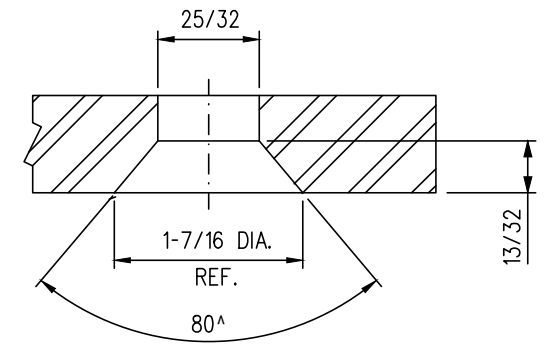


**TYPICAL SHOULDER INSTALLATION**



**COUNTERSINK DETAIL**



**FROG PLATE**

**NOTES**

1. WHEN REFERRING TO FROG PLATES, PLAN AND PLATE NUMBERS MUST BE STATED TO INDICATE SPECIFIC PLATE REQUIRED.
2. IDENTIFICATION CHARACTERS (1/2" MINIMUM HEIGHT) TO BE STAMPED ON EACH PLATE AS SHOWN.
3. ALL DIMENSIONS ARE IN INCHES.
4. UNLESS OTHERWISE SPECIFIED ALL TOLERANCES TO BE  $\pm 1/32$ .
5. TOLERANCES ARE NOT TO EXCEED THOSE INDICATED IN THE GO TOLERANCE DRAWINGS.
6. PLATE TO BE PAINTED WITH INSULATION PAINT ON 5 SIDES OF END AS SHOWN

**MATERIAL**

PLATES TO CONFORM TO THE LATEST REVISION OF A.S.T.M. SPECIFICATION A-36 FOR COMMERCIAL QUALITY HOT ROLLED BAR STEEL CHEMICAL REQUIREMENT.

	MINIMUM	MAXIMUM
CARBON	0.25 %	0.29 %
MANGANESE	0.60 %	1.20 %
PHOSPHORUS		0.04 %
SULPHUR		0.05 %
SILICON		0.40 %

PLATES	A	B	C	D	E	WEIGHT (LBS.)	STOCK NUMBER	REPLACED BY	
	$\pm 1/16$	$\pm 1/32$	$\pm 1/32$	$\pm 1/32$	$\pm 1/32$			MARK No.	GTS DWG.
FP-799L	42-9/16	12-1/2	18-5/32	12-13/16	17-5/8	81.0	01-25-342		
FP-805L	50-5/32	14-19/32	21	15-3/16	20-15/32	94.0	01-25-354		

0	17/09/15	DWG VERSION ESTABLISHED	
No.	Date	Revision	By Approved
Standard/		<b>FROG PLATES LEFT HAND</b>	
Drawn	PCV	Checked	DL
		Approved	<i>[Signature]</i> VP Corridor Infrastructure
Date	SEPT 15/2017	Plan Number	GTS-0694
		Rev	0
REFERENCE: TS-0694_SH4_R0		Sheet 4 OF 4	