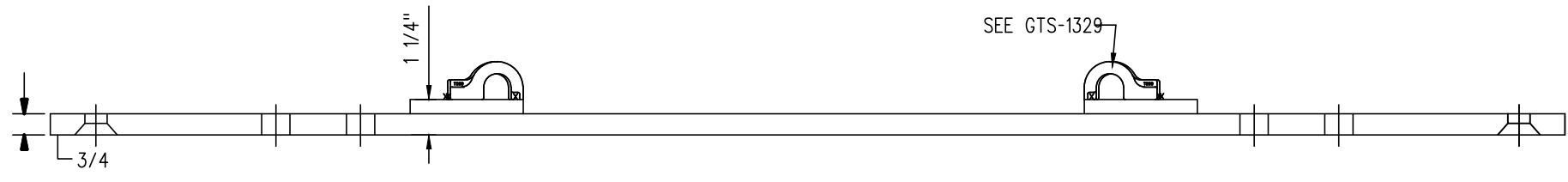


COUNTERSINK DETAIL



FROG PLATE

NOTES

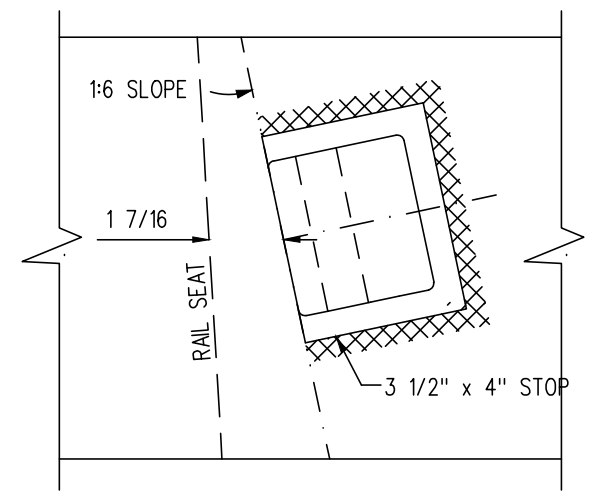
- 1. WHEN REFERRING TO FROG PLATES, PLAN AND PLATE NUMBERS MUST BE STATED TO INDICATE SPECIFIC PLATE REQUIRED.
- 2. IDENTIFICATION CHARACTERS (1/2" MINIMUM HEIGHT) TO BE STAMPED ON EACH PLATE AS SHOWN.
- 3. ALL DIMENSIONS ARE IN INCHES.
- 4. UNLESS OTHERWISE SPECIFIED ALL TOLERANCES TO BE  $\pm 1/32$ .
- 5. TOLERANCES ARE NOT TO EXCEED THOSE INDICATED IN THE GO TOLERANCE DRAWINGS.
- 6. PLATE TO BE PAINTED WITH INSULATION PAINT ON 5 SIDES OF END AS SHOWN

MATERIAL

PLATES TO CONFORM TO THE LATEST REVISION OF A.S.T.M. SPECIFICATION A-36 FOR COMMERCIAL QUALITY HOT ROLLED BAR STEEL CHEMICAL REQUIREMENT.

	MINIMUM	MAXIMUM
CARBON	0.25 %	0.29 %
MANGANESE	0.60 %	1.20 %
PHOSPHORUS		0.04 %
SULPHUR		0.05 %
SILICON		0.40 %

PLATES	A	B	C	D	E	WEIGHT (LBS.)	REPLACED BY	
	$\pm 1/16$	$\pm 1/32$	$\pm 1/32$	$\pm 1/32$	$\pm 1/32$		MARK No.	GTS DWG.
FP-857L	53-5/8	18-11/32	16-9/16	17-5/8	17-7/32	92.0		



TYPICAL SHOULDER INSTALLATION

0	17/09/15	DWG VERSION ESTABLISHED	
No.	Date	Revision	By Approved
Standard		<b>FROG PLATES RIGHT HAND</b>	
Drawn	PCV	Checked	DL
		Approved	<i>MSL</i> VP Corridor Infrastructure
Date	SEPT 15/2017	Plan Number	GTS-0694
		Rev	0
REFERENCE: CN_TS-0694 SHEET 7		Sheet 7 OF 8	