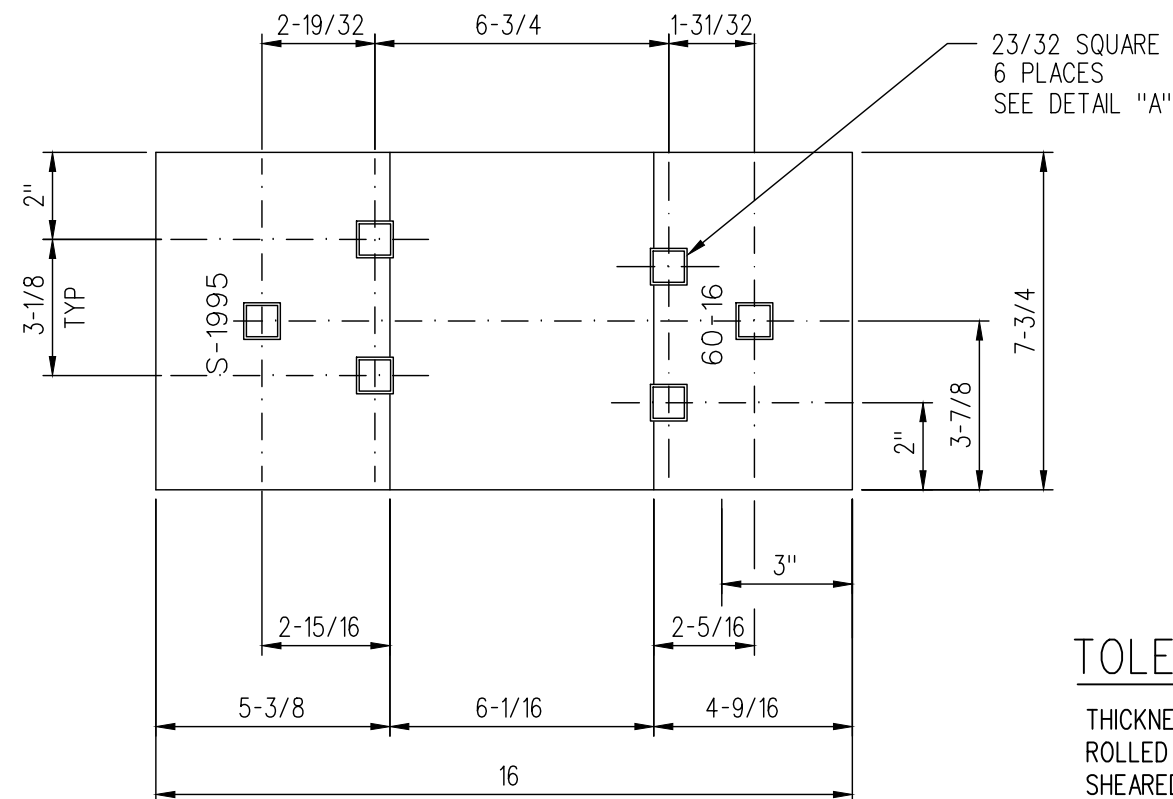


DETAIL "A"
TOLERANCE DETAILS OF SPIKE HOLES



16" TIE PLATE FOR 130/132/136 RAIL- 6" BASE WIDTH
WEIGHT- 27.81 LB/PLATE

TOLERANCES

	OVER	UNDER
THICKNESS	1/32	1/32
ROLLED WIDTH	1/8	1/8
SHEARED LENGTH	3/16	3/16
DISTANCE BETWEEN SHOULDERS	1/16	0
HEIGHT OF SHOULDERS	1/64	1/32
SIZE OF SPIKE HOLES	1/32	1/32
DISTANCE BETWEEN SPIKE HOLES	1/32	1/32
LOCATION OF SPIKE HOLES FROM GAUGING SIDE	1/32	1/32
FLATNESS OF RAIL SEAT	0.025	0.025

NOTES

1. MATERIAL TO CONFORM TO LATEST APPLICABLE AREMA SPECIFICATIONS FOR HIGH CARBON STEEL TIE PLATES.
2. ALL DIMENSIONS ARE IN INCHES.

MARKINGS

1. 1/2" MIN. PLATE IDENTIFICATION CHARACTERS TO BE BRANDED PLAINLY AS SHOWN.
2. THE MANUFACTURER'S IDENTIFICATION LETTER AND THE FIGURES OF THE YEAR TO BE BRANDED PLAINLY IN 1/2" MINIMUM CHARACTERS ON EACH PLATE.
3. MANUFACTURER'S IDENTIFICATION LETTERS:
S- ARKANSAS STEEL ASSOCIATES (SUMITOMO)
4. ALL CHARACTERS SHALL BE RAISED 1/32".

METRIC CONVERSION: 1 inch=25.4mm, 1 foot=304.8mm

1	18/07/27	ADDED IMPERIAL TO METRIC CONVERSION NOTE	
No.	Date	Revision	By Approved

Standard / **TIE PLATES
DOUBLE SHOULDER
FOR 130,132 AND 136 LB. RAILS**

Drawn GGS Checked RLB Approved *RLB*
VP Engineering & Asset Management



Date SEPT 15/2017 Plan Number GTS-0501 Rev 1

REFERENCE: TS-0501_2_R7 Sheet 2 OF 5