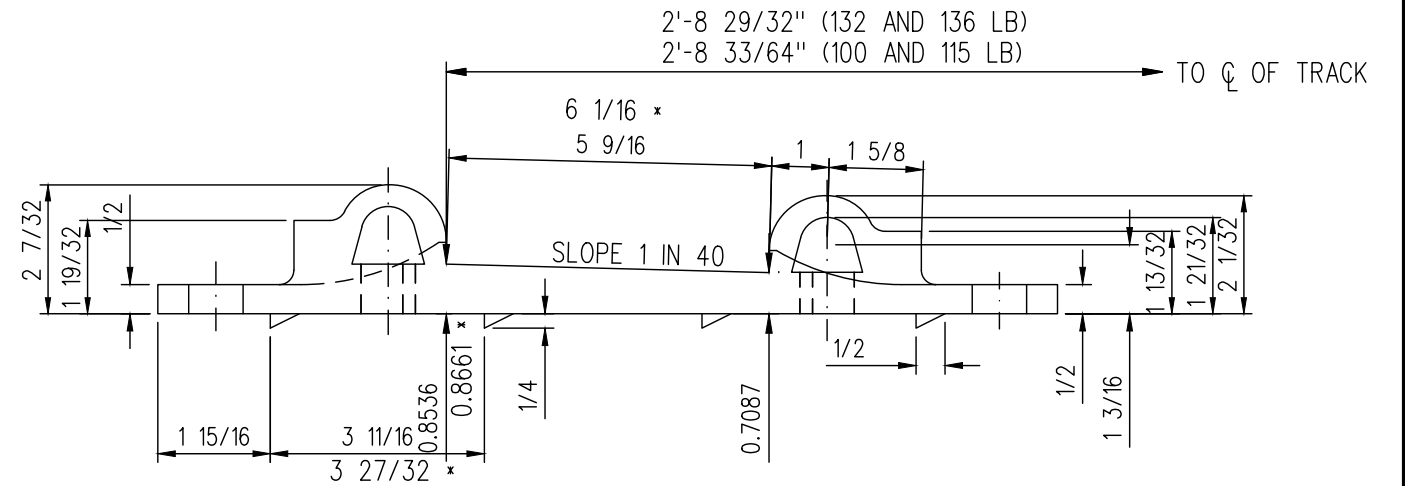
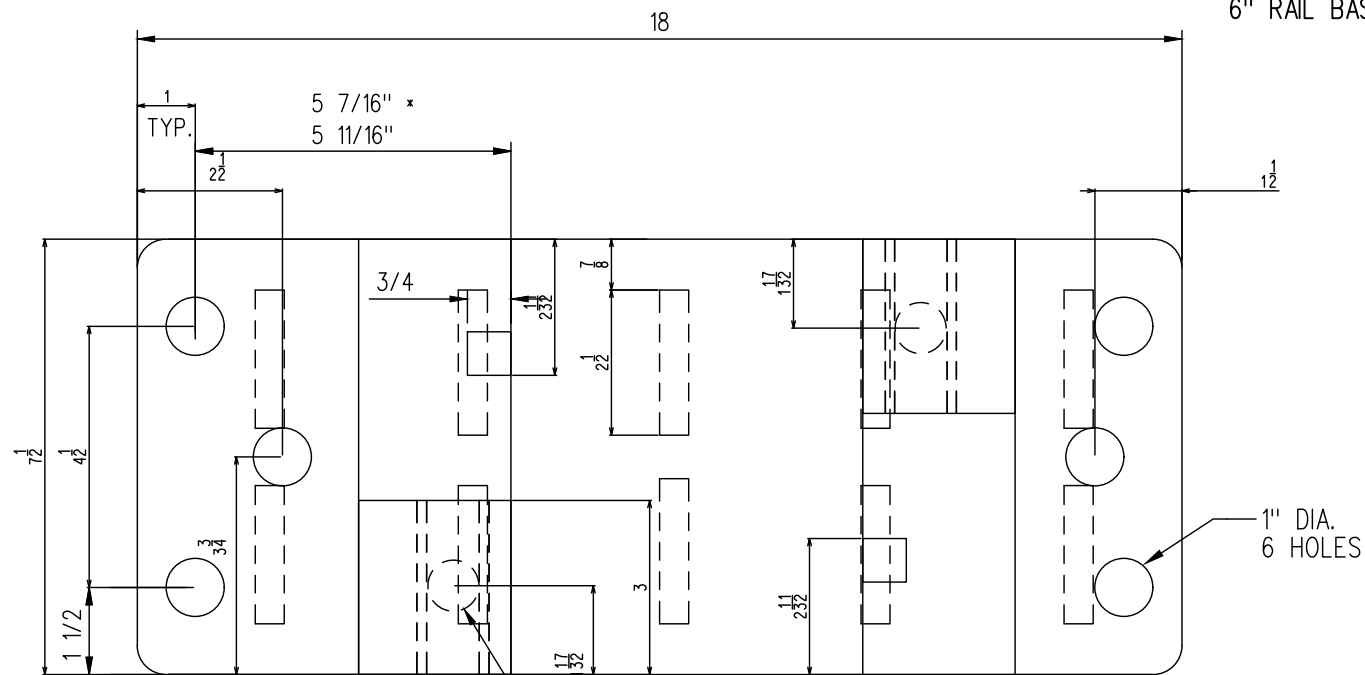


1" DIA.
6 HOLES



TIE PLATE

5 1/2" RAIL BASE: WEIGHT: 22.2
6" RAIL BASE: WEIGHT: 22.6

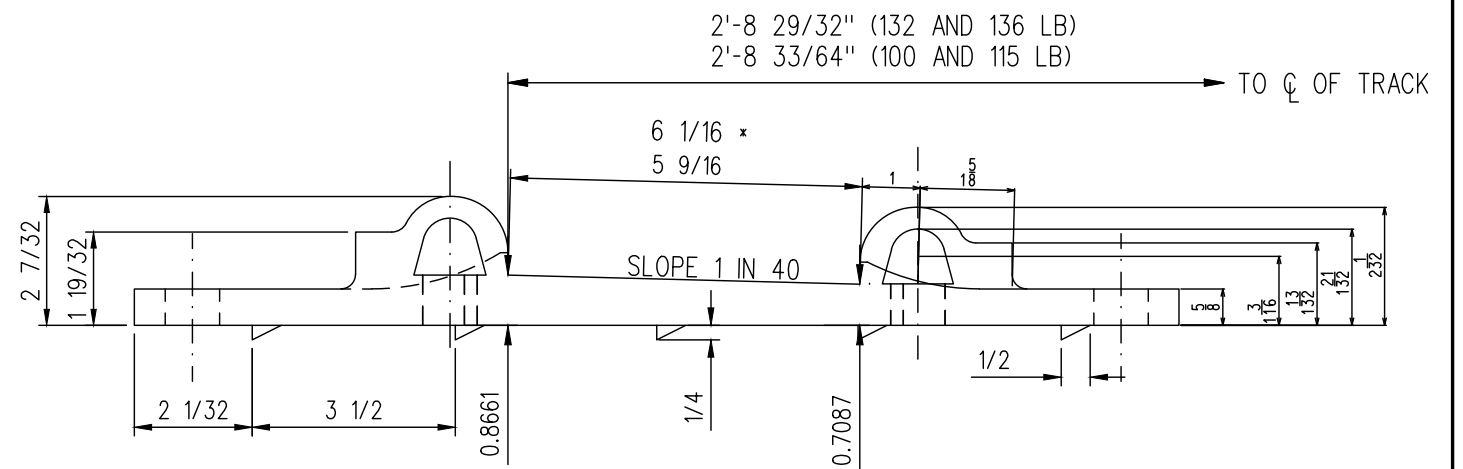


1" DIA.
6 HOLES

15/16" DIA.
2 HOLES

BRIDGE TIE PLATE

5 1/2" RAIL BASE: WEIGHT: 28.2
6" RAIL BASE: WEIGHT: 27.8



* FOR 132 AND 136 LB RAIL

METRIC CONVERSION: 1 inch=25.4mm, 1 foot=304.8mm

| | | | |
|-----|----------|--|-------------|
| 1 | 18/07/27 | ADDED IMPERIAL TO METRIC CONVERSION NOTE | |
| No. | Date | Revision | By Approved |

Standard / **MSR CAST TIE PLATES FOR 100,115,132 AND 136 LB. RAILS**

Drawn PCV Checked DL Approved *DL* VP Engineering & Asset Management



Date SEPT 15/2017 Plan Number GTS-0501 Rev 1

REFERENCE: TS-0501_4_R3 Sheet 4 OF 5