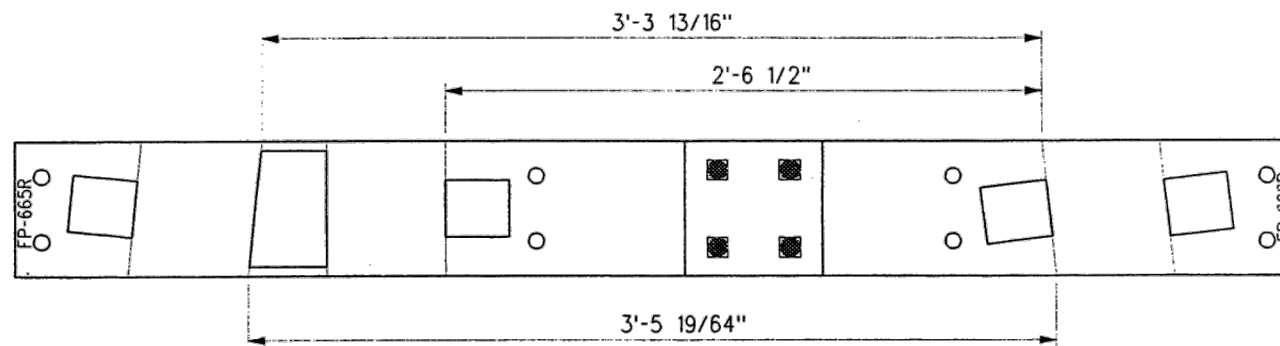
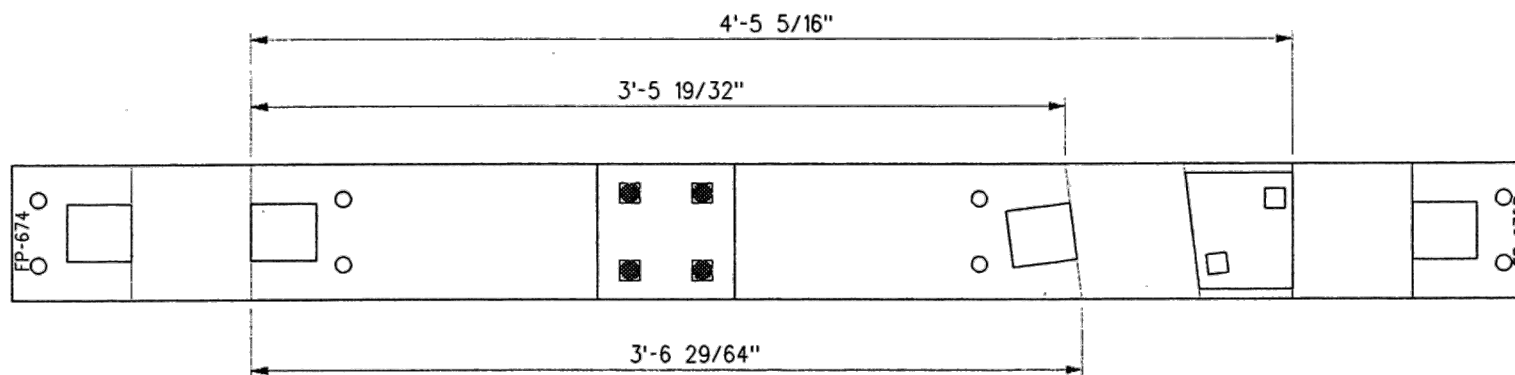


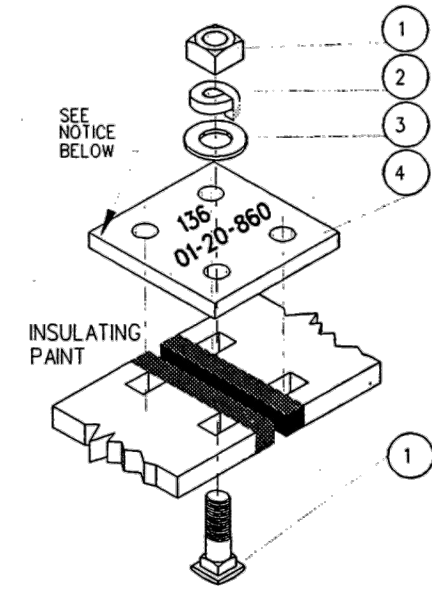
STOCK NO. NEW	STOCK NO. PARTLY WORN	ITEM NO.	DESCRIPTION	STANDARD PLAN NO.	QTY.
		1	1" DIA.-8 UNC. SQ. HD. (1/4" THICK) C.B. x 3 1/2" LONG C/W SO. NUT	GTS-1307/1	4
		2	SPRING WASHER FOR 1" DIA. BOLT	GTS-1301	4
		3	PL. WASHER FOR 1" DIA. BOLT(1-1/16" I.D. x 2-1/2" O.D x 5/32" THK)	GTS-1337	4
		4	INSULATION PLATE 136	GTS-0526	1
		-	FROG GAUGE PLATE GP-665R	GTS-0686	1
		-	FROG GAUGE PLATE GP-666R	GTS-0687	1
		-	FROG GAUGE PLATE GP-674	GTS-0601	1
		-	FROG GAUGE PLATE GP-675R	GTS-0685	1



FROG GAUGE PLATES
GP-665R/GP666R



FROG GAUGE PLATES
GP-674/GP675R



DETAIL
TYPICAL GAUGE PLATE
INSULATED JOINT ASSEMBLY

NOTES:

DIELECTRIC REQUIREMENT.
DIELECTRIC TESTS SHALL BE MADE WITH THE INSULATION DRY. ASSEMBLED INSULATED TRACK FITTINGS SHALL WITHSTAND FOR NOT LESS THAN THREE SECONDS AN INSULATED TEST OF 1500 VOLTS A.C. WITHOUT FLASH OVER OR PUNCTURE BETWEEN ALL METALLIC PARTS AND OTHER METALLIC PARTS INSULATED THEREFROM.

WHEN REFERRING TO A COMPLETE GAUGE PLATE ASSEMBLY AS SHOWN, MARK NUMBER OF BOTH GAUGE PLATE HALVES MUST BE STATED (EX. GP665R/GP666R) TO IDENTIFY THE ACTUAL GAUGE PLATE.

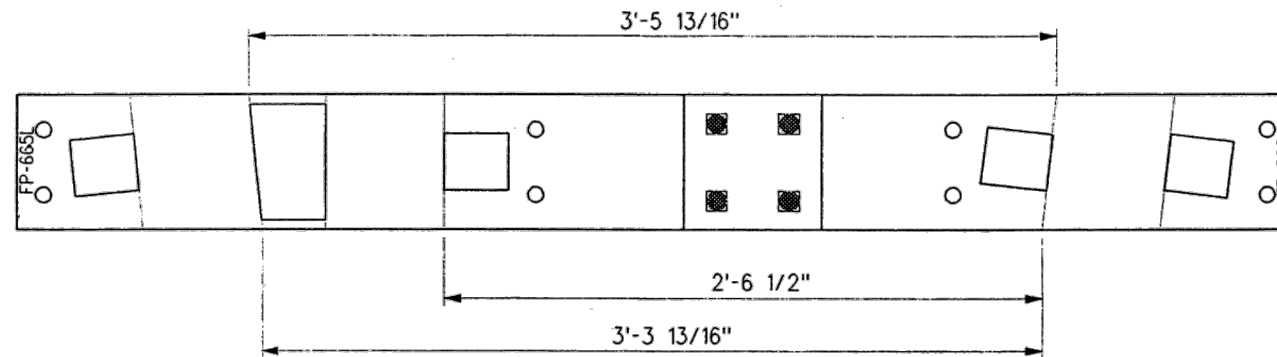
THE RIGHT SIDE GAUGE PLATE HALF IS STATED FIRST IN ALL INSTANCES.

0	17/12/15	REVISED PDF VERSION ESTABLISHED	
No.	Date	Revision	By Approved
Standard	ASSEMBLY FOR RIGHT HAND FROG GAUGE PLATES NO.8 ON 10 LAP TURNOUT 136 LB.RAILS		
Drawn	MG	Checked	Approved
		GGG	VP Corridor Infrastructure
Date		Plan Number	Rev
DEC 15, 2017		GTS-0696	0
REFERENCE: TS-696		Sheet 1 OF 2	

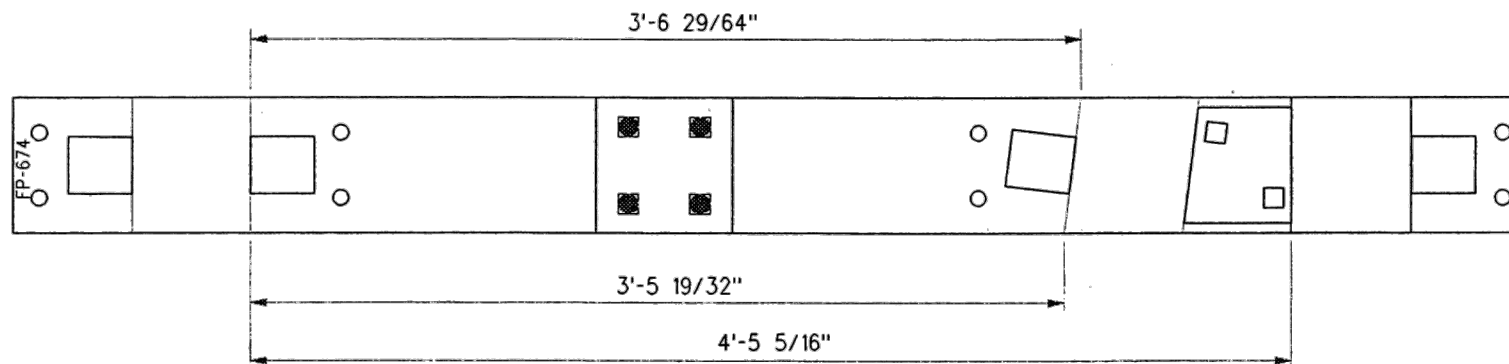


METROLINX

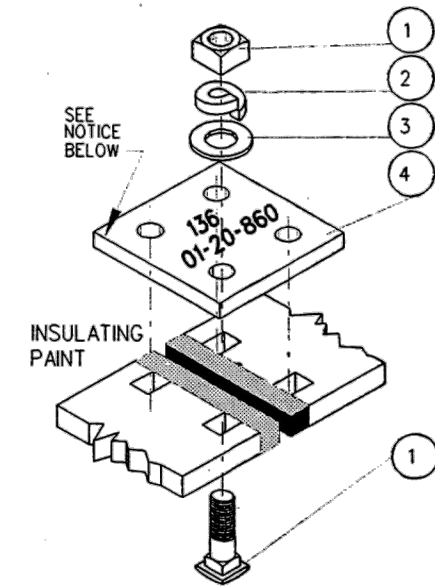
STOCK NO. NEW	STOCK NO. PARTLY WORN	ITEM NO.	DESCRIPTION	STANDARD PLAN NO.	QTY.
		1	1" DIA.-8 UNC. SQ. HD. (1/4" THICK) C.B.x 3 1/2" LONG C/W SQ. NUT	GTS-1307/1	4
		2	SPRING WASHER FOR 1" DIA. BOLT	GTS-1301	4
		3	PL.WASHER FOR 1" DIA. BOLT (1- 1/16" I.D.x2- 1/2" O.D x 5/32" THK)	GTS-1337	4
		4	INSULATION PLATE 136	GTS-0526	1
		-	FROG GAUGE PLATE GP-665L	GTS-0686	1
		-	FROG GAUGE PLATE GP-666L	GTS-0687	1
		-	FROG GAUGE PLATE GP-674	GTS-0601	1
		-	FROG GAUGE PLATE GP-675L	GTS-0685	1



FROG GAUGE PLATES
GP-665L/GP666L



FROG GAUGE PLATES
GP-674/GP675L



DETAIL
TYPICAL GAUGE PLATE
INSULATED JOINT ASSEMBLY

NOTES:

DIELECTRIC REQUIREMENT.
DIELECTRIC TESTS SHALL BE MADE WITH THE INSULATION DRY.
ASSEMBLED INSULATED TRACK FITTINGS SHALL WITHSTAND FOR NOT LESS THAN THREE SECONDS AN INSULATED TEST OF 1500 VOLTS A.C. WITHOUT FLASH OVER OR PUNCTURE BETWEEN ALL METALLIC PARTS AND OTHER METALLIC PARTS INSULATED THEREFROM.

WHEN REFERRING TO A COMPLETE GAUGE PLATE ASSEMBLY AS SHOWN, MARK NUMBER OF BOTH GAUGE PLATE HALVES MUST BE STATED (EX. GP665L/GP666L) TO IDENTIFY THE ACTUAL GAUGE PLATE.
THE RIGHT SIDE GAUGE PLATE HALF IS STATED FIRST IN ALL INSTANCES.

0	17/12/15	REVISED PDF VERSION ESTABLISHED	
No.	Date	Revision	By Approved
Standard	ASSEMBLY FOR LEFT HAND FROG GAUGE PLATES NO.8 ON 10 LAP TURNOUT 136 LB.RAILS		
Drawn	MG	Checked	Approved
		GGG	KBL/VP Corridor Infrastructure
Date		Plan Number	Rev
DEC 15, 2017		GTS-0696	0
REFERENCE: TS-696		Sheet 2 OF 2	



METROLINX