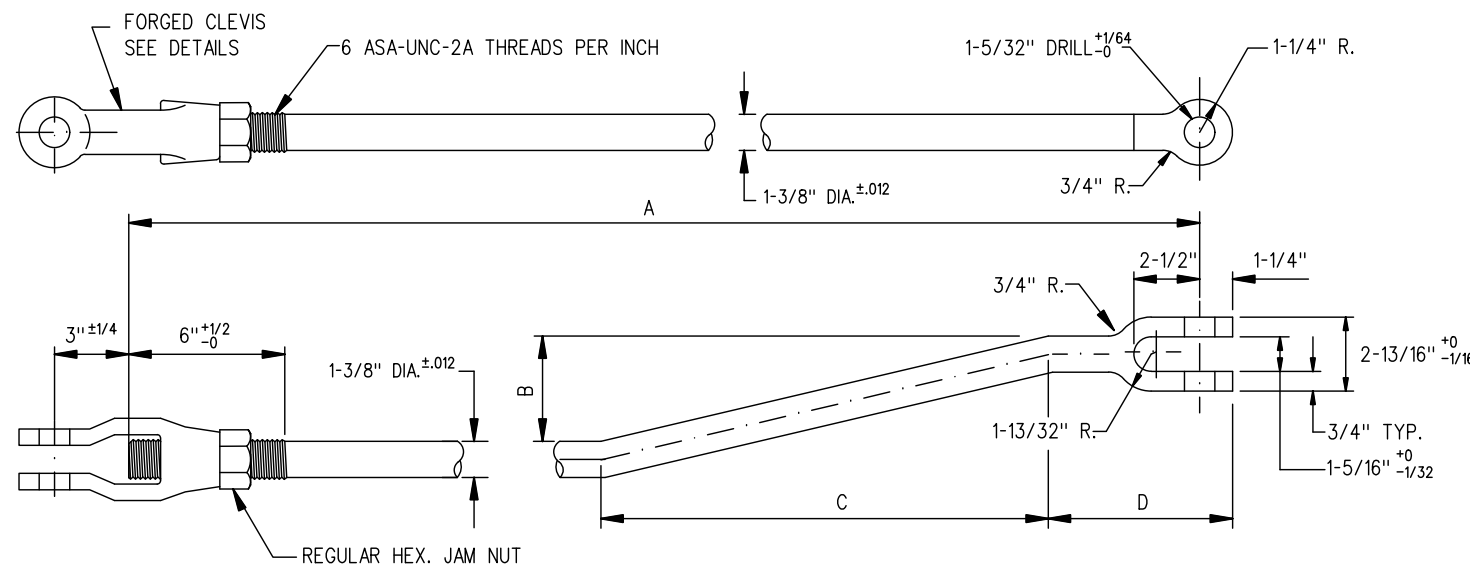


CONNECTING RODS - 13/16" JAW OPENING

COMPLETE ROD WITH CLEVIS AND NUT

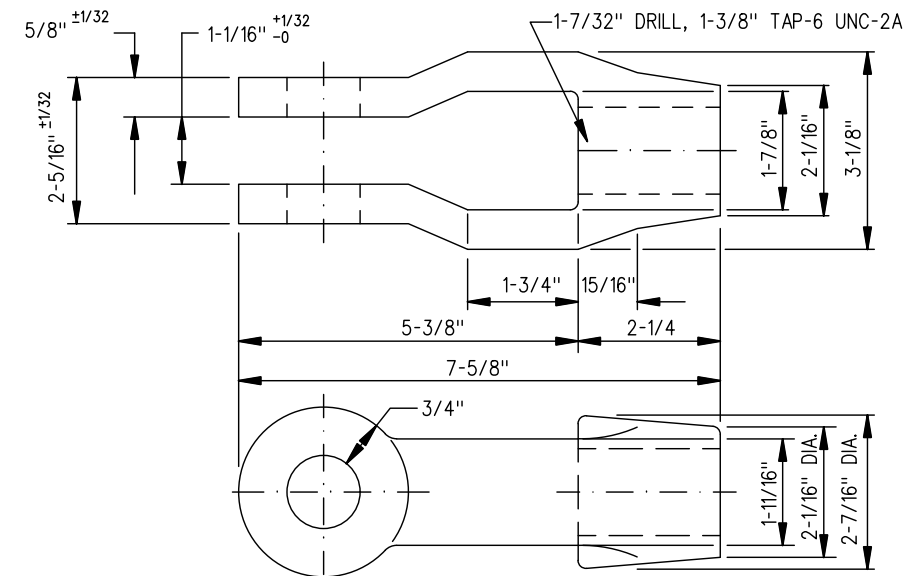
ROD NO.	A ±1/8	B ± 1/8	C	WEIGHT LBS.
713A	8'-1"	3"	45°	47.9
713B	8'-1"	1 1/8"	20°	47.5
713C	5'-7"	1 1/8"	20°	35.2



CONNECTING RODS - 1 5/16" JAW OPENING

COMPLETE ROD WITH CLEVIS AND NUT

ROD NO.	A ±1/8	B ±1/8	C ±1/8	D ±1/8	WEIGHT LBS.
703A	6'-1 1/2"	-	-	-	37.5
703B	5'-1 1/2"	-	-	-	32.5
703C	3'-7 1/2"	3/4"	6"	11 1/4"	24.9
703D	2'-7 1/2"	3/4"	6"	11 1/4"	19.9
703E	6'-5"	4"	17"	7"	39.0
703F	12'-0"	-	-	-	67.1



FORGED CLEVIS

PER ABEX PART NUMBER GL-1872 WEIGHT 5.32 LBS.

NOTES:

BOLT HOLES MUST BE DRILLED IN CONNECTING RODS AND CLEVISSES. THE USE OF ACETYLENE TORCH OR OTHER BURNING METHOD, FOR THE CUTTING OR MAKING OF HOLES IN THE MANUFACTURE OF CONNECTING RODS, IS ABSOLUTELY PROHIBITED. WHEN REFERRING TO CONNECTING RODS, DRAWING NUMBER MUST BE STATED AS A, B, C, D, ETC. , TO INDICATE SPECIFIC ROD REQUIRED. WELDING ON ANY PORTION OF THE CONNECTING ROD IS ABSOLUTELY PROHIBITED, UNLESS IT IS USED FOR REPAIRING A DEFECT (SEE INSPECTION)

MATERIAL:

(ROD) BAR STOCK TO CONFORM TO THE LATEST REVISION OF C.N.R. SPECIFICATION 150-1 CLASS C, OR IN GENERAL WITH LATEST REVISION OF A.S.T.M. SPECIFICATION FOR COMMERCIAL QUALITY HOT ROLLED BAR STEEL, A107.

CHEMICAL REQUIREMENT:	MIN.	MAX.
CARBON	0.15 %	0.25 %
MANGANESE	0.30 %	0.60 %
PHOSPHORUS		0.04 %
SULPHUR		0.05 %

INSPECTION:

FORGED JAW END PLUS 3" BACK ON SHANK SHALL BE MAGNETIC PARTICLE TESTED AND RODS CONTAINING DEFECTS SUCH AS LAPS, SEAMS, ETC. EXCEEDING 1/8" IN DEPTH SHALL BE REJECTED. DEFECTS UP TO 1/8" IN DEPTH MAY BE REPAIRED BY FIRST GRINDING OR CHIPPING TO COMPLETELY REMOVE THE DEFECT AND WELD WITH AN E60 OR E70 SERIES ROD. AFTER WELDING, THE REPAIRED AREA MUST BE GROUND SMOOTH AND RETESTED AND ANY FURTHER INDICATION OF ANY DEFECT WILL BE CAUSE FOR REJECTION OF THE ROD.

THIS DRAWING SUPERSEDES DRAWING DATED 23 DEC. 1971 REVISED AUG.'78

No.	Date	Revision	By	Approved
0	17/09/15	DWG VERSION ESTABLISHED		
Standard / CONNECTING RODS				
Drawn	MG	Checked	GGS	Approved <i>MBL</i> VP Corridor Infrastructure
		METROLINX		
Date	SEPT 15/2017	Plan Number	GTS-0703	Rev 0
REFERENCE: TS-703_R2			Sheet 1 OF 1	

FOR ADDITIONAL INFORMATION E-MAIL "TRACKSTD"