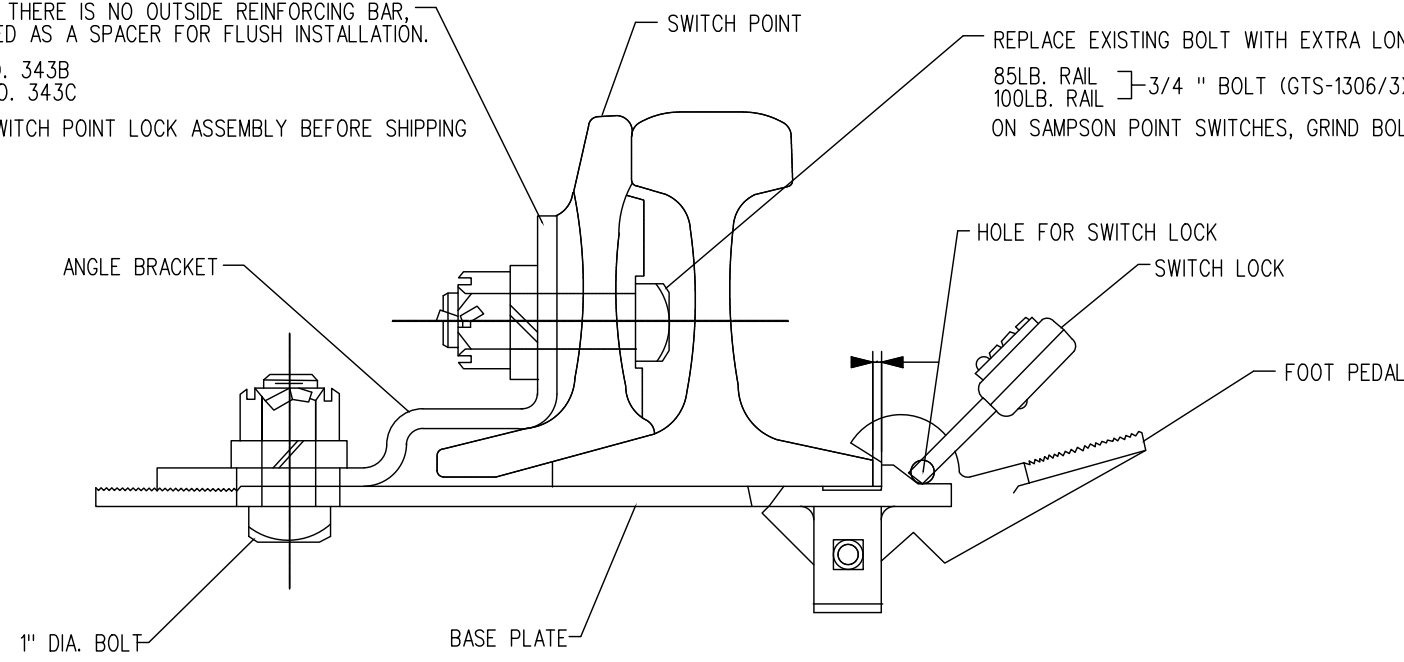


ON 85 LB. AND 100LB. SWITCH POINTS THERE IS NO OUTSIDE REINFORCING BAR, THEREFORE A SPECIAL SHIM IS PROVIDED AS A SPACER FOR FLUSH INSTALLATION.
 ON 85LB. SWITCH POINTS USE SHIM NO. 343B
 ON 100LB. SWITCH POINTS USE SHIM NO. 343C
 THESE SHIMS TO BE ADDED TO THE SWITCH POINT LOCK ASSEMBLY BEFORE SHIPPING TO FIELD.



TYPE 1 - 85 & 100 lb.

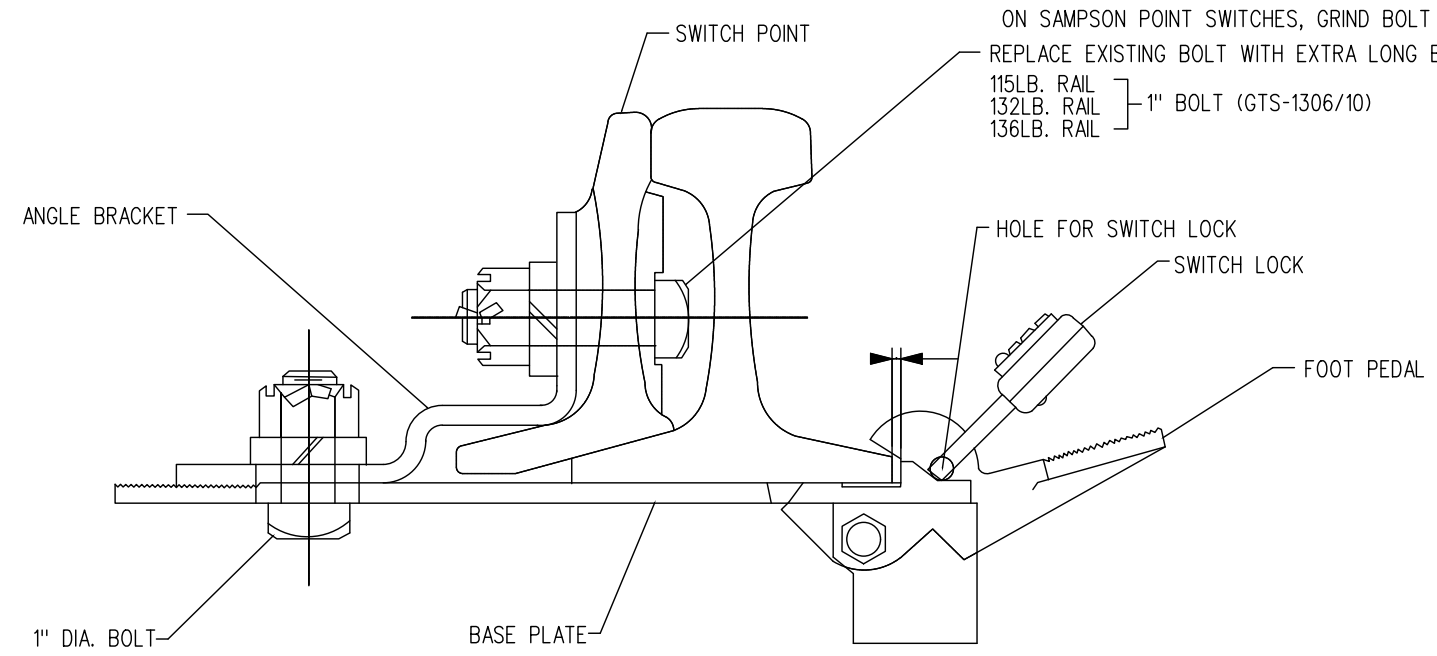
REPLACE EXISTING BOLT WITH EXTRA LONG BOLT SUPPLIED.
 85LB. RAIL } 3/4" BOLT (GTS-1306/3)
 100LB. RAIL }
 ON SAMPSON POINT SWITCHES, GRIND BOLT HEAD AS REQUIRED TO OBTAIN CLEARANCE.

INSTALLATION PROCEDURE

- REMOVE HARDWARE FROM FIFTH HOLE OF SWITCH POINT. NOTE: ON 136LB. THICK WEB SWITCH POINTS, AN ADDITIONAL HOLE HAS BEEN PROVIDED TO ACCOMMODATE THE SWITCH POINT LOCK. IN SOME OLDER THICK WEB POINTS THIS HOLE MAY BE ABSENT AND REQUIRE FIELD DRILLING. THE HOLE SHOULD BE CENTRED IN THE CRIB, DRILLED 2 1/8" ABOVE THE BASE OF RAIL. ALL PRECAUTIONS LISTED IN RM 3700-0 SHOULD BE FOLLOWED WHEN DRILLING RAIL.
- REMOVE BASE PLATE FROM LOCK ASSEMBLY AND ATTACH ANGLE BRACKET TO FIFTH HOLE WITH SWITCH POINT IN OPEN POSITION.
- CLOSE SWITCH POINT AND ASSEMBLE BASE PLATE TO ANGLE BRACKET WITH FOOT PEDAL IN THE "UP" POSITION, ALLOWING ABOUT 1/8" CLEARANCE BETWEEN OUTSIDE BASE OF RAIL AND THE SHOULDER ON THE BASE PLATE BEFORE BOLT IS TIGHTENED. TIGHTEN 1" BOLT UNTIL ANGLE BRACKET AND BASE PLATE FACES ARE IN FULL CONTACT.

NOTES

1. SWITCH POINT LOCKS ARE TO INSTALLED WHERE REQUIRED PER GO TRACK STANDARDS 3500.
2. WHEN ORDERING SWITCH POINT LOCKS: STATE TYPE OF LOCK REQUIRED AS RAILS CO. NO.1 OF NO.2 WITH APPROPRIATE STOCK NUMBER
3. WHEN ORDERING SWITCH POINT LOCKS, SWITCH LOCK IS NOT INCLUDED AND MUST BE ORDERED SEPARATELY IF REQUIRED



TYPE 2 - 115, 132 & 136 lb.

ON SAMPSON POINT SWITCHES, GRIND BOLT HEAD AS REQUIRED TO OBTAIN CLEARANCE.
 REPLACE EXISTING BOLT WITH EXTRA LONG BOLT SUPPLIED.
 115LB. RAIL } 1" BOLT (GTS-1306/10)
 132LB. RAIL }
 136LB. RAIL }

SWITCH POINT - CLOSED POSITION-LOCKED

TO CHECK THE OPERATION OF THE SWITCH POINT LOCK PUT FOOT ON LEVER AND PUSH DOWN, THEN OPERATE SWITCH STAND LEVER IN USUAL MANNER TO THROW OR OPEN SWITCH. TO CLOSE THE SWITCH, OPERATE THE SWITCH STAND LEVER IN THE USUAL MANNER AND THE DEVICE SHOULD AUTOMATICALLY RETURN TO IGTS NORMAL OR LOCKED POSITION

0	17/09/15	DWG VERSION ESTABLISHED	
No.	Date	Revision	By Approved
Standard		INSTALLATION DETAILS RAILS CO. TYPE SWITCH POINT LOCK FOR 85, 100, 115 & 132 LB. RAILS	
Drawn	GGS	Checked	GWM
		Approved	<i>[Signature]</i> VP Corridor Infrastructure
Date		Plan Number	Rev
SEPT 15/2017		GTS-0711	0
REFERENCE: TS-0711_R3		Sheet 1 OF 1	

