

ITEM	STOCK NUMBERS		A	B	C	D	E	F	G	H	WT. LBS.
	NEW	PARTLY WORN	DIA. ±1/16	±1/16	±1/32	±1/32			+0 -1/16 RADIUS		
836 A			1-1/4	3-1/8	3	9/16	1-9/16	1/16	2	8	1.65
836 C			1-1/4	3-1/8	3-1/32	11/16	1-9/16	3/64	2	8	1.83
836 G			1-3/8	3-13/16	3-11/16	9/16	1-29/32	1/16	2-3/16	14	2.03
836 J			1-3/8	3-13/16	3-23/32	11/16	1-29/32	3/64	2-3/16	14	2.25

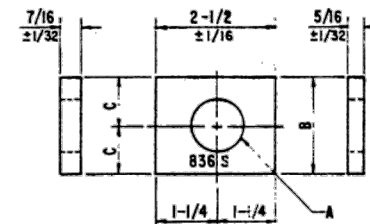
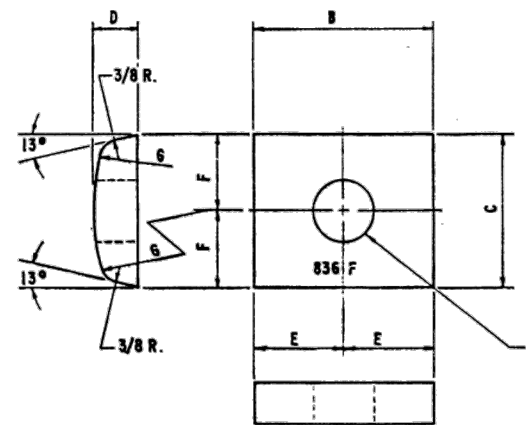
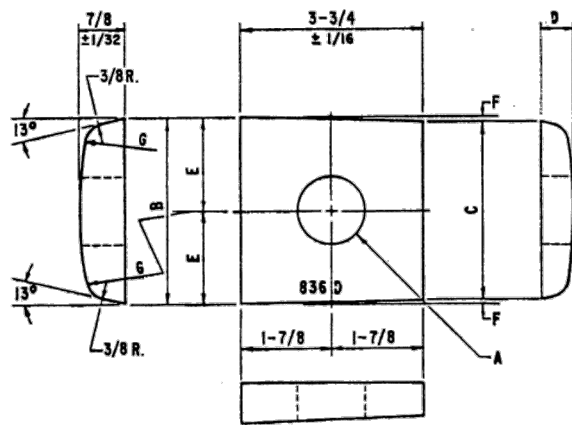
ITEM	STOCK NUMBERS		A	B	C	D	E	WT. LBS.
	NEW	PARTLY WORN	DIA. ±1/16	±1/16	±1/16	+0 -1/16 RADIUS		
836 E			1-1/4	3-1/8	1-9/16	2	8	2.10
836 L			1-3/8	3-13/16	1-29/32	2-3/16	14	2.59

ITEM	STOCK NUMBERS		A	B	C	D	E	F	G	WT. LBS.
	NEW	PARTLY WORN	DIA. ±1/16	±1/16	±1/16	+1/32-0			RADIUS	
836 N			1-5/16	3-1/8	1-3/4	1	1-1/8	11/16	14	1.04
836 P			1-1/16	2-11/16	1-1/2	13/16	1	13/16	14	0.93

HEAD WASHER - BEVELLED

HEAD WASHER - NOT BEVELLED

HEAD LOCK WASHER



NOTES:
 - ALL DIMENSIONS ARE IN INCHES.
 - WHEN REFERRING TO WASHERS, DRAWING NUMBER MUST BE STATED AS A, B, C, ETC... TO INDICATE SPECIFIC WASHER REQUIRED.
 - IDENTIFICATION CHARACTERIS, 1/4" HIGH MINIMUM - RAISED 1/32", TO BE CLEARLY CAST ON EACH WASHER AS SHOWN.

MATERIAL:
 - WASHERS TO BE OF MALLEABLE IRON TO THE LATEST REVISION OF ASTM SPECIFICATION A47-68, GRADE 32510 OR DUCTILE IRON TO THE LATEST REVISION OF ASTM SPECIFICATION A536-70, GRADE 60-45-10.

ITEM	STOCK NUMBERS		A	B	C	WT. LBS.
	NEW	PARTLY WORN	DIA. ±1/16	+0 -1/16		
836 R	01-09-945	01-09-946	15/16	2	1	0.46
836 S			1-1/16	2	1	0.44
836 T			1-3/16	2-1/4	1-1/8	0.48

TAIL WASHER - BEVELLED

ITEM	STOCK NUMBERS		A	B	C	D	E	F	G	WT. LBS.
	NEW	PARTLY WORN	DIA. ±1/16	±1/16	±1/32	±1/32			RADIUS	
836 B			1-1/4	3-1/8	3	9/16	1-9/16	1/16	8	1.84
836 D			1-1/4	3-1/8	3-1/32	11/16	1-9/16	3/64	8	2.02
836 H			1-3/8	3-13/16	3-11/16	9/16	1-29/32	1/16	14	2.26
836 K			1-3/8	3-13/16	3-23/32	11/16	1-29/32	3/64	14	2.48

ITEM	STOCK NUMBERS		A	B	C	D	E	F	G	WT. LBS.
	NEW	PARTLY WORN	DIA. ±1/16	±1/16	±1/16	±1/32			RADIUS	
836 F			1-1/4	3-3/4	3-1/8	7/8	1-7/8	1-9/16	8	2.30
836 M			1-3/8	3-3/4	3-13/16	7/8	1-7/8	1-29/32	14	2.82
836 Q			1-1/16	3	3-3/4	3/4	1-1/2	1-7/8	14	1.96

TAIL WASHER - NOT BEVELLED

TAIL WASHER - BEVELLED

METRIC CONVERSION: 1 inch=25.4mm, 1 foot=304.8mm

1	18/07/27	ADDED IMPERIAL TO METRIC CONVERSION NOTE
No.	Date	Revision
		By Approved

Standard / HEAD & TAIL WASHERS FOR 85 - 136 LB. FROGS & GUARD RAILS

Drawn MG Checked GGS Approved VP Engineering & Asset Management



Date DEC 15, 2017 Plan Number GTS-0836 Rev 1

REFERENCE: TS-836 A/T Sheet 1 OF 1