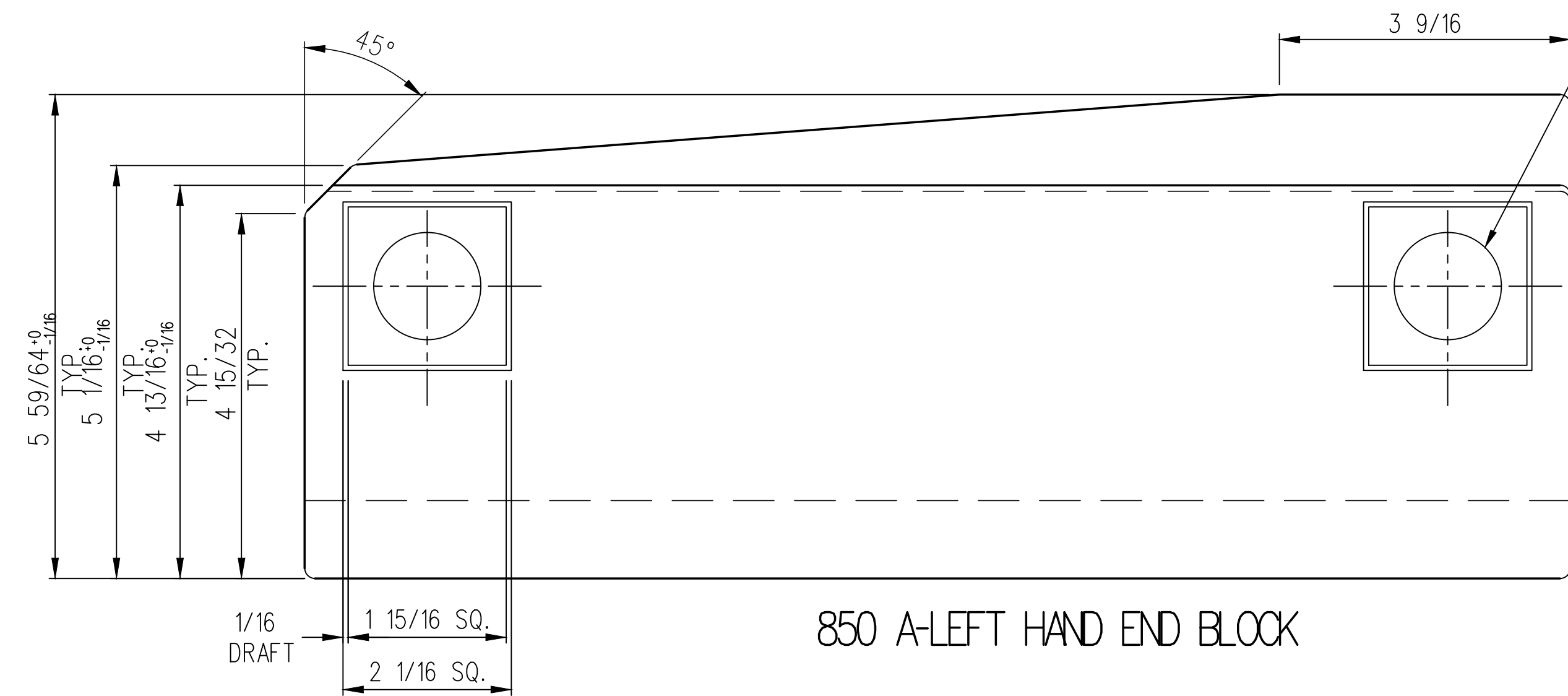
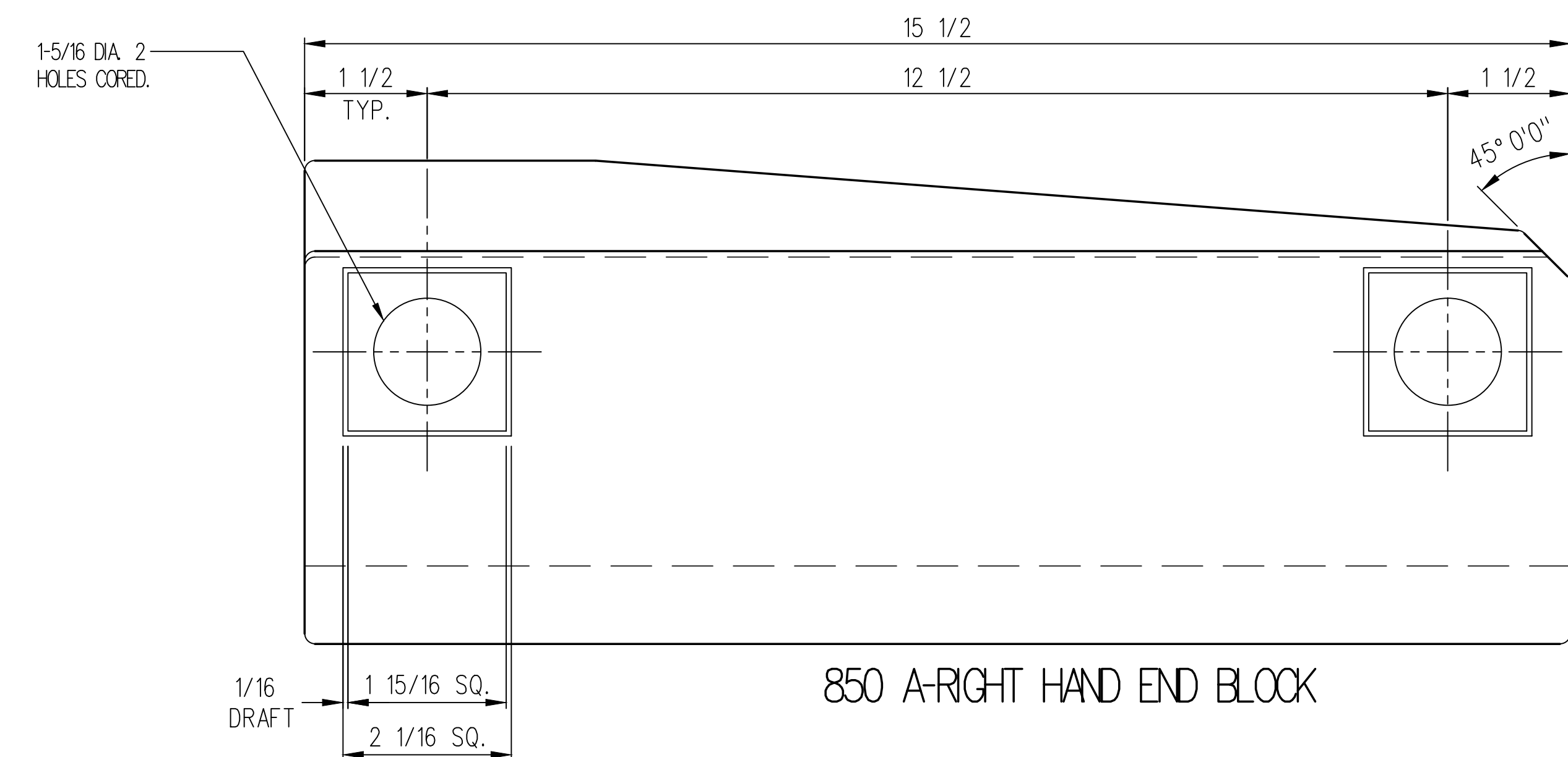


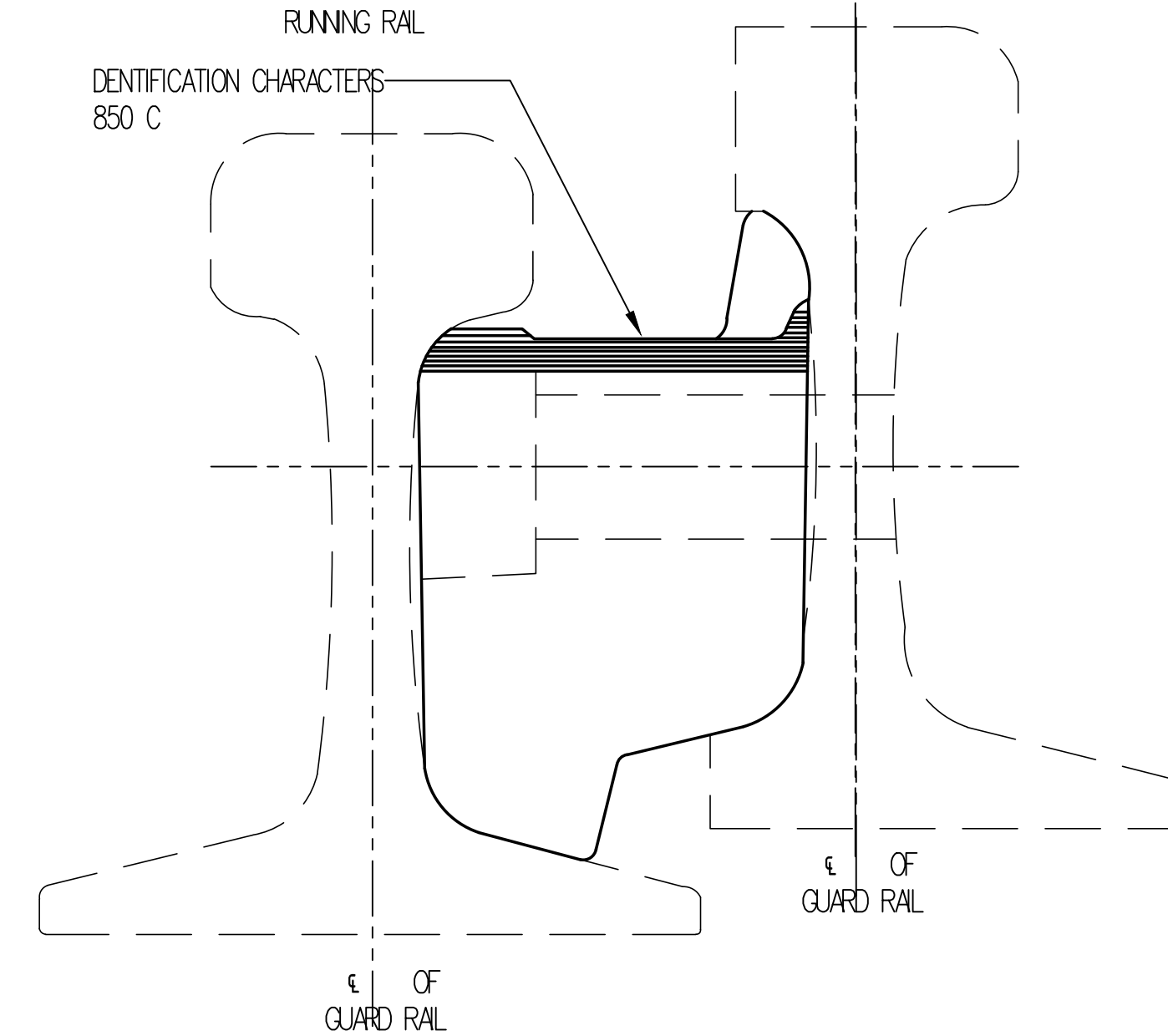
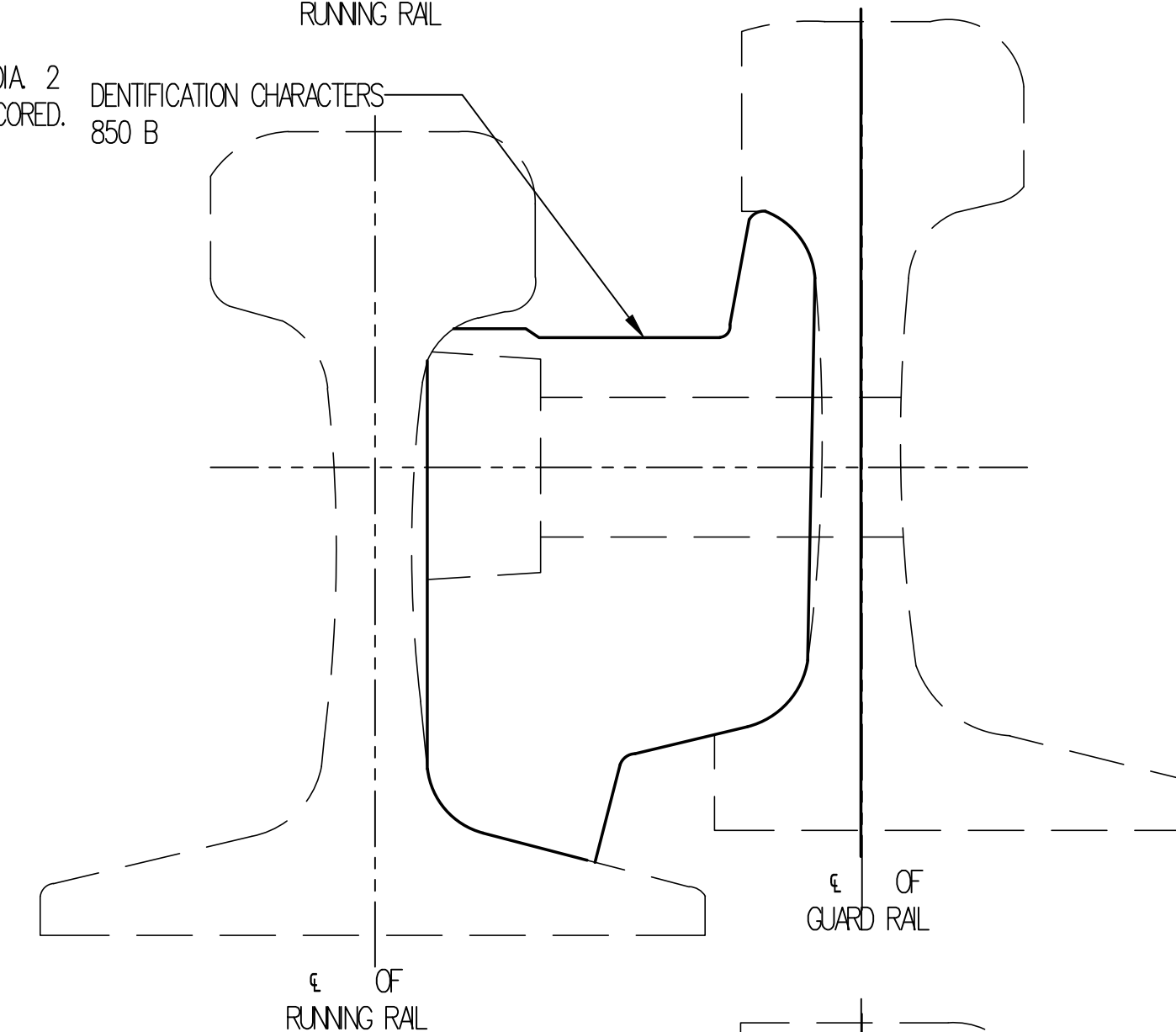
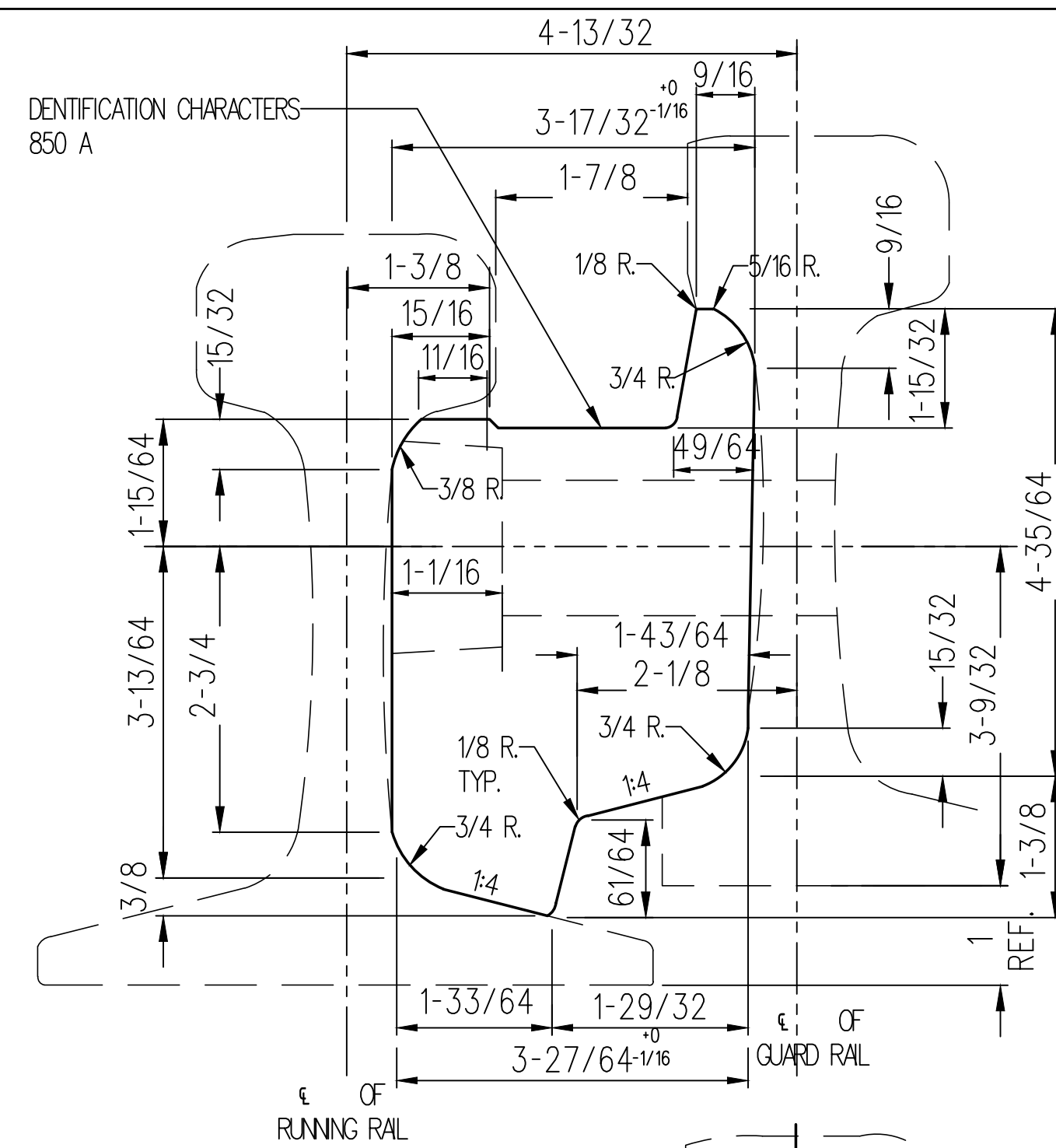
850 A-CENTER BLOCK



850 A-LEFT HAND END BLOCK



850 A-RIGHT HAND END BLOCK



## NOTES

- WHEN REFERRING TO FILLER BLOCK PLAN AND BLOCK NUMBER (850 A,B OR C) MUST BE STATED TO INDICATE SPECIFIC BLOCK REQUIRED.
- DIMENSIONS ARE FOR FINISHED BLOCKS, PROPER ALLOWANCE MUST BE MADE FOR SHRINKAGE WHEN MAKING PATTERNS.
- IDENTIFICATION CHARACTERS (1/2" MINIMUM HEIGHT) RAISED 1/32" ON EACH BLOCK AS SHOWN.
- ALL DIMENSIONS ARE IN INCHES.
- UNLESS OTHERWISE SPECIFIED ALL TOLERANCE TO BE  $\pm 1/32$  (NON CUMULATIVE).
- ALL BEARING SURFACES SHALL BE MACHINE FINISHED TO GIVE AN ACCURATE FIT AGAINST THE RAIL.
- ALL SHARP EDGES TO BE ROUNDED OF TO 1/8 R.

## MATERIAL

CAST IRON A.S.T.M. SPECIFICATION-A48 GRADE 30.

OR

DUCTILE IRON A.S.T.M. SPECIFICATION-A536 GRADE 80-55-06.

METRIC CONVERSION: 1 inch=25.4mm, 1 foot=304.8mm

No.	Date	Revision	By	Approved
1	18/07/27	ADDED IMPERIAL TO METRIC CONVERSION NOTE		

Standard / **GUARD RAIL FILLER BLOCKS**  
FOR 136LB. R.E. RAIL

Drawn MG Checked GGS Approved *[Signature]*  
VP Engineering & Asset Management



**METROLINX**

Date DEC 15, 2017 Plan Number GTS-0850 Rev 1

REFERENCE: TS-850 A/C Sheet 1 OF 1