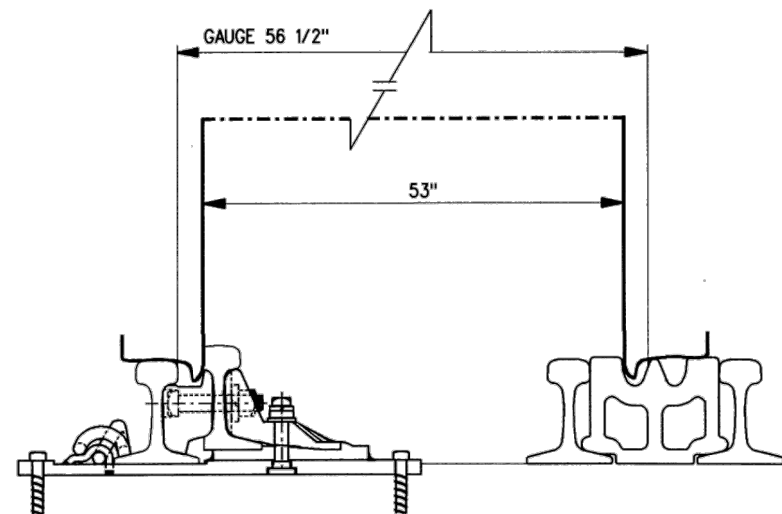
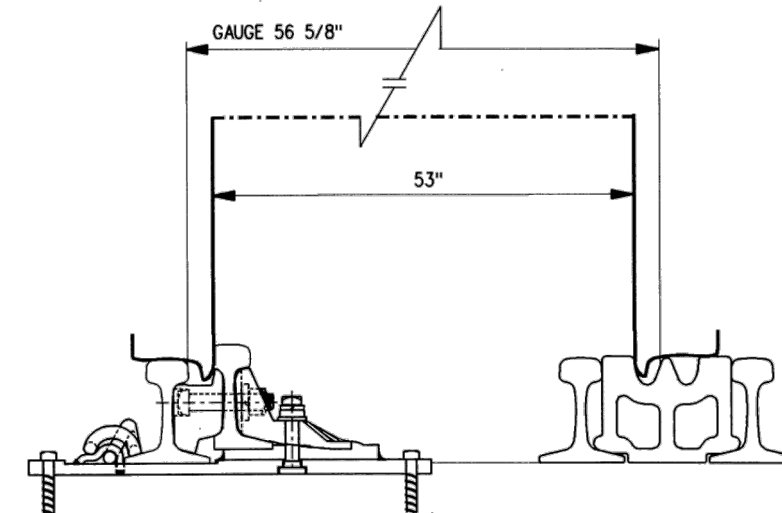


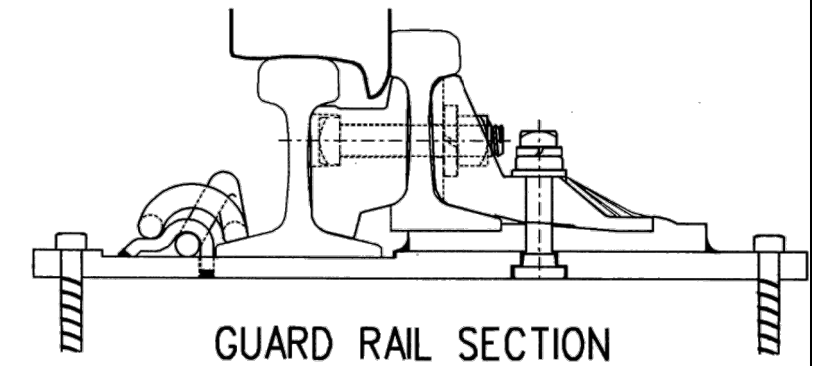
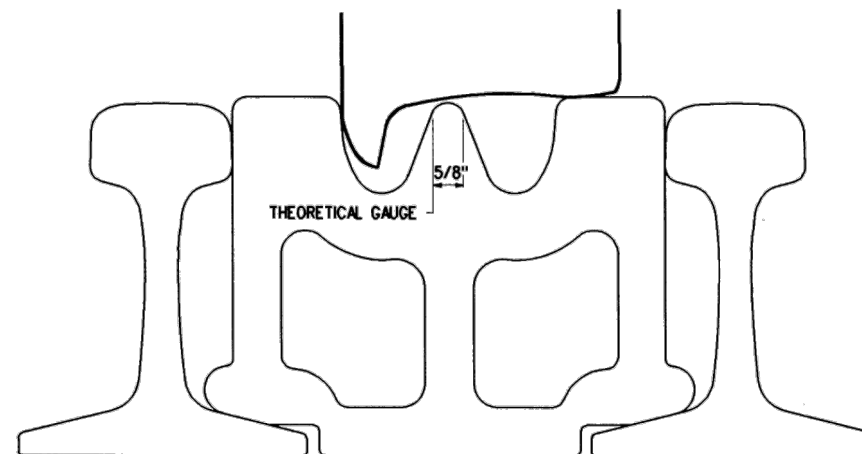
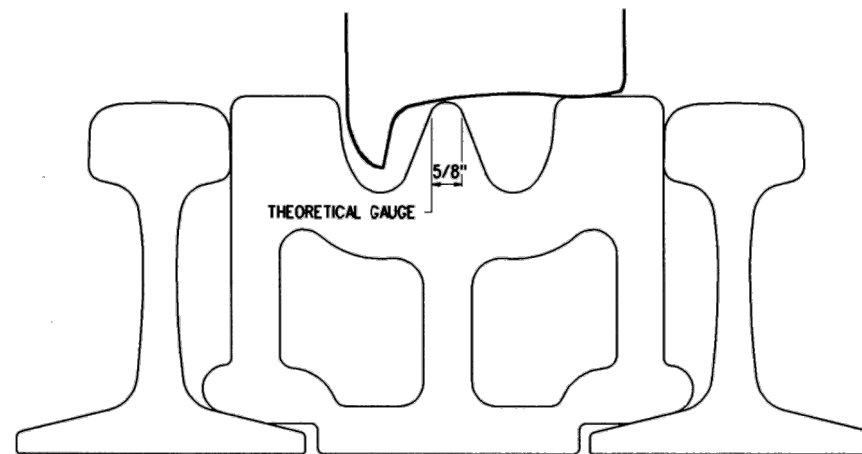
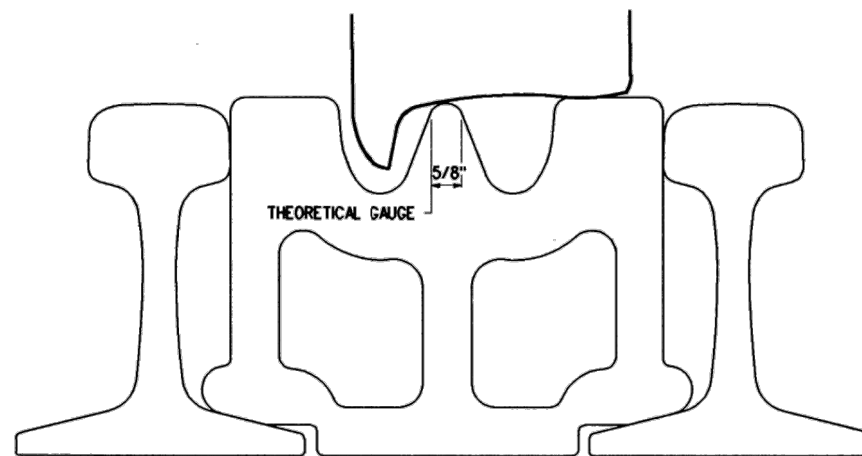
MINIMUM BACK TO BACK DISTANCE OF WHEEL SETS-GAUGE 1/8" NARROW



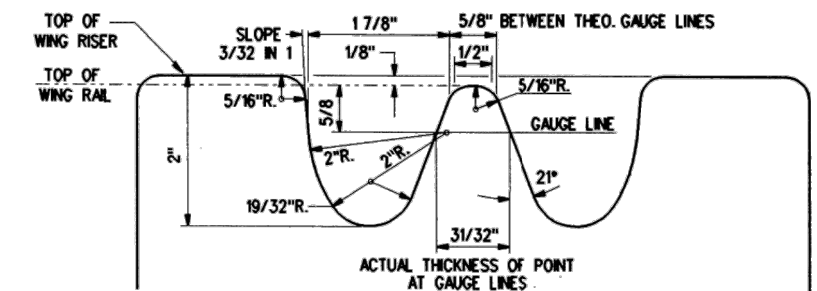
MINIMUM BACK TO BACK DISTANCE OF WHEEL SETS-GAUGE EXACT



MINIMUM BACK TO BACK DISTANCE OF WHEEL SETS-GAUGE 1/8" WIDE



GUARD RAIL SECTION



TYPICAL SECTION OF HEAVY POINT R.B.M. FROG AT 5/8" POINT OF FROG

METRIC CONVERSION: 1 inch=25.4mm, 1 foot=304.8mm

No.	Date	Revision	By	Approved
1	18/07/27	ADDED IMPERIAL TO METRIC CONVERSION NOTE		

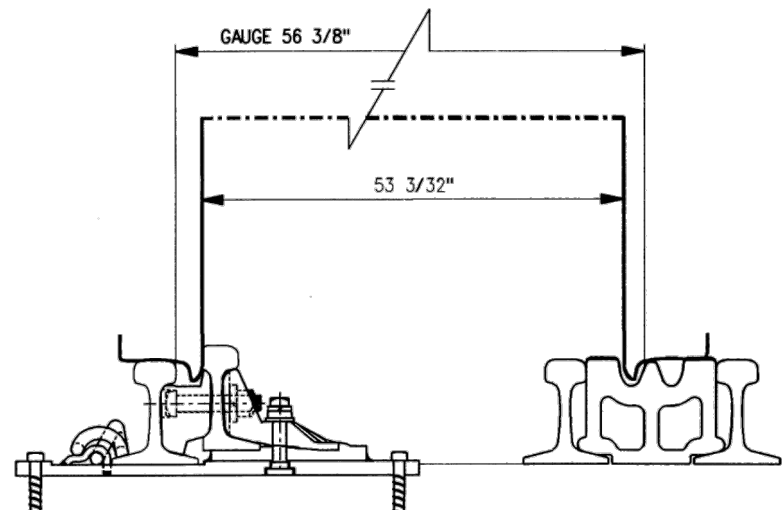
Standard / INTERACTION
 36" DIA. HEUMANN WORN WHEEL / FROG
 FOR 136 LB. R.E. RAILS

Drawn MG Checked GGS Approved *[Signature]*
 VP Engineering & Asset Management

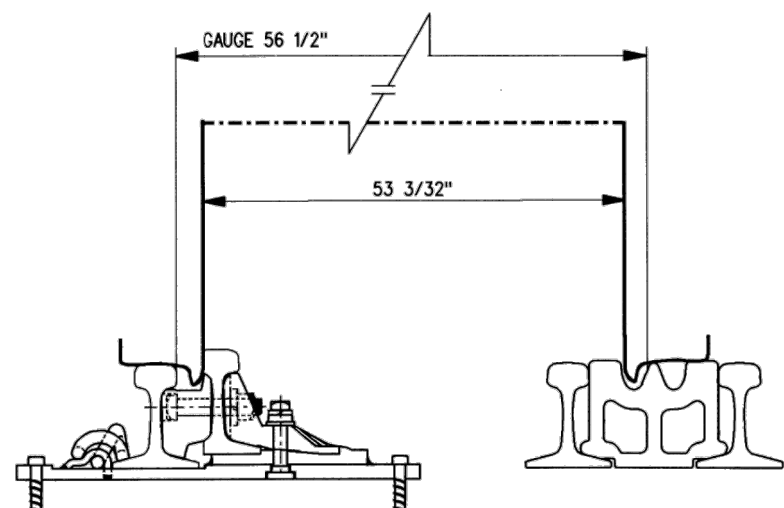


Date DEC 15, 2017 Plan Number GTS-0853 Rev 1

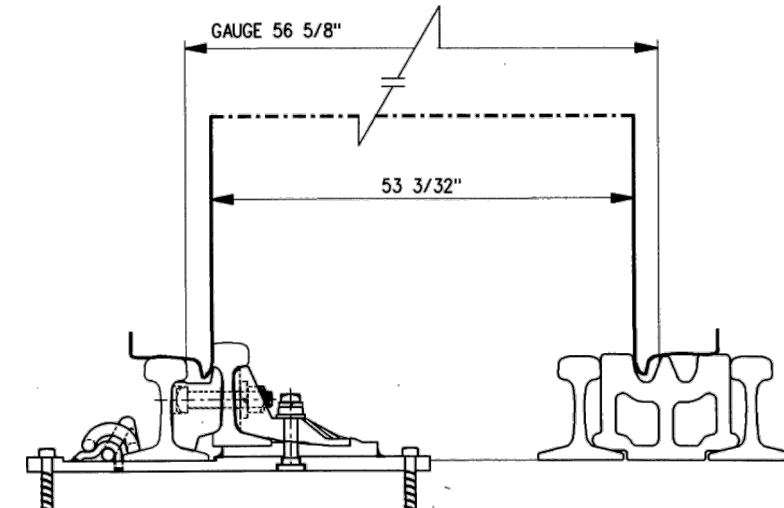
REFERENCE: TS-853 Sheet 1 OF 2



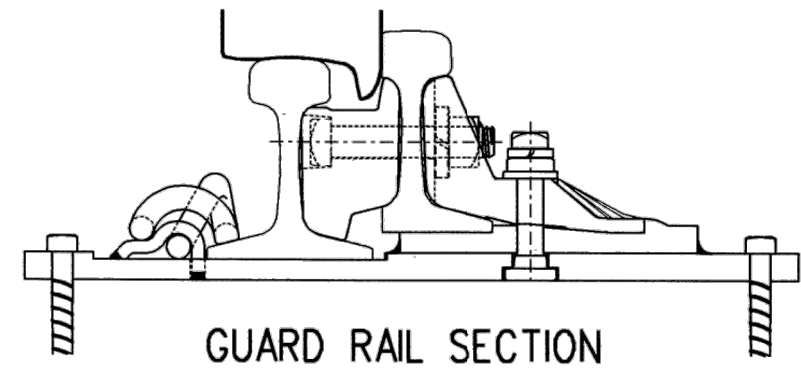
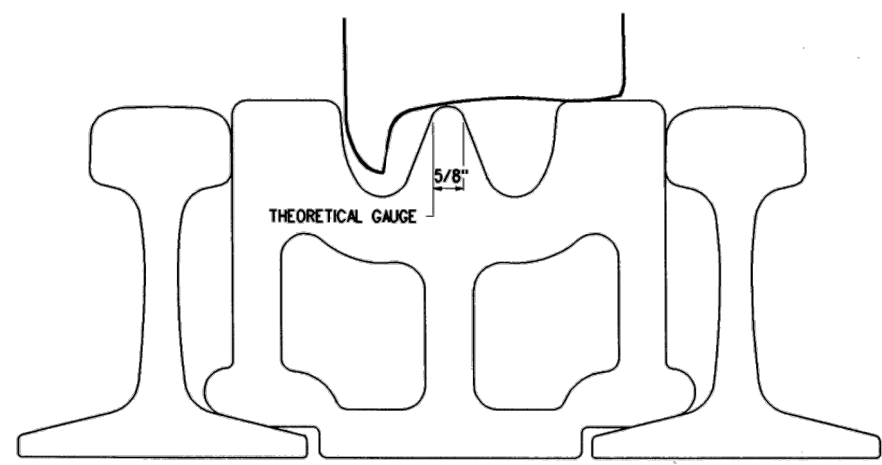
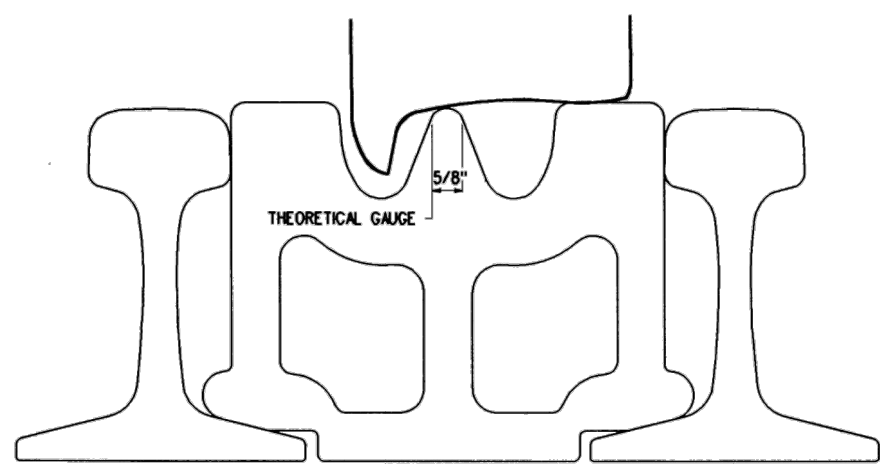
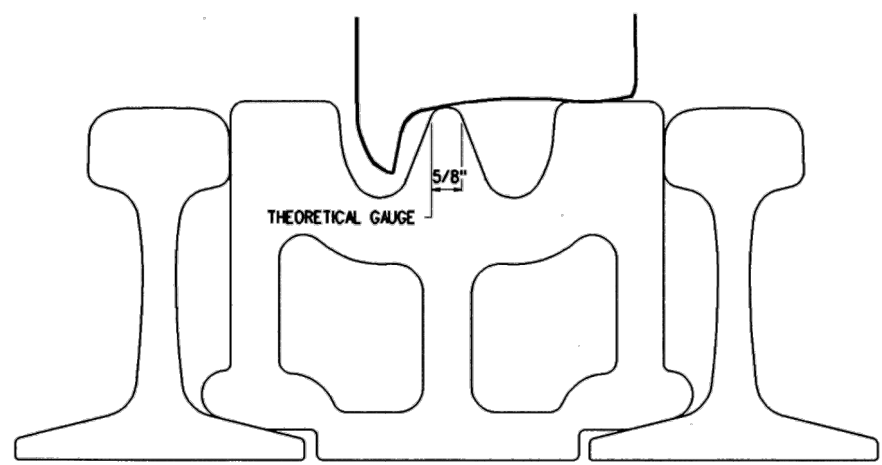
MAXIMUM BACK TO BACK DISTANCE OF WHEEL SETS-GAUGE 1/8" NARROW



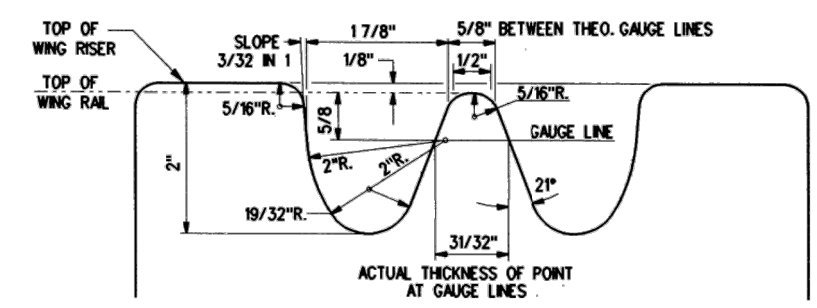
MAXIMUM BACK TO BACK DISTANCE OF WHEEL SETS-GAUGE EXACT



MAXIMUM BACK TO BACK DISTANCE OF WHEEL SETS-GAUGE 1/8" WIDE



GUARD RAIL SECTION



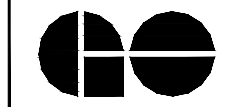
TYPICAL SECTION OF HEAVY POINT R.B.M. FROG AT 5/8" POINT OF FROG

METRIC CONVERSION: 1 inch=25.4mm, 1 foot=304.8mm

No.	Date	Revision	By Approved
1	18/07/27	ADDED IMPERIAL TO METRIC CONVERSION NOTE	

Standard / INTERACTION
 36" DIA. HEUMANN WORN WHEEL / FROG
 FOR 136 LB. R.E. RAILS

Drawn MG Checked GGS Approved *[Signature]*
 VP Engineering & Asset Management



Date DEC 15, 2017 Plan Number GTS-0853 Rev 1

REFERENCE: TS-853 Sheet 2 OF 2