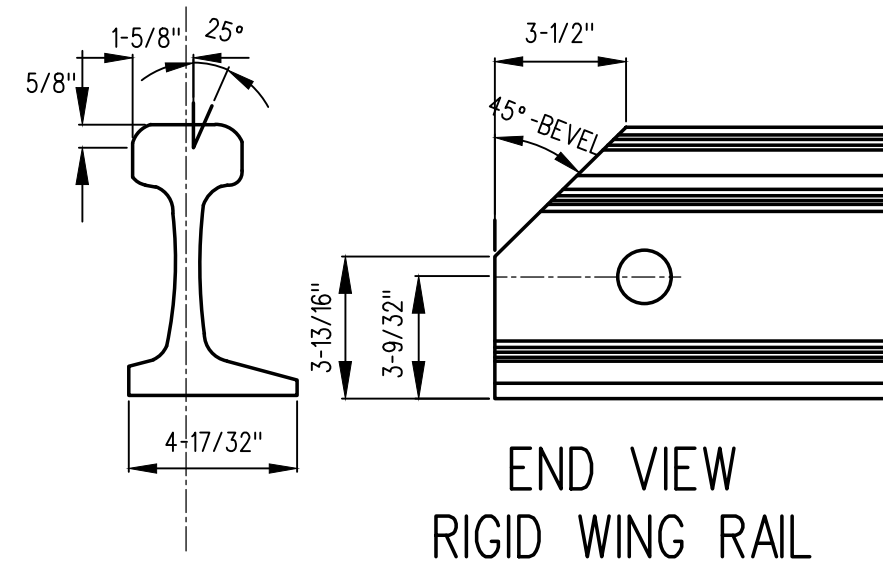
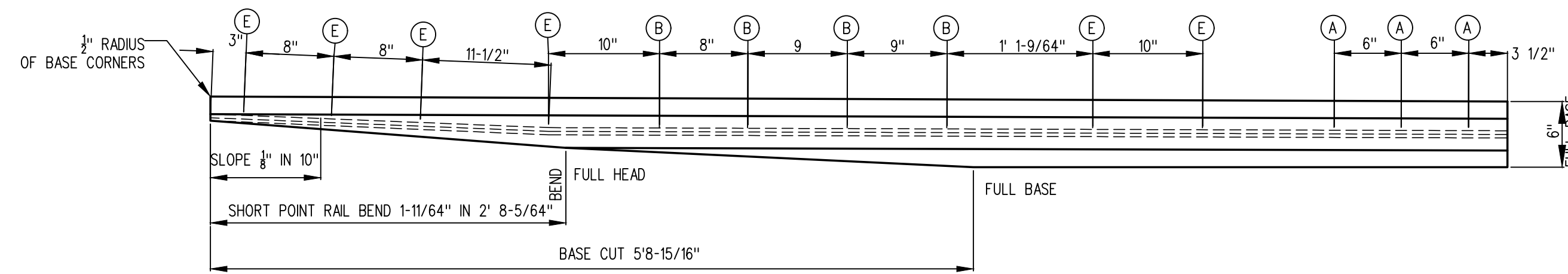
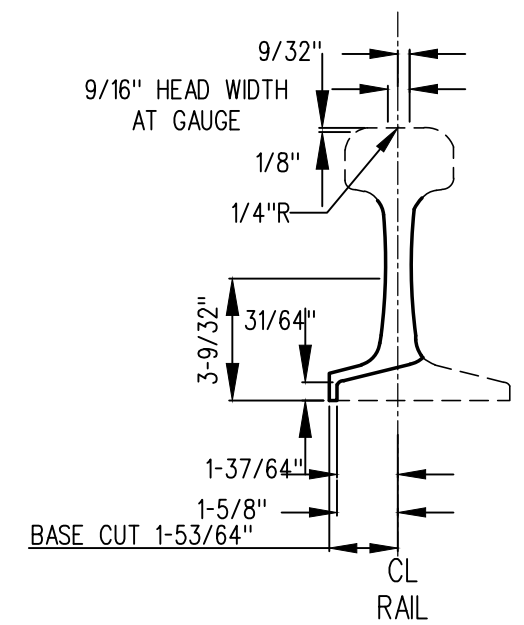


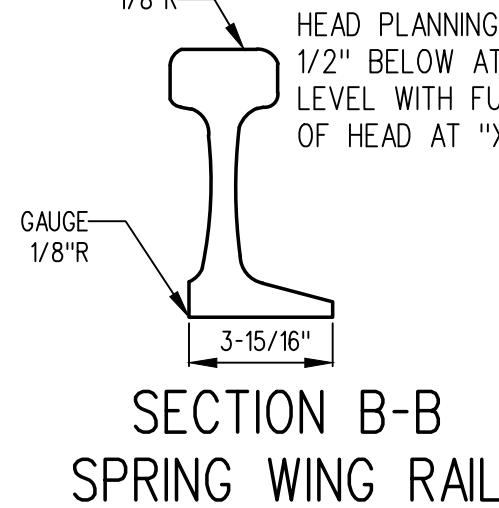
SHORT POINT RAIL (9'-9" LONG)
FOR RIGHT HAND FROG



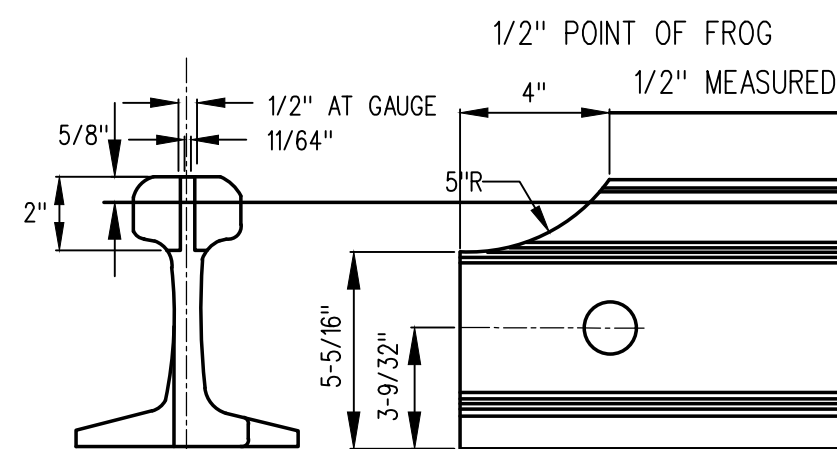
END VIEW
RIGID WING RAIL



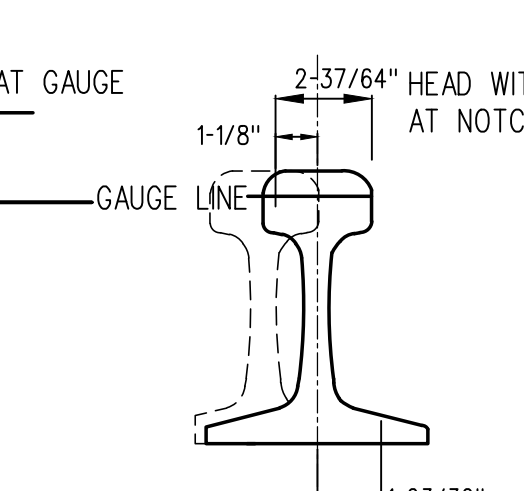
END VIEW
SHORT POINT RAIL



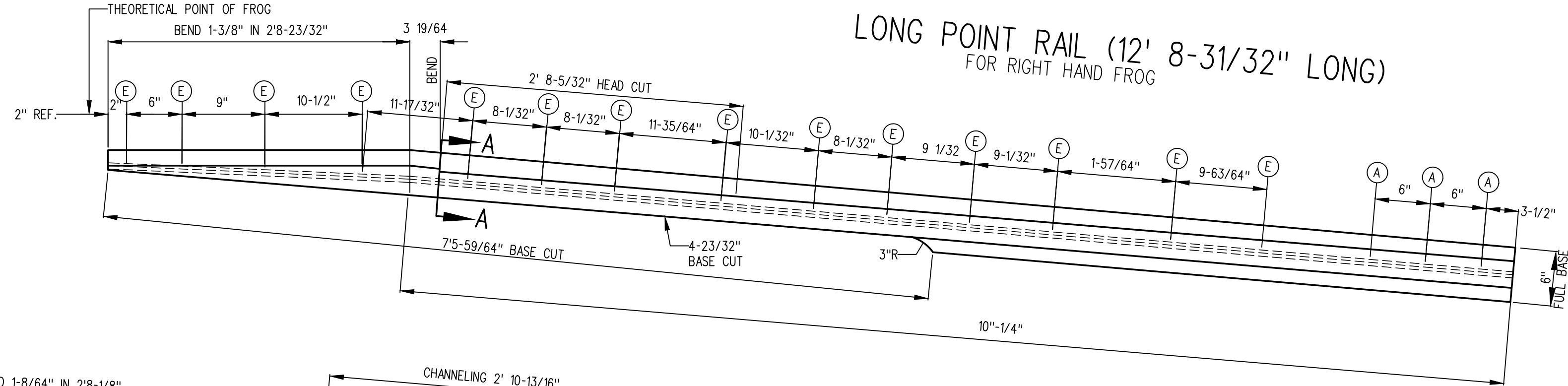
SECTION B-B
SPRING WING RAIL



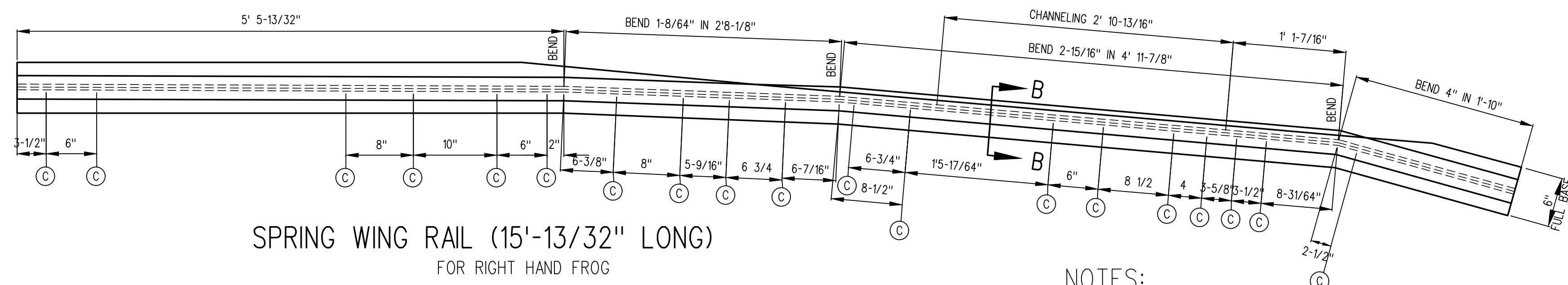
END VIEW
LONG POINT RAIL



SECTION A-A
LONG POINT AT NOTCH



LONG POINT RAIL (12' 8-31/32" LONG)
FOR RIGHT HAND FROG



SPRING WING RAIL (15'-13/32" LONG)
FOR RIGHT HAND FROG

NOTES:

- 1- ALL DIMENSIONS ARE IN INCHES UNLESS OTHERWISE SPECIFIED.
- 2- THIS IS A MACHINING DRAWING - FOR ASSEMBLY OF SPRING WING RAIL. SEE GTS-862.
- 3- ALL HOLES MUST BE DRILLED BEFORE RAILS ARE BENT.
- 4- ALL HOLES TO BE DRILLED: THE USE OF ACETYLENE TORCH OR OTHER BURNING METHOD FOR THE MAKING OF HOLES OR CUTTING IN THE MANUFACTURE OF RAILS IS ABSOLUTELY PROHIBITED.
- 5- THE MACHINING DETAILS ON THIS DRAWING ARE FOR RIGHT HAND SPRING FROG RAILS ONLY.

MATERIAL:

RAIL - UNLESS OTHERWISE SPECIFIED RAILS SHALL BE NO.1 ALGOMA CHROME RAILS IN ACCORDANCE WITH SPECIFICATION 12.3 - WITH PENDING REVISIONS.
ENDS OF RAILS AT RAIL JOINTS TO BE END HARDENED TO SPEC.

HOLE	DIA.	HEIGHT ABOVE BASE
A	1-15/16"	3-3/32"
B	1-7/16"	3-9/32"
C	1-1/16"	3-9/32"
D	1-3/4"	3-3/32"
E	1-1/2"	3-9/32"

DESCRIPTION	STANDARD
	DWG. NO.
RIGID WING RAIL (RIGHT HAND)	GTS-866/A
RIGID WING RAIL (LEFT HAND)	GTS-866/B
SHORT POINT RAIL (RIGHT HAND)	GTS-866/A
SHORT POINT RAIL (LEFT HAND)	GTS-866/B
LONG POINT RAIL (RIGHT HAND)	GTS-866/A
LONG POINT RAIL (LEFT HAND)	GTS-866/B
SPRING WING RAIL (RIGHT HAND)	GTS-866/A
SPRING WING RAIL (LEFT HAND)	GTS-866/B

METRIC CONVERSION: 1 inch=25.4mm, 1 foot=304.8mm

1	18/07/27	ADDED IMPERIAL TO METRIC CONVERSION NOTE	
No.	Date	Revision	By Approved

Standard / MACHINING FROG RAIL DETAILS
NO.12 SPRING FROG
136LB. R.E. RAIL

Drawn MG Checked GGS Approved VP Engineering & Asset Management



Date DEC 15, 2017 Plan Number GTS-0866 Rev 1

REFERENCE: TS-866 Sheet 1 OF 1