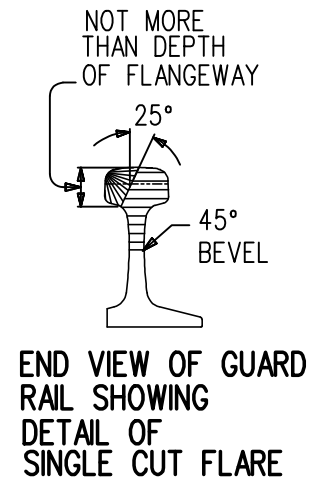
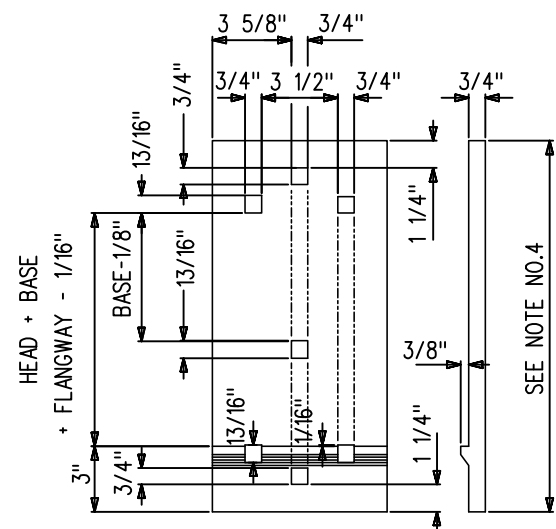


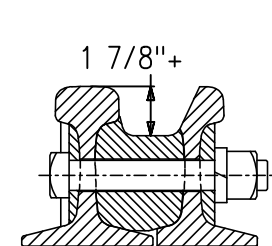
13'-0" GUARD RAIL



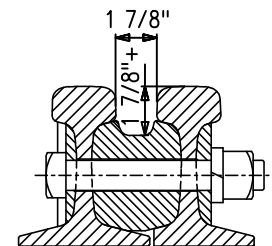
END VIEW OF GUARD RAIL SHOWING DETAIL OF SINGLE CUT FLARE



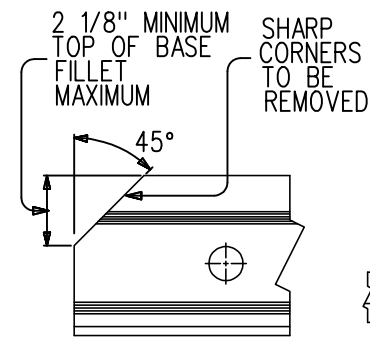
GUARD RAIL TIE PLATE



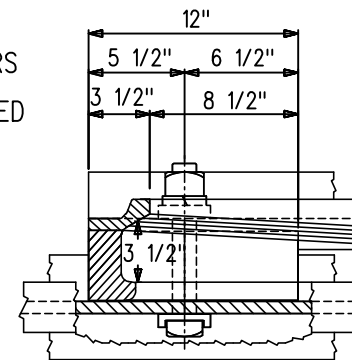
SECTION THROUGH END BLOCK



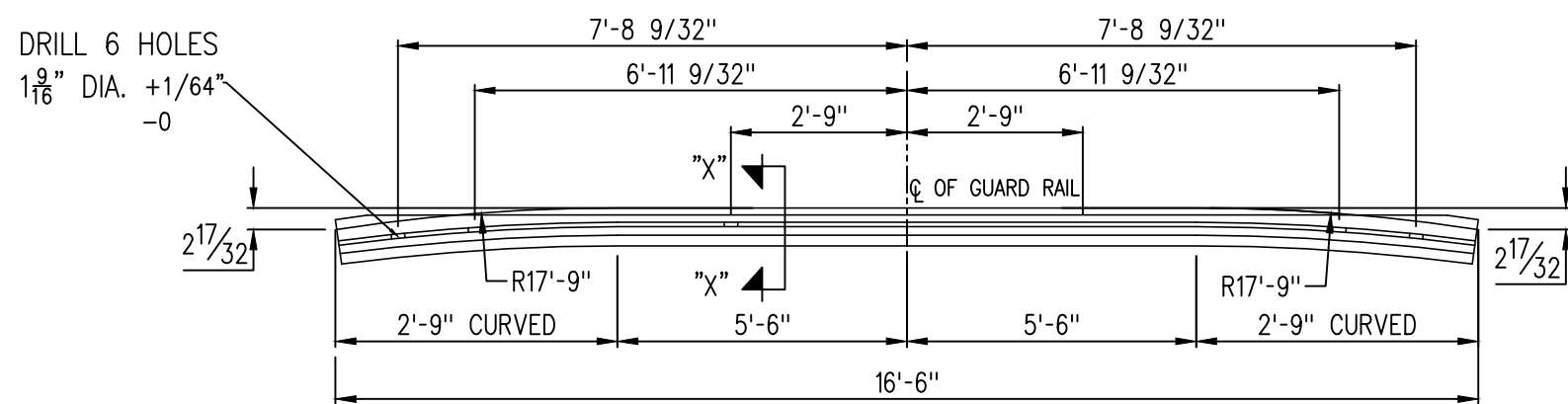
SECTION THROUGH SEPARATOR BLOCK



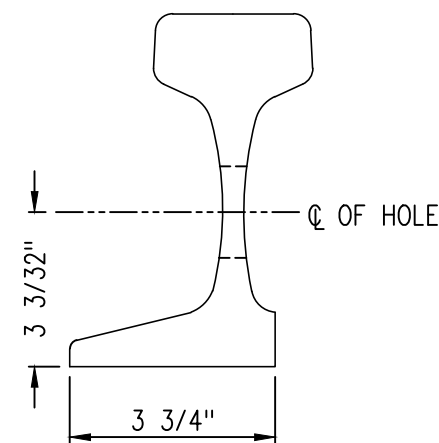
BEVELED END OF RAIL



END BLOCK



16'-6" GUARD RAILS- 132LB.; 136LB. R.E. RAIL



SECTION "X"-"X"

NOTES

- GUARD RAILS SHALL BE FURNISHED TO LENGTH CALLED FOR AND, UNLESS OTHERWISE SPECIFIED WITH ACCESSORIES AS ILLUSTRATED IN PLAN VIEWS AND PER NOTES BELOW AS FOLLOWS:
 - SEPARATOR BLOCKS AND BOLTS PER NOTE NO.2
 - END BLOCKS AND BOLTS PER NOTE NO.3.
 - TIE PLATES PER NOTE NO.4.
- SEPARATOR BLOCKS MAY BE OF STEEL, CAST IRON OR MALLEABLE IRON OF SUITABLE DESIGN.
- END BLOCKS MAY BE OF CAST IRON AS SHOWN, STEEL OR MALLEABLE IRON, OF SUITABLE DESIGN.
- PLATES - SHALL BE 7" X 3/4" X 16" FOR RAILS LESS THAN 100 LB. PER YD. AND 8" X 3/4" X 17" FOR RAILS 100 LB. PER YD. AND HEAVIER, EXCEPT WHEN COMBINED WIDTH OF HEAD AND BASE EXCEEDS 8-5/8", PLATES SHALL BE 18" LONG.
- RAIL BRACES - APPROVED TYPE OF GUARD RAIL BRACES TO BE FURNISHED WHEN REQUIRED; PURCHASER SHALL SPECIFY DETAILS AND STATE ON WHICH PLATES THEY ARE TO BE USED.
- FOR SETTING OF GUARD RAILS, WIDTH OF FLANGEWAY, GUARD CHECK GAGE AND GUARD FACE GAGE, SEE GTS-1124 AND GTTS-17.5, LATEST EDITION.
- BOLTED GUARD RAILS APPROVED BY THE PURCHASER MAY BE USED IN PLACE OF THE BOLTED GUARD RAIL DESIGN.
- SPECIFICATIONS - SEE GTTS-13.4.18, LATEST EDITION. SPIKE HOLE DETAILS NOT OTHERWISE SHOWN TO BE PER GTTS-10.4, LATEST EDITION.
- MATERIAL: ONLY NEW RAIL OR ONE SPOT PART WORN RAIL AS CLASSIFIED IN GTTS REVISION 01 SECTION 4 RAIL AND RM 1303-0-CLASSIFICATION OF RAIL ARE TO BE USED. RAILS REJECTED AT THE BUT WELDING PLANTS DUE TO MAGNAFLIX INDICATIONS MAY BE USED, PROVIDED THEY DO NOT CONTAIN PIPE, AND THAT ANY NON-METALLIC INCLUSIONS ARE NOT MORE THAN 3/8" LONG.
- THE USE OF ACETYLENE TORCH OR OTHER BURNING METHOD FOR CUTTING OR MAKING OF HOLES IN THE RAIL IS ABSOLUTELY PROHIBITED.
- ALL HOLES MUST BE DRILLED BEFORE RAIL CURVES ARE APPLIED.
- SIDE OF RAIL BASE MUST BE PLANED AFTER GUARD RAIL IS PROPERLY CURVED.

METRIC CONVERSION: 1 inch=25.4mm, 1 foot=304.8mm

3	19/04/11	ADDED 13'-0" GUARD RAIL
2	19/04/08	DELETED 11'-0" GUARD RAILS-100LB. AND 115LB.
1	18/07/27	ADDED IMPERIAL TO METRIC CONVERSION NOTE
No.	Date	Revision

By Approved

Standard / **GUARD RAILS**
100, 115, 132 AND 136LB. RAILS

Drawn MG Checked GGS Approved VP Engineering & Asset Management



Date DEC 15, 2017 Plan Number GTS-1106 Rev 1

REFERENCE: TS-1106 & AREMA- PLAN NO 504-03 Sheet 1 OF 1