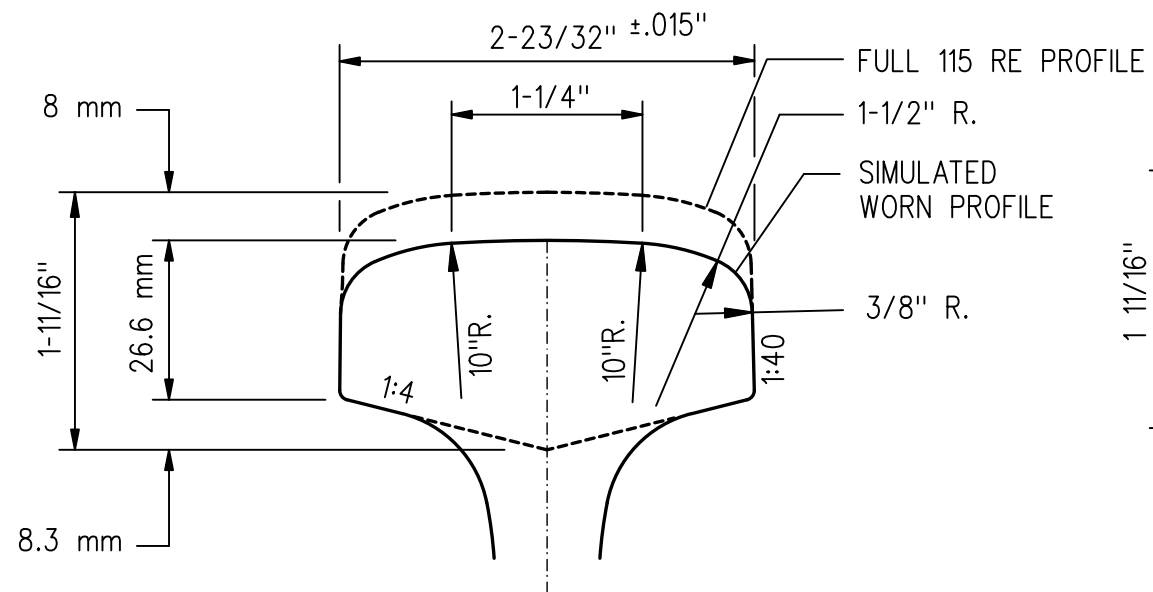


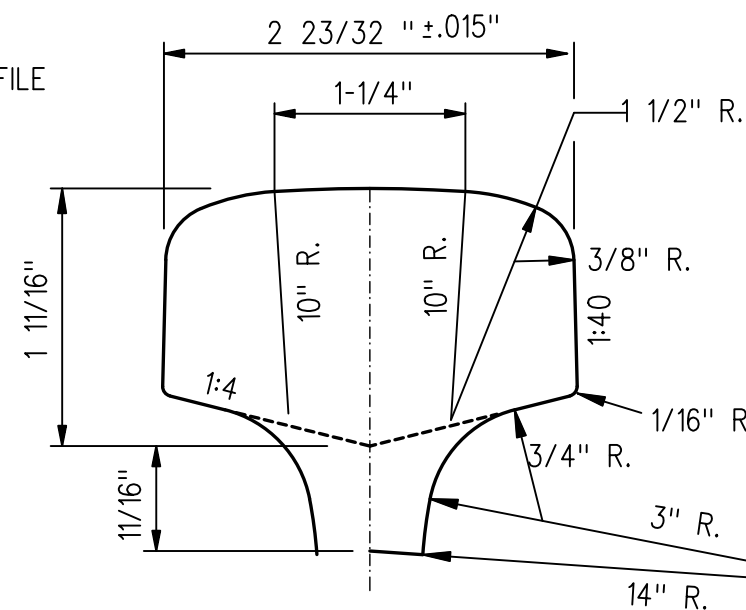
A	B LENGTH OF TAPER
19'-6"	19'-6"
20'-0"	19'-6"

NOTES :

- RAIL TO BE 300 BRINELL HARDNESS (3 HB) TO GO TRACK STANDARD RC-0506-02TRK, LATEST REVISION.
- THE TRANSITION RAIL PROFILE SHALL BE IDENTIFIED BY WHITE CHARACTERS, 2" TO 3" HIGH, STENCILLED ON BOTH SIDES OF THE RAIL. THE END WITH FULL PROFILE IS TO BE STENCILLED "115 NEW" AND THE END WITH MODIFIED PROFILE IS TO BE STENCILLED "115-8 MM".
- TOOL TO FOLLOW 1:40 SLOPE Laterally AS HEIGHT OF RAIL DECREASES.
- RAIL HEAD AT NOMINAL 8 mm CUT END MUST BE WITHIN TOLERANCE MEASURED WITH GO RAIL WEAR GAUGE (GTS-1806).
- * RUNOUT OF TOP PROFILE WILL VARY DUE TO EFFECT OF RAIL ROLLING TOLERANCES ON DEPTH OF RAIL HEAD.
- WHEN ORDERING TRANSITION RAIL, STOCK NUMBER, RAIL WEIGHT AND LENGTH MUST BE SPECIFIED.



VIEW A-A
HEAD CUT TO SIMULATE A 115 RE WORN RAIL



VIEW B-B
FULL 115 RE RAIL HEAD PROFILE

METRIC CONVERSION: 1 inch=25.4mm, 1 foot=304.8mm

1	18/07/27	ADDED IMPERIAL TO METRIC CONVERSION NOTE	
No.	Date	Revision	By Approved
Standard		TRANSITION RAIL NEW 115 RE TO 8 mm WORN 115 RE	
Drawn	Checked	Approved	VP Engineering & Asset Management
GS	GJM		
Date	SEPT 15/2017	Plan Number	GTS-1110 Rev 1
REFERENCE: TS-1110_SH1_R0		Sheet 1 OF 3	