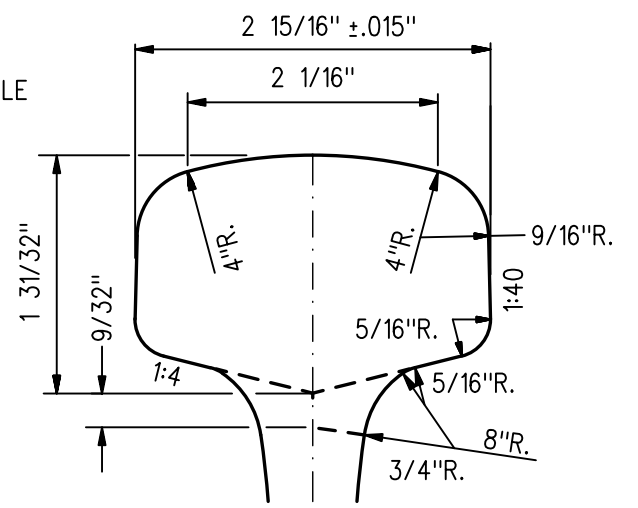


VIEW A-A

HEAD CUT TO SIMULATE A 136 GO WORN RAIL



VIEW B-B

FULL 136 GO RAIL HEAD PROFILE

NOTES :

1. RAIL TO BE 300 BRINELL HARDNESS (3 HB) TO GO TRACK STANDARDS RC-0506-02TRK, LATEST REVISION.
2. THE TRANSITION RAIL PROFILE SHALL BE IDENTIFIED BY WHITE CHARACTERS, 2" TO 3" HIGH, STENCILLED ON BOTH SIDES OF THE RAIL. THE END WITH FULL PROFILE IS TO BE STENCILLED "136 GO NEW" AND THE END WITH MODIFIED PROFILE IS TO BE STENCILLED "136 GO-14 MM".
3. TOOL TO FOLLOW 1:40 SLOPE LATERALLY AS HEIGHT OF RAIL DECREASES.
4. RAIL HEAD AT NOMINAL 14 mm CUT END MUST BE WITHIN TOLERANCE.
5. RUNOUT OF TOP PROFILE WILL VARY DUE TO EFFECT OF RAIL ROLLING TOLERANCES ON DEPTH OF RAIL HEAD.

METRIC CONVERSION: 1 inch=25.4mm, 1 foot=304.8mm

| | | | |
|-----|----------|--|-------------|
| No. | Date | Revision | By Approved |
| 1 | 18/07/27 | ADDED IMPERIAL TO METRIC CONVERSION NOTE | |

Standard / **TRANSITION RAIL**
NEW 136 GO TO 14mm WORN 136 GO

Drawn MF Checked NWP Approved *[Signature]*
 VP Engineering & Asset Management



Date SEPT 15/2017 Plan Number GTS-1110 Rev 1