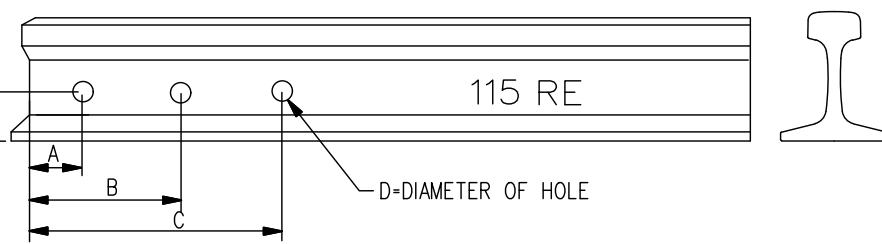
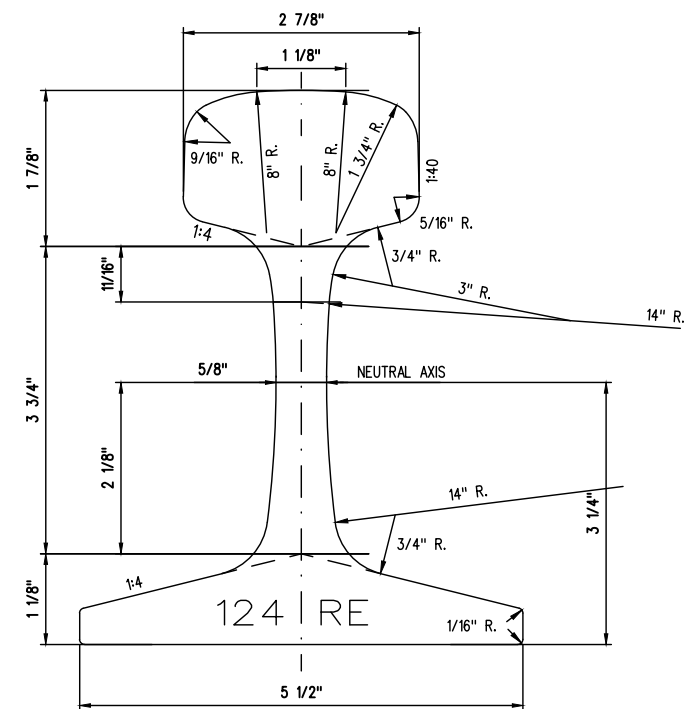
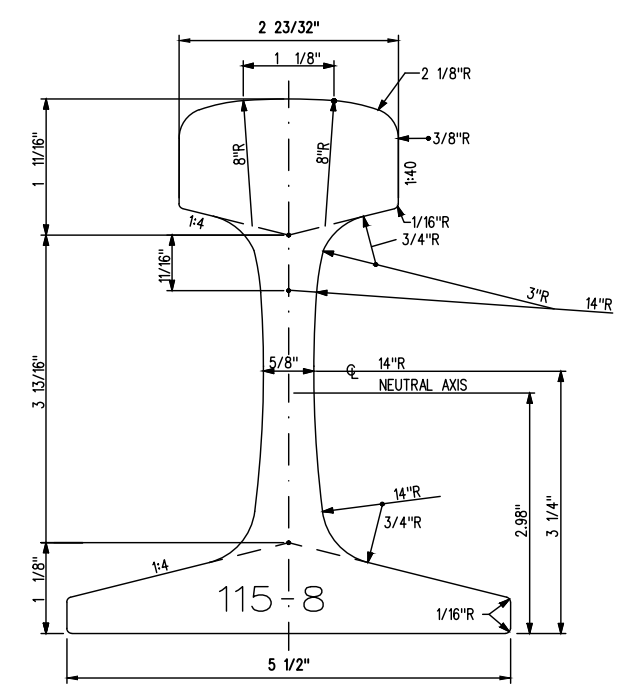


NOTE: SECTION REPLACED BY 115RE FOR NEW INSTALLATION

		100 ARA-A	112 RE	115 RE	115-8	124 RE
MOMENT OF INERTIA	IN. ⁴	49.07	65.50	65.84	65.60	75.80
SECTION MODULUS HEAD	IN. ³	15.05	18.10	18.14	18.00	20.87
SECTION MODULUS BASE	IN. ³	17.92	21.80	22.00	22.00	23.38
CALCULATED WEIGHT	LB./YD.	101.01	112.30	114.70	114.70	123.42
AREA: HEAD	IN. ²	3.68	3.95	4.03	3.91	4.77
AREA: WEB	IN. ²	2.27	2.77	2.80	3.05	3.04
AREA: BASE	IN. ²	3.95	4.29	4.42	4.29	4.29
AREA: TOTAL	IN. ²	9.90	11.01	11.25	11.25	12.10
NEUTRAL AXIS ABOVE BASE	IN.	2.74	3.00	3.00	3.00	3.24
LATERAL MOMENT OF INERTIA	IN. ⁴	9.64	-	11.00	10.73	11.49
LATERAL SECTION MODULUS HEAD	IN. ³	7.00	-	7.73	-	7.82
LATERAL SECTION MODULUS BASE	IN. ³	3.50	-	4.00	-	4.18
HEIGHT OF SHEAR CENTRE ABOVE BASE IN.		1.34	-	1.55	-	1.77
TORSIONAL RIGIDITY IS "KG" WHERE G IS THE MODULUS OF RIGIDITY. (ERROR FOR K GREATER THAN 10 %)	K=	3.59	-	4.69	-	5.50



DRILLING DATA FOR RAILS						
WEIGHT AND SECTION	A	B	C	D	E	SPACING
100 ARA-A	$\pm 1/32"$	$\pm 1/32"$	$\pm 1/32"$	$\pm 1/16"$ 0	$\pm 1/32"$	2-11/16" : 5-1/2" : 5-1/2"
115-8 & 115 RE	3-1/2"	9-1/2"	15-1/2"	1-3/16"	2-7/8"	3-1/2" : 6" : 6"
132 RE, 136-8, 136-10 & 136 CN	3-1/2"	9-1/2"	15-1/2"	1-5/16"	3-3/32"	3-1/2" : 6" : 6"



NOTE: SECTION REPLACED BY 115RE FOR NEW INSTALLATION

METRIC CONVERSION: 1 inch=25.4mm, 1 foot=304.8mm

1	18/07/27	ADDED IMPERIAL TO METRIC CONVERSION NOTE
No.	Date	Revision
		By Approved
Standard		RAIL SECTIONS FOR RAILS WITH 5-1/2 INCH RAIL BASE 100 ARA-A & 115 RE
Drawn	Checked	Approved
CM	GS	<i>WJL</i> VP Engineering & Asset Management
Date		Plan Number
SEPT 15/2017		GTS-1111
		Rev 1
REFERENCE: TS-1111_SH2_R9		Sheet 2 OF 3

