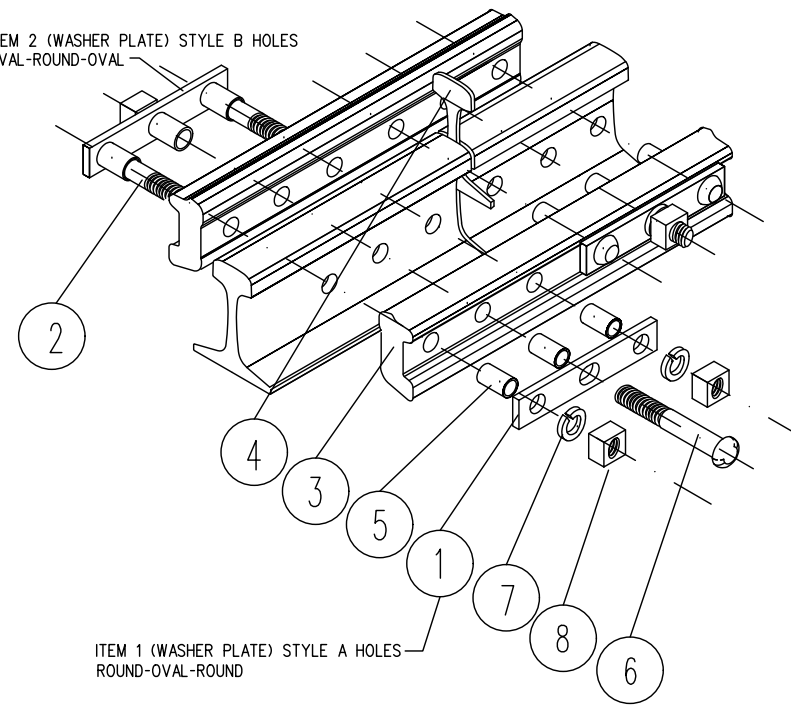


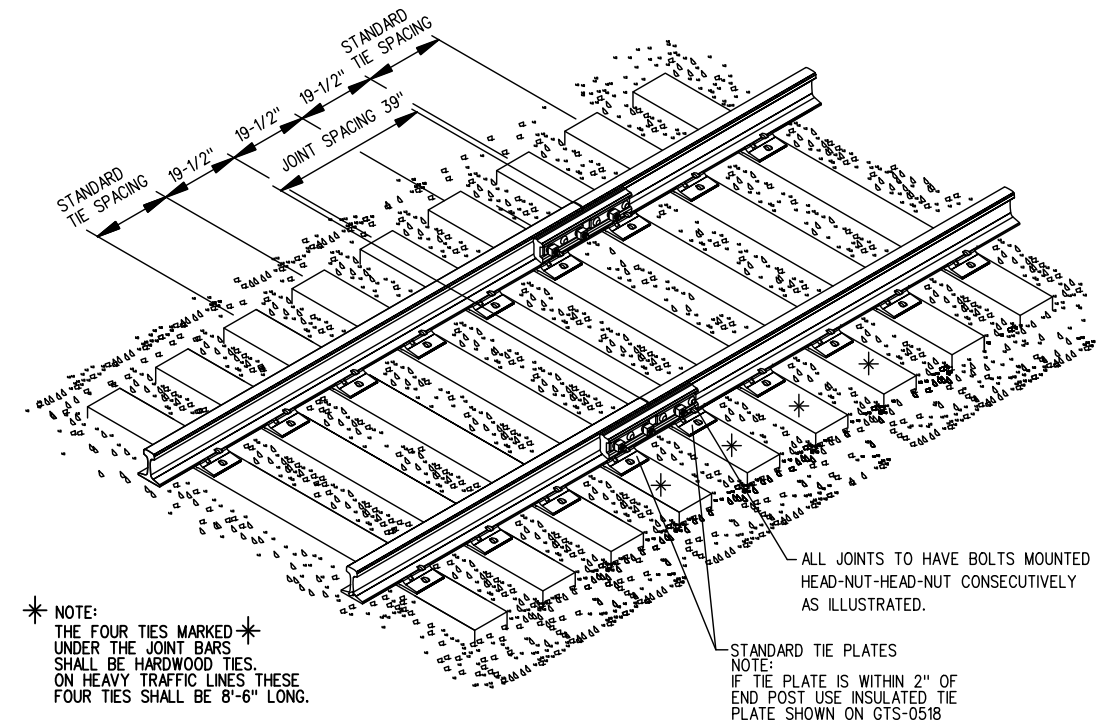
ITEM 2 (WASHER PLATE) STYLE B HOLES
OVAL-ROUND-OVAL



ITEM 1 (WASHER PLATE) STYLE A HOLES
ROUND-OVAL-ROUND

PORTEC (POLY) RAIL JOINT ASSEMBLY

85 LB STD. RAIL			
NEW COMPLETE JOINT KIT (ITEMS 1-8) LISTED BELOW.			
ITEM NO.	DESCRIPTION	PLAN NUMBER	QTY
1	STEEL WASHER PLATE		4
2	-----		--
3	JOINT BAR - POLYURETHANE COATED		2
4	END POST - CANVAS		1
5	BUSHING - STEEL CORE, FILAMENT WD.		8
6	3/8" DIA. O.N. TRACK BOLT X 6 3/4" LG.	GTS-1301	4
7	SPRING WASHER FOR 3/8" DIA. BOLT		4
8	SQ. NUT 3/8"		4
100 LB ARA-A RAIL			
NEW COMPLETE JOINT KIT (ITEMS 1-8) LISTED BELOW.			
ITEM NO.	DESCRIPTION	PLAN NUMBER	QTY
1	WASHER PLATE-STEEL (STYLE A)		2
2	WASHER PLATE-STEEL (STYLE B)		2
3	JOINT BAR-POLYURETHANE COATED		2
4	END POST- CANVAS		1
5	BUSHING-STEEL CORE, FILAMENT WD.		12
6	3/8" DIA. O.N. TRACK BOLT X 6 1/2" LG.	GTS-1317/6	6
7	SPRING WASHER FOR 3/8" DIA. BOLT	GTS-1301	6
8	SQ. NUT 3/8"		6
115 LB R.E. RAIL			
NEW COMPLETE JOINT KIT (ITEMS 1-8) LISTED BELOW.			
ITEM NO.	DESCRIPTION	PLAN NUMBER	QTY
1	WASHER PLATE-STEEL (STYLE A)		2
2	WASHER PLATE-STEEL (STYLE B)		2
3	JOINT BAR-POLYURETHANE COATED		2
4	END POST- CANVAS		1
5	BUSHING-STEEL CORE, FILAMENT WD.		12
6	1" DIA. O.N. TRACK BOLT X 7" LG.	GTS-1319/4	6
7	SPRING WASHER FOR 1" DIA. BOLT	GTS-1301	6
8	SQ. NUT 1"		6
130 LB. R.E.HF-B. RAIL			
NEW COMPLETE JOINT KIT (ITEMS 1-10) LISTED BELOW.			
ITEM NO.	DESCRIPTION	PLAN NUMBER	QTY
1	STEEL WASHER PLATE 1 1/4" (STYLE A)		2
2	STEEL WASHER PLATE 1 1/4" (STYLE B)		2
3	JOINT BAR - POLYURETHANE COATED		2
4	END POST 3/4" - CANVAS		1
5	BUSHING-STEEL CORE, FILAMENT WD.		12
6	1/2" DIA. O.N. TRACK BOLT X 7" LG.	GTS-1320/9	6
7	SPRING WASHER FOR 1/2" DIA. BOLT	GTS-1301	6
8	SQ. NUT 1/2"		6
132 LB. R.E. RAIL			
NEW COMPLETE JOINT KIT (ITEMS 1-8) LISTED BELOW.			
ITEM NO.	DESCRIPTION	PLAN NUMBER	QTY
1	WASHER PLATE-STEEL (STYLE A)		2
2	WASHER PLATE-STEEL (STYLE B)		2
3	JOINT BAR-POLYURETHANE COATED		2
4	END POST- CANVAS		1
5	BUSHING-STEEL CORE, FILAMENT WD.		12
6	1/2" DIA. O.N. TRACK BOLT X 7 1/2" LG.	GTS-1320/10	6
7	SPRING WASHER FOR 1/2" DIA. BOLT	GTS-1301	6
8	SQ. NUT 1/2"		6
136 LB R.E. RAIL			
NEW COMPLETE JOINT KIT (ITEMS 1-8) LISTED BELOW.			
ITEM NO.	DESCRIPTION	PLAN NUMBER	QTY
1	WASHER PLATE-STEEL (STYLE A)		2
2	WASHER PLATE-STEEL (STYLE B)		2
3	JOINT BAR-POLYURETHANE COATED		2
4	END POST- CANVAS		1
5	BUSHING-STEEL CORE, FILAMENT WD.		12
6	1/2" DIA. O.N. TRACK BOLT X 7 1/2" LG.	GTS-1320/10	6
7	SPRING WASHER FOR 1-1/8" DIA. BOLT	GTS-1301	6
8	SQ. NUT 1/2"		6



* NOTE:
THE FOUR TIES MARKED *
UNDER THE JOINT BARS
SHALL BE HARDWOOD TIES.
ON HEAVY TRAFFIC LINES THESE
FOUR TIES SHALL BE 8'-6" LONG.

ALL JOINTS TO HAVE BOLTS MOUNTED
HEAD-NUT-HEAD-NUT CONSECUTIVELY
AS ILLUSTRATED.

STANDARD TIE PLATES
NOTE:
IF TIE PLATE IS WITHIN 2" OF
END POST USE INSULATED TIE
PLATE SHOWN ON GTS-0518

TIE SPACING NON-CONTINUOUS INSULATED JOINT (END POST BETWEEN TIES)

NOTES:

- INSULATED RAIL JOINT TO BE INSTALLED IN ACCORDANCE WITH
RM NO 3602, LATEST ISSUE.

METRIC CONVERSION: 1 inch=25.4mm, 1 foot=304.8mm

1	18/07/27	ADDED IMPERIAL TO METRIC CONVERSION NOTE	
No.	Date	Revision	By Approved

Standard / **NON-CONTINUOUS - HEAVY DUTY
INSULATED RAIL JOINTS
JOINT ASSEMBLY - TIE SPACING**

Drawn **GEK** Checked **GWM** Approved **VP Engineering & Asset Management**



Date **SEPT 15/2017** Plan Number **GTS-1207** Rev **1**