

LABEL FORMAT

A NARSTCO USA

B A2150 1 OF 2

- 1. BATCH NO. FOR QUALITY ASSURANCE IDENTIFICATION
- 2. SEQUENTIAL NUMBER IN BATCH

C H12IE55 GR

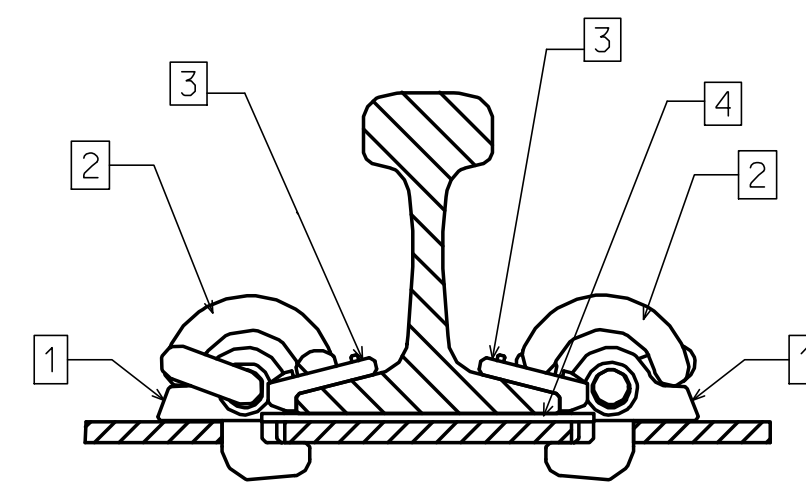
- 1. TIE AND RAIL IDENTIFICATION

D MAY 2017

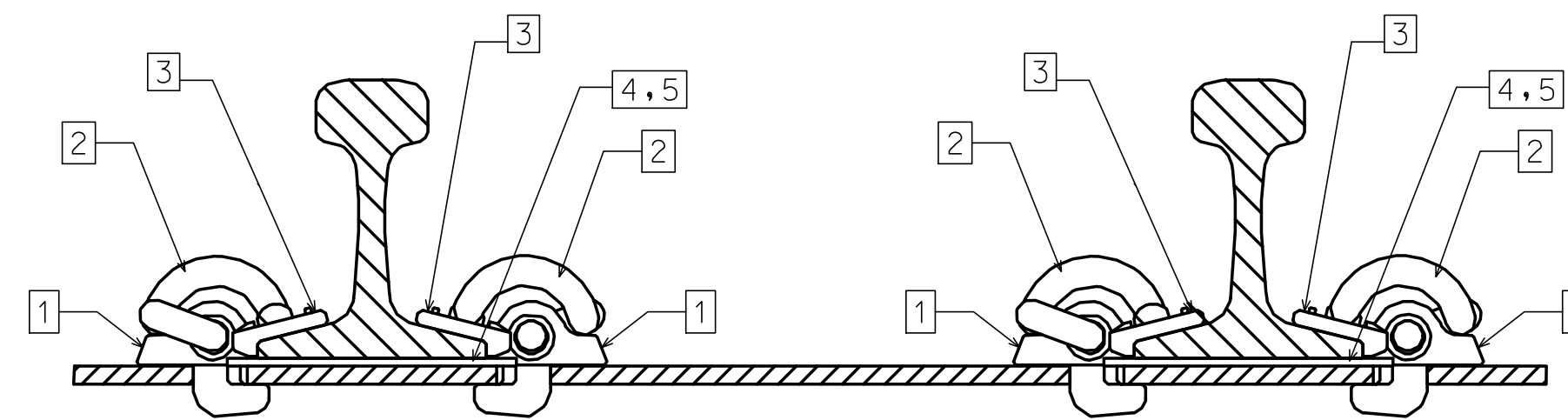
- 1. MONTH PRODUCED
- 2. YEAR PRODUCED

NOTE

- LABELS A, B & D AFFIXED TO TOP OF TIE 1. LABEL C AFFIXED TO TIES 1 THRU 6.
- TO AVOID VARIANCE IN RAIL GAUGE DUE TO RAIL HEAD TO BASE ECCENTRICITY, ENSURE THAT THE RAIL BRAND OF ALL RAILS FACES IN THE SAME DIRECTION.
- TIES WILL BE PUNCHED FOR 7/8" DIA. INSPECTION HOLES. LOCATION VARIES WITH RAIL POSITION.

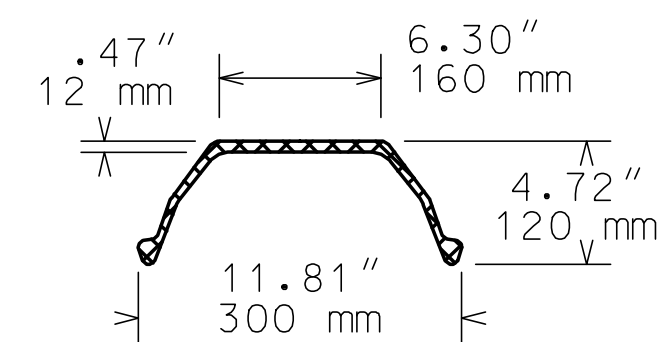


INSULATED RAIL ASSEMBLY



DUAL INSULATED RAIL ASSEMBLY

H12 SECTION



SECTION PROPERTIES
 WEIGHT OF BAR: 35.3 kg/m
 YIELD STRENGTH: 345 MPa (min)
 SECTION MODULII: Z TOP = $175^3 \times 10^3$ mm
 : Z BOT = $88.4^3 \times 10^3$ mm

No.	TURNOUT COMPONENTS	PART No.	QTY
1	NARSTCO HOOK-IN SHOULDER	4030	48
2	'e' CLIP ('e' TYPE CLIP)	'e' CLIP	48
3	HEAVY DUTY RAIL INSULATOR	HD-10	48
4	NARSTCO INSULATING PAD 5 1/2"	3025	22
5	OFFSET INSULATING PAD 5 1/2"	3020	2

METRIC CONVERSION: 1 inch=25.4mm, 1 foot=304.8mm

0	18/08/31	REVISED PDF VERSION ESTABLISHED	
No.	Date	Revision	By Approved

Standard / H12 GUARD RAIL TIES
 INSTALLED 115LB RE RUNNING
 AND GUARD RAIL. 1:40 CANT

Drawn MG Checked GGS Approved *[Signature]*
 VP Engineering & Asset Management



METROLINX

Date AUG 31, 2017 Plan Number GTS-2105 Rev 0

REFERENCE: TS-2621 Sheet 1 OF 1