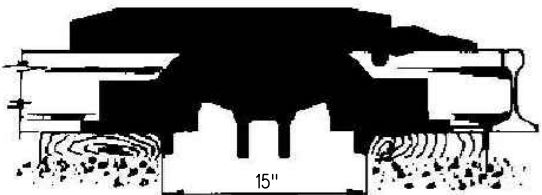


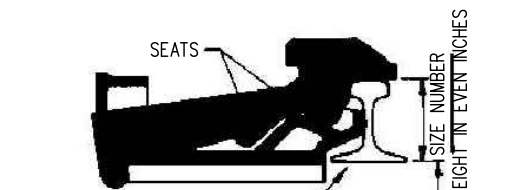
PUTTING THE DERAIL IN TRACK

SUBSTITUTE THE TWO EXISTING 8' LONG TRACK TIES AT DESIRED DERAIL LOCATION BY TWO 16' LONG SWITCH TIES. TIE PLATES MUST NOT BE USED AT DERAIL LOCATION. ON 115 LB. RAIL INSTALLATIONS, TWO SHIMS (ITEM 2) ARE PROVIDED TO RAISE THE DERAIL BOX TO SUIT THE TOP OF RAIL. THESE SHIMS ARE TO BE PLACED BEFORE LAYING DERAIL IN PLACE.



LAY THE DERAIL IN PLACE

THE DERAIL GUIDE BOX (BLACK) IS PROVIDED WITH VERTICAL AND HORIZONTAL FLANGES ADAPTED TO BEAR AGAINST THE SIDES AND TOPS OF THE TIES. THESE PARTS OF THE TIES SHOULD BE SURFACED TO GIVE A GOOD BEARING FOR EACH OF THE FLANGES OF THE GUIDE BOX. THE HORIZONTAL FLANGES HAVE 12 SLOTS OR HOLES FOR LAG SCREWS, OR SPIKES. EIGHT OF THESE OPENINGS SHOULD BE USED SO THAT THE DERAIL MAY BE FIRMLY FIXED TO THE TIES. THE TIES SHOULD BE SPACED 15" APART SO THAT THE VERTICAL FLANGES WILL BEAR AGAINST THEM.



TIE PLATES MUST NOT BE USED. SHOVE THE FRONT OF THE GUIDE BOX AGAINST THE WEB OF THE RAIL AND FASTEN THE GUIDE BOX DOWN TO THE TIES.

THE HEEL END OF THE DERAIL BLOCK (SHADED) WHEN ON THE RAIL MUST FULLY COVER THE HEAD OF THE RAIL TO ENSURE DERAILING. THE DERAIL BLOCK MUST BE HELD IN THAT POSITION BY THE SEATS IN THE GUIDE BOX.

THE DERAIL BLOCK WILL JUST DROP NEATLY ONTO THE TOP OF THE RAIL AT THE END OF THE FORWARD STROKE IF THE DERAIL HAS BEEN CORRECTLY PLACED.

IF THE DERAIL BLOCK DOES NOT FIT THE RAIL HEAD, THE POSITION OF THE GUIDE BOX WITH REFERENCE TO THE RAIL SHOULD BE ADJUSTED. CHECK THAT THE SURFACE ON WHICH THE DERAIL IS SECURED IS THE REQUIRED DISTANCE BELOW THE TOP OF RAIL; OR THE FRONT OF THE GUIDE BOX IS AGAINST THE WEB OF THE RAIL. SEE HB DERAIL INSTALLED IN TRACK WRONG.

DERAILS INSTALLED WRONG:



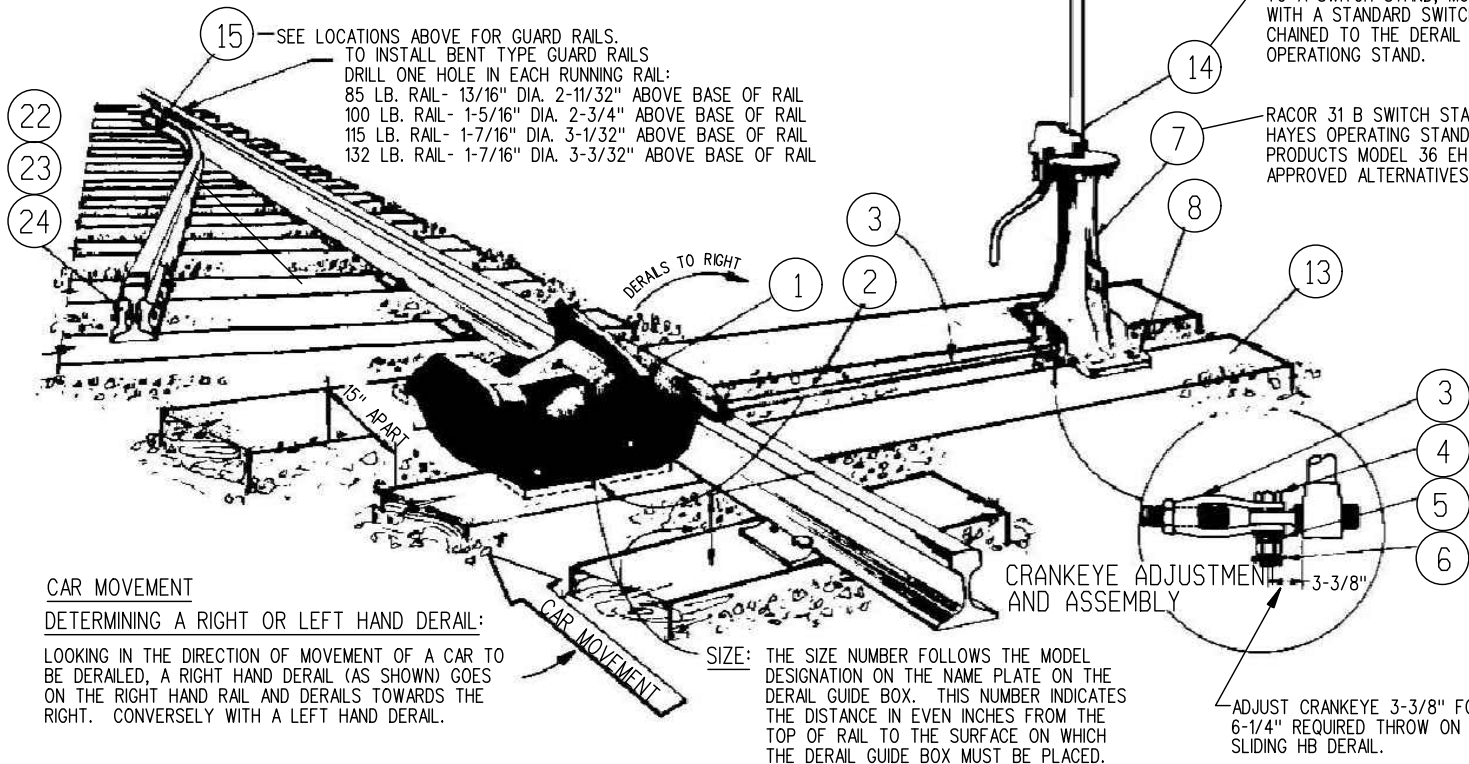
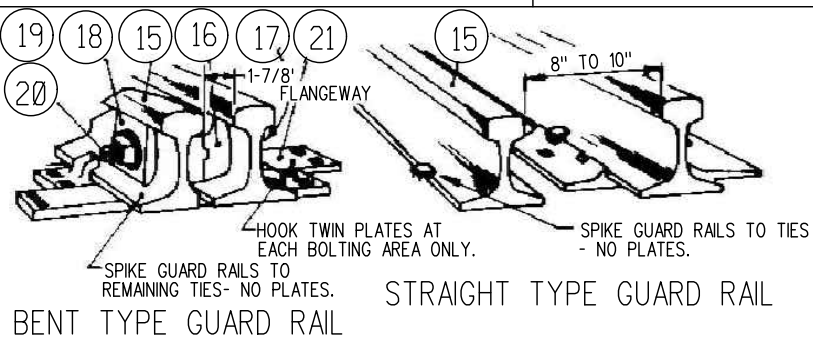
MODEL HB SIZE 6 ON 85 LB. RAIL (5-1/8" HIGH) HERE A SIZE 6 HAS BEEN INSTALLED ON 85 LB. RAIL (5-1/8" HIGH).

IN THIS CASE THE THRUST SHAFTS RESTING ON THE SEATS IN THE GUIDE BOX PREVENT THE DERAIL FROM COMING DOWN ON TOP OF THE RAIL. IF A WHEEL ENCOUNTERED A DERAIL INSTALLED IN THIS MANNER THE BLOCK WOULD PROBABLY BE BROKEN.

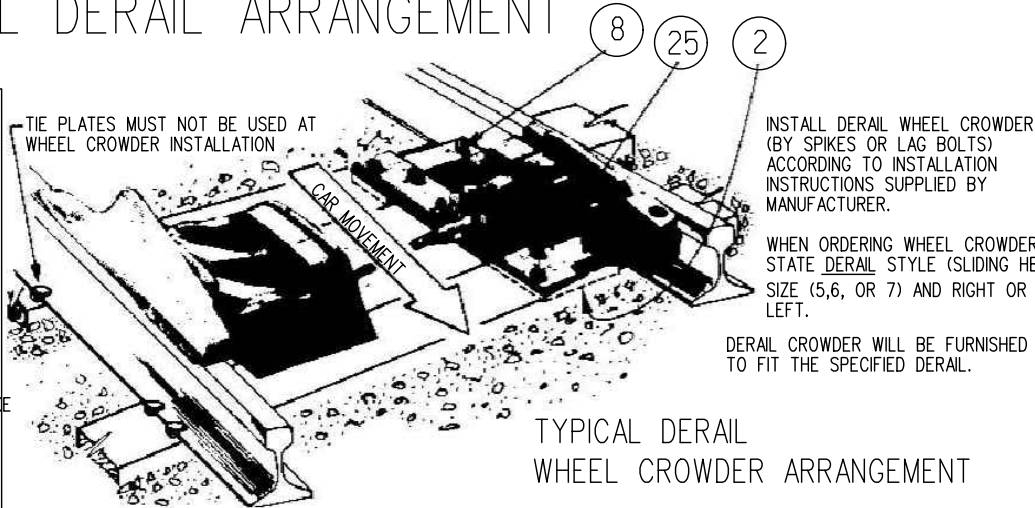


MODEL HB SIZE 6 ON 115 LB. RAIL (6-5/8" HIGH)

THIS SHOWS THE RESULT OF TRYING TO INSTALL A SIZE 6 DERAIL ON A RAIL 6-5/8" HIGH WITHOUT PROPERLY RAISING THE GUIDE BOX 5/8" SO AS TO MAKE THE SURFACE ON WHICH THE DERAIL IS SECURED 6" BELOW THE TOP OF THE RAIL. HERE THE DERAIL BLOCK CANNOT COMPLETE ITS STROKE ONTO THE RAIL. THE HOLDING DOWN PIN ON THE DERAIL BLOCK BEARS ON THE UNDERSIDE OF THE HOLDING DOWN SHELF ON THE GUIDE BOX AND THE BEARING OF THE DERAIL ON TOP OF THE RAIL LIFTS THE THRUST SHAFT OFF OF THE FRONT SEATS IN THE GUIDE BOX.



TYPICAL DERAIL ARRANGEMENT



TYPICAL DERAIL WHEEL CROWDER ARRANGEMENT

- EXEMPTION DERAIL - SEE SHEET 2
- SLIDING DERAILS NOT EQUIPPED WITH HIGH STAND MUST HAVE A SEPARATE STANDARD DERAIL SIGN AS SHOWN IN TS-2208.
- NO "TARGET" OF ANY TYPE IS PERMITTED NOR "TARGET TIPS" ALLOWED.
- DERAILS, EXCEPT THOSE PIPE CONNECTED TO A SWITCH STAND, MUST BE EQUIPPED WITH A STANDARD SWITCH LOCK WHICH IS CHAINED TO THE DERAIL ON THE DERAIL OPERATING STAND.
- RACOR 31 B SWITCH STAND (SHOWN). HAYES OPERATING STAND AND ABC RAIL PRODUCTS MODEL 36 EH ARE APPROVED ALTERNATIVES.

NOTES:

1. WHEN A DERAIL IS INSTALLED OR REMOVED THE PROPER OPERATIONS OFFICER MUST BE ADVISED IMMEDIATELY.
2. THE INSTALLATION OF A SLIDING TYPE DERAIL, WITH ACCESSORIES, TO BE IN ACCORDANCE WITH THIS PLAN AND THE LATEST ISSUE OF RM-3603.
3. FOR OTHER STYLE DERAILS SEE PLAN TS-2210- HINGE TYPE. TS-2210- SWITCH POINT TYPE.
4. THE DIVISION ENGINEER WILL SPECIFY AT EACH DERAIL INSTALLATION THE:
 - (A) TYPE OF DERAIL
 - (B) LOCATION OF DERAIL, AND
 - (C) ACCESSORIES REQUIRED AT DERAIL.
5. THE LOCATIONS OF DERAILS AS SHOWN ON THIS PLAN ARE GENERAL & FINAL LOCATION TO BE DETERMINED BY CHARACTERISTICS AT EACH INDIVIDUAL SITE. FINAL LOCATION TO GIVE MOST ADVANTAGEOUS WORKING EFFECT TO DERAIL, FOR COMPLETE PROTECTION OF TRACK.
6. IN SIGNALLED TERRITORY THE EFFECTIVE INSULATED JOINT MUST BE LOCATED BETWEEN THE DERAIL AND THE CLEARANCE POINT AND NOT MORE THAN (4) FOUR FEET FROM THE DERAIL.
7. ALL DERAILS, WHEEL CROWDERS AND SWITCH STAND HANDLES AS STATED ON DERAIL PLANS MUST BE PAINTED YELLOW AND PERIODICALLY REPAINTED SO THAT COLOUR INDICATIONS SHOW CLEARLY.

METRIC CONVERSION: 1 inch=25.4mm, 1 foot=304.8mm

1	18/07/27	ADDED IMPERIAL TO METRIC CONVERSION NOTE	
No.	Date	Revision	By Approved

Standard/ **INSTALLATION DETAILS**
SLIDING DERAIL
HAYES HB STYLE FOR 85, 100, 115,
132 & 136 LB. RAIL

Drawn GGS Checked GWM Approved VP Engineering & Asset Management



Date SEPT 15/2017 Plan Number GTS-2209 Rev 1

REFERENCE: TS-2209_R6 Sheet 1 OF 2