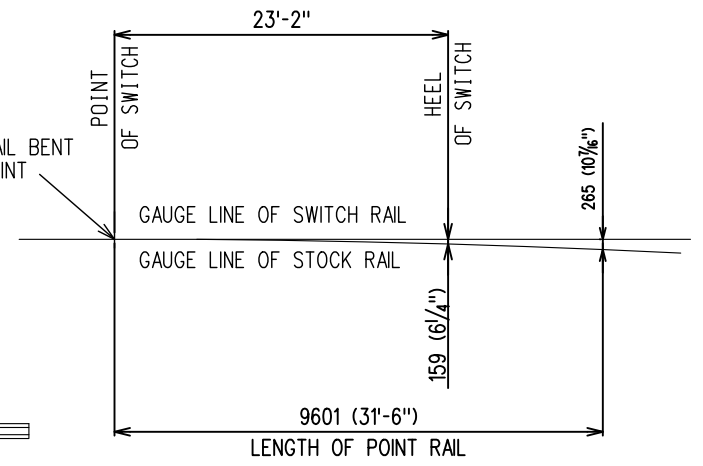
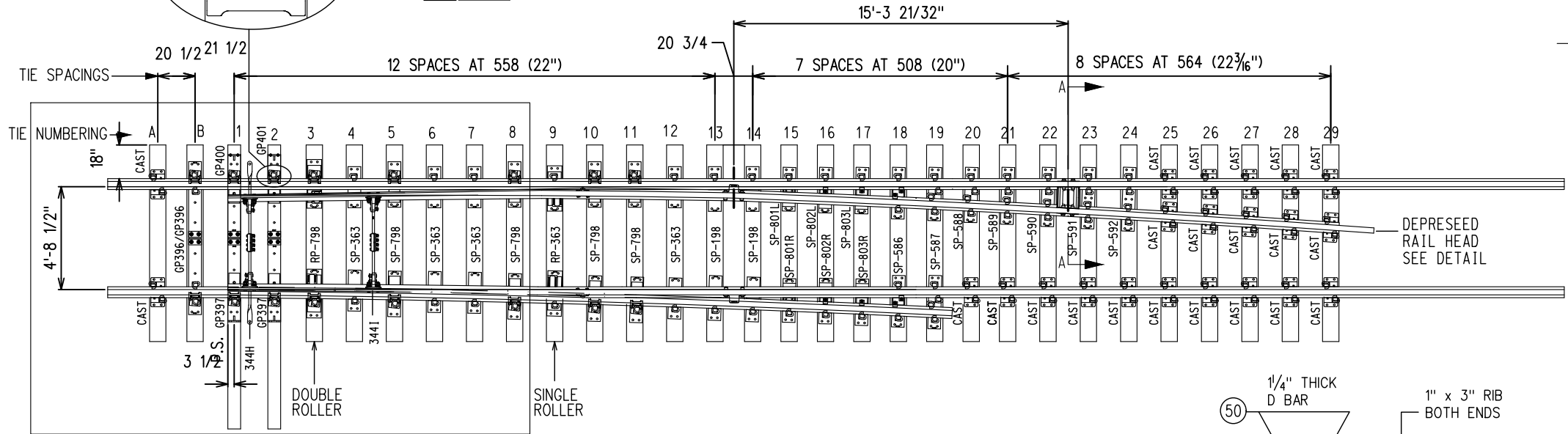
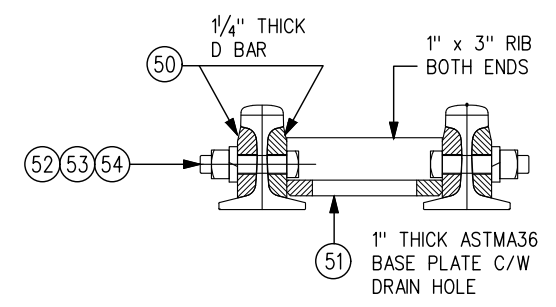


TIES #1 & #2 TO BE ORIENTED AS SHOWN



NOTES:

1. PLATES ARE NOT IDENTIFIED BY ITEM BUBBLES FOR CLARITY.
2. SWITCH POINT ON THE MACHINE/STAND SIDE TO BE CLOSED, BANDED & SECURED FOR SHIPPING; OPEN SWITCH POINT TO BE BLOCKED AND SECURED FOR SHIPPING.
3. SINGLE SWITCH POINT PLATE ROLLERS TO BE INSTALLED ON TIE #9, DOUBLE ON #3.
4. DERAILER TO BE INSTALLED AND MAINTAINED IN ACCORDANCE WITH THE LATEST ISSUE OF THE ENGINEERING TRACK STANDARDS.
5. DERAILER GEOMETRY, FOR TABLES OF DIMENSIONS AND OFFSETS SEE GTS-0002 NO. 10 ALL WELDED TURNOUTS.
6. FOR SWITCH ASSEMBLY DETAILS SEE GO STD GTS-0267
7. L - LEFT HAND DERAILER XX - XX - XXX
R - RIGHT HAND DERAILER XX - XX - XXX
8. RAIL ENDS TO BE BEVELLED IF NOT OTHERWISE INDICATED.



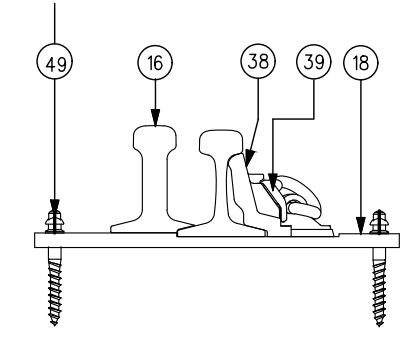
SWITCH ASSEMBLY SECTION "A-A"

DERAIL DATA:

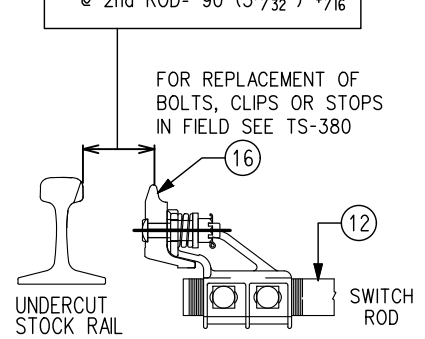
LENGTH OF POINT:	23'-2" ON 31'-6"
HEEL SPREAD OF SWITCH:	6 1/4"
SWITCH ANGLE:	0° 27' 58"
CENTERLINE RADIUS:	807.20'
THROW AT #1 ROD:	4 3/4"

ALL TIE SCREW HOLES TO BE DRILLED 17MM (2 1/32") DIA. x MIN. 127MM (5") DEEP

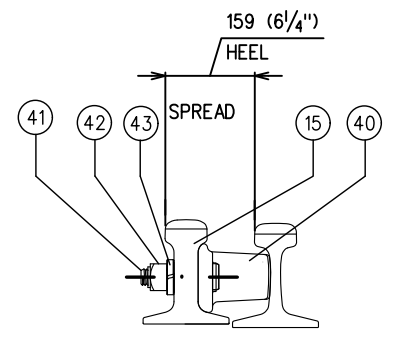
SWITCH POINT THROWS
 @ 1st ROD= 121 (4-3 3/4") + 1/16"
 @ 2nd ROD= 90 (3 7/32") + 1/16"



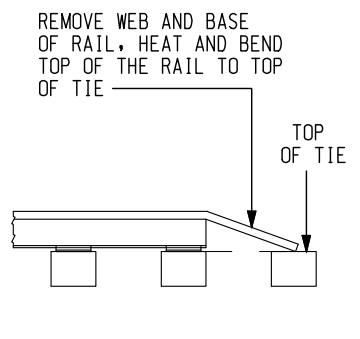
ADJUSTABLE RAIL BRACE ASSEMBLY



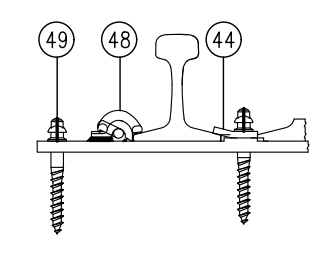
ROCKER CLIP ASSEMBLY



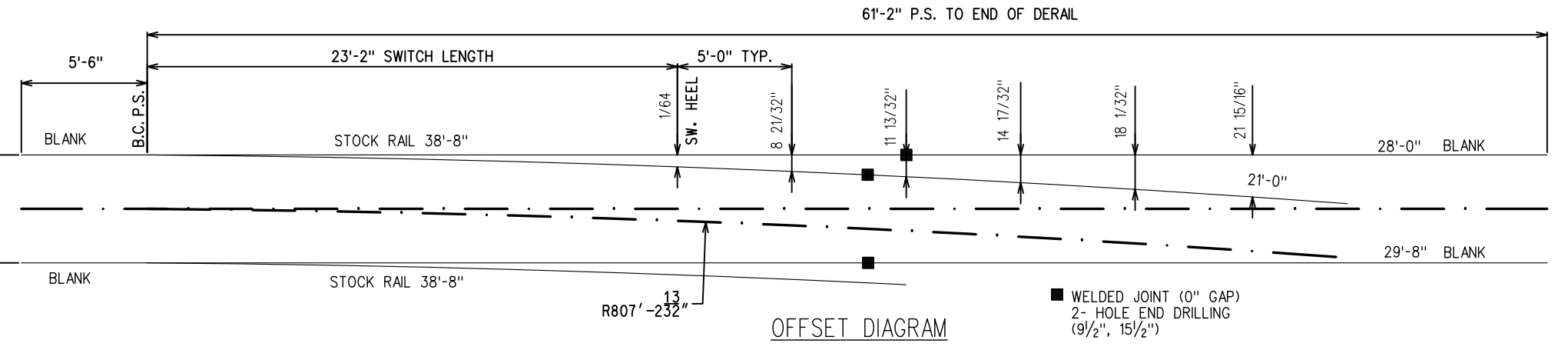
HEEL BLOCK ASSEMBLY



DEPRESSED RAIL HEAD DETAIL



HOLD-DOWN CLIP ASSEMBLY



OFFSET DIAGRAM

METRIC CONVERSION: 1 inch=25.4mm, 1 foot=304.8mm

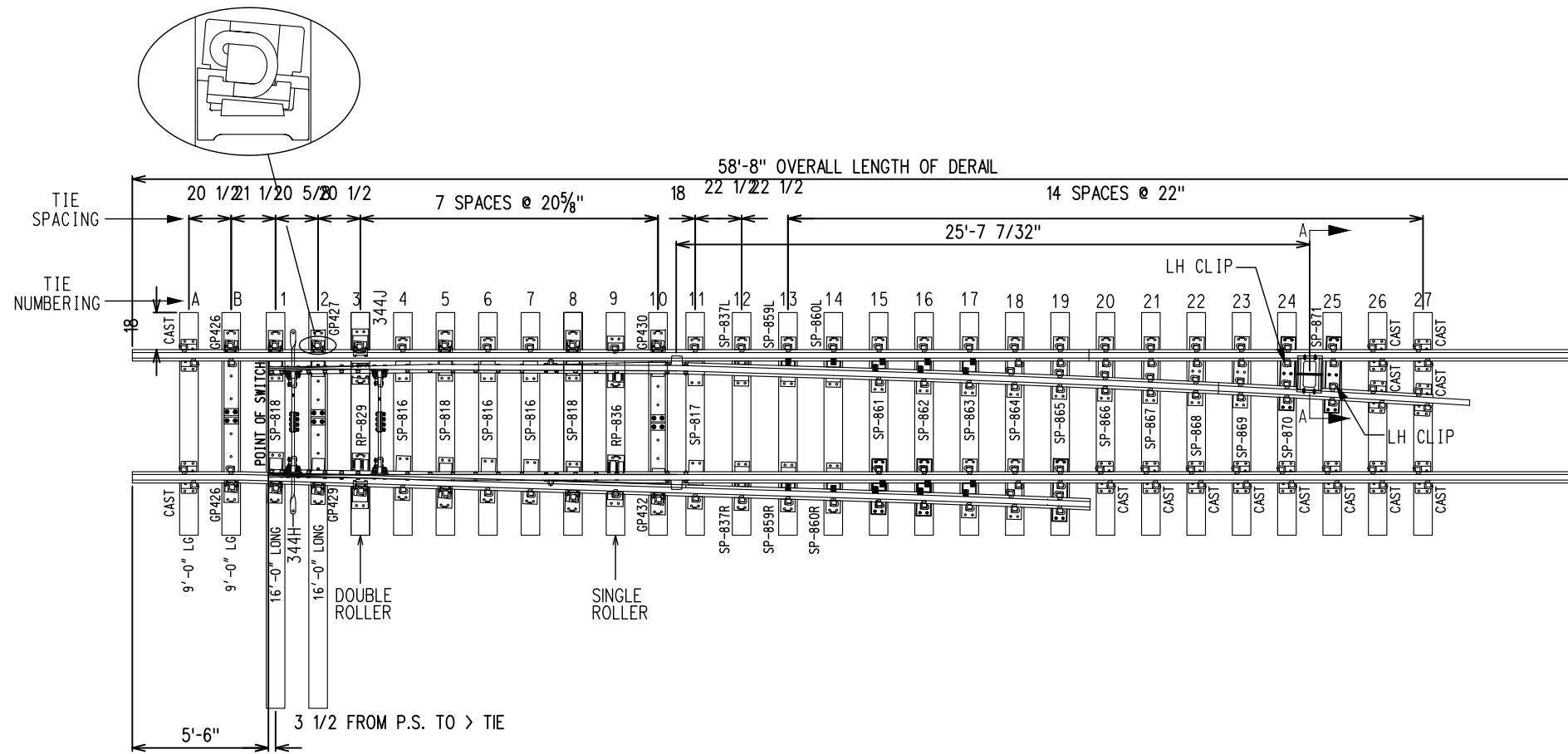
No.	Date	Revision	By Approved
1	18/07/27	ADDED IMPERIAL TO METRIC CONVERSION NOTE	

Standard DERAIL. DBL SWITCH POINT-136 LB. RAIL 23'2"/31'6" SAMSON PT. POWER SWITCH UNIFORM RISER DESIGN -WOOD TIES

Drawn MK Checked AJL Approved V.F. Engineering & Asset Management



Date 18/07/27 Plan Number GTS-2210 Rev 1



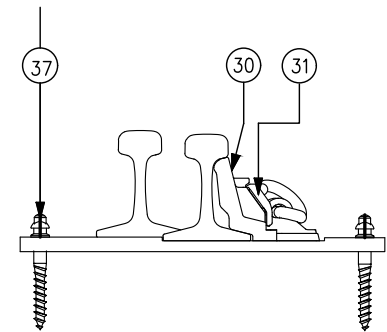
NOTES:

1. PLATES ARE NOT IDENTIFIED BY ITEM BUBBLES FOR CLARITY.
2. SWITCH POINT ON THE MACHINE/STAND SIDE TO BE CLOSED, BANDED & SECURED FOR SHIPPING; OPEN SWITCH POINT TO BE BLOCKED AND SECURED FOR SHIPPING.
3. SINGLE SWITCH POINT PLATE ROLLERS TO BE INSTALLED ON TIE #9, DOUBLE ON #3.
4. DERAILER TO BE INSTALLED AND MAINTAINED IN ACCORDANCE WITH THE LATEST ISSUE OF THE ENGINEERING TRACK STANDARDS.
5. DERAILER GEOMETRY, FOR TABLES OF DIMENSIONS AND OFFSETS SEE GTS-0002 NO. 10 TURNOUTS.
6. FOR SWITCH ASSEMBLY DETAILS SEE GO STD GTS-0017
7. L - LEFT HAND DERAILER XX - XX - XXX
R - RIGHT HAND DERAILER XX - XX - XXX
8. RAIL ENDS TO BE BEVELLED IF NOT OTHERWISE INDICATED.

DERAIL DATA:

LENGTH OF POINT:	16'-6" ON 38'-5"
HEEL SPREAD OF SWITCH:	6 1/4"
SWITCH ANGLE:	1°42' 01"
CENTERLINE RADIUS:	740.791'
THROW AT #1 ROD:	4 3/4"

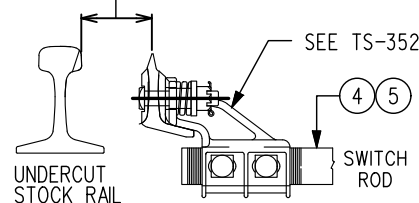
ALL TIE SCREW HOLES TO BE DRILLED
17MM (2 1/32") DIA. x MIN. 127MM (5") DEEP



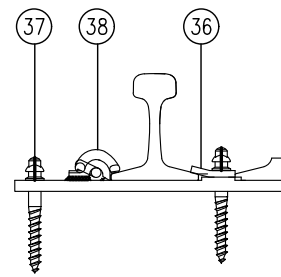
ADJUSTABLE RAIL BRACE
ASSEMBLY

SWITCH POINT THROWS

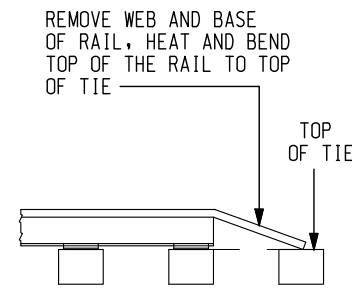
- @ 1st ROD= 121 (4-3/4") +/- 1/16"
- @ 2nd ROD= 94 (3 11/16") +/- 1/16"



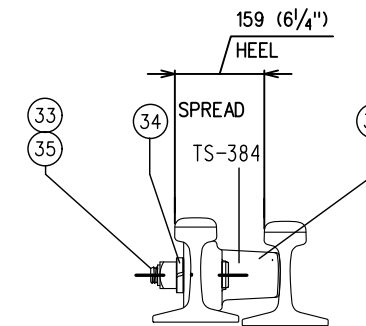
ROCKER CLIP
ASSEMBLY



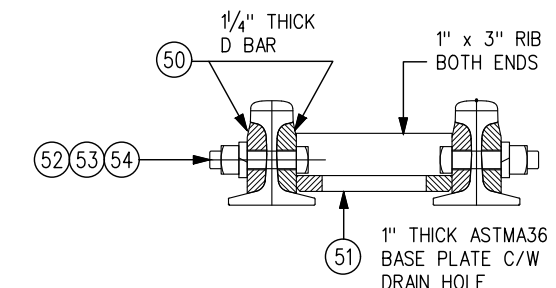
HOLD-DOWN CLIP
ASSEMBLY



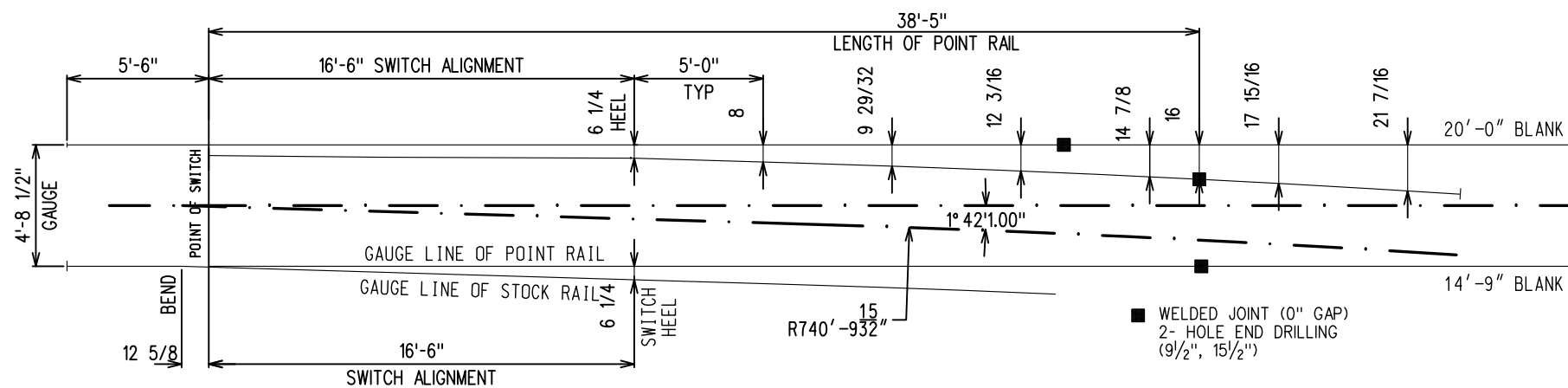
DEPRESSED RAIL HEAD
DETAIL



HEEL BLOCK
ASSEMBLY



SWITCH ASSEMBLY
SECTION "A-A"



METRIC CONVERSION: 1 inch=25.4mm, 1 foot=304.8mm

No.	Date	Revision	By Approved
1	18/07/27	ADDED IMPERIAL TO METRIC CONVERSION NOTE	

Standard DERAIL. DBL SWITCH POINT-115 LB.
RAIL 16'6"/31'6" SAMSON PT.
MAN. OPER. SWIT SWITCH
UNIFORM RISER DESIGN-WOOD TIES

Drawn MK Checked AJL Approved VPF Engineering & Asset Management



Date SEPT 15/2017 Plan Number GTS-2210 Rev 1