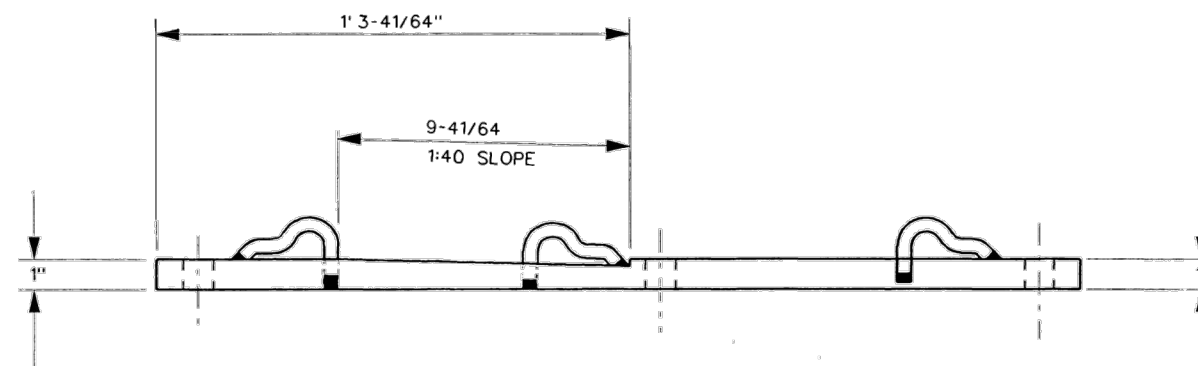


STOCK NUMBER		ITEM NO.	DESCRIPTION	STANDARD PLAN NO.	MARK NO.	QTY.
NEW	PART WORN					
		1	BRIDGE GUARD RAIL PLATE	-----	BP-4	1
		2	PANDROL TOEPLATE	-----	2	2
		3	PANDROL CLIP - TYPE PR631A	GTS-1322	-----	1
		4	PANDROL CLIP - TYPE PR633	GTS-1322	-----	2
		5	RAIL CLIP	GTS-1335B	1335 B	1
		6	TIE SCREW - Ss5	GTS-1315	Ss5	5
		7	DOUBLE SPRING WASHER	GTS-1310	-----	5
		8	INSULATOR, DELRIN BLACK	GTS-1323	-----	2
		9	RAIL PAD "4D"	GTS-0519	-----	1

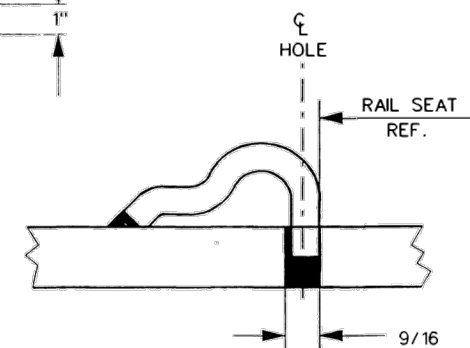
- NOTES :**
1. IDENTIFICATION CHARACTERS (1/2" MINIMUM HEIGHT) TO BE STAMPED ON EACH PLATE AS SHOWN.
  2. UNLESS OTHERWISE SHOWN, ALL DIMENSIONS ARE IN INCHES.
  3. UNLESS OTHERWISE SPECIFIED, ALL TOLERANCES TO BE  $\pm 1/32$ ".
  4. THE USE OF ACETYLENE TORCH OR OTHER BURNING METHOD FOR THE CUTTING OF HOLES IS ABSOLUTELY PROHIBITED.

**MATERIAL :** PLATES TO CONFORM TO THE LATEST REVISION OF GO TRANSIT TRACK STANDARDS OR IN GENERAL WITH LATEST REVISION OF A.S.T.M. SPECIFICATION FOR COMMERCIAL QUALITY HOT ROLLED BAR STEEL A-675 CHEMICAL REQUIREMENT.

	MINIMUM	MAXIMUM
CARBON	0.15 %	0.25 %
MANGANESE	0.30 %	0.60 %
PHOSPHORUS		0.04 %
SULPHUR		0.05 %



BRIDGE GUARD RAIL PLATE  
BP-4



TYPICAL PANDROL SHOULDER  
INSTALLATION

0	17/12/15	REVISED PDF VERSION ESTABLISHED	
No.	Date	Revision	By Approved
Standard		MACHINING / ASSEMBLY <b>BRIDGE GUARD RAIL PLATE</b> FOR 136 LB.RAILS ( PANOROL FASTENINGS)	
Drawn	MG	Checked	GGG
Approved		KBLU VP Corridor Infrastructure	
Date	DEC 15, 2017	Plan Number	GTS-0690
Rev		0	
REFERENCE: TS-690			Sheet 1 OF 1



**METROLINX**